

## Acorn Woodstoves

Part #	HP	Spd/RPM	Volts	Amps	Rot	Type	Dia	Body	Shaft	Comment	Fig
<b>R250</b>	<b>1/65</b>	2/1550	115	0.50	CCW	SP	3.3"	3.7"	Hubless	605850M0	1

## Addison-Comfortaire

Part #	HP	Spd/RPM	Volts	Amps	Rot	Type	Dia	Body	Shaft	Comment	Fig
<b>R22442</b>	<b>1/4</b>	2/1075	208/230	1.30	R.P.	5/370	5.5"	4.3"	6.0" x 1/2"	Cond. Fan	2
<b>R22187</b>	<b>1/2</b>	1/1075	208/230	2.80	R.P.	10/370	5.5"	5.2"	6.0" x 1/2"	Cond. Fan	2
<b>R22016</b>	<b>1/2</b>	2/1075	208/230	2.80	R.P.	10/370	5.5"	5.2"	6.0" x 1/2"	Cond. Fan	2
<b>R32716</b>	<b>1/2</b>	2/1075	460	2.00	REV.	10/370	5.5"	5.5"	6.4" x 1/2"	Cond. Fan	2

## Air 2000

Part #	HP	Spd/RPM	Volts	Amps	Rot	Type	Dia	Body	Shaft	Comment	Fig
<b>R316</b>	<b>1/20</b>	1550	115	1.40	CCW	SP	3.3"	2.7"	-	HRV Motor	3

## Airdex

Part #	HP	Spd/RPM	Volts	Amps	Rot	Type	Dia	Body	Shaft	Comment	Fig
<b>RB245</b>	<b>1/25</b>	1550	115	1.50	CCW	SP	3.3"	9.2"	-	AMV245	4

## Air King

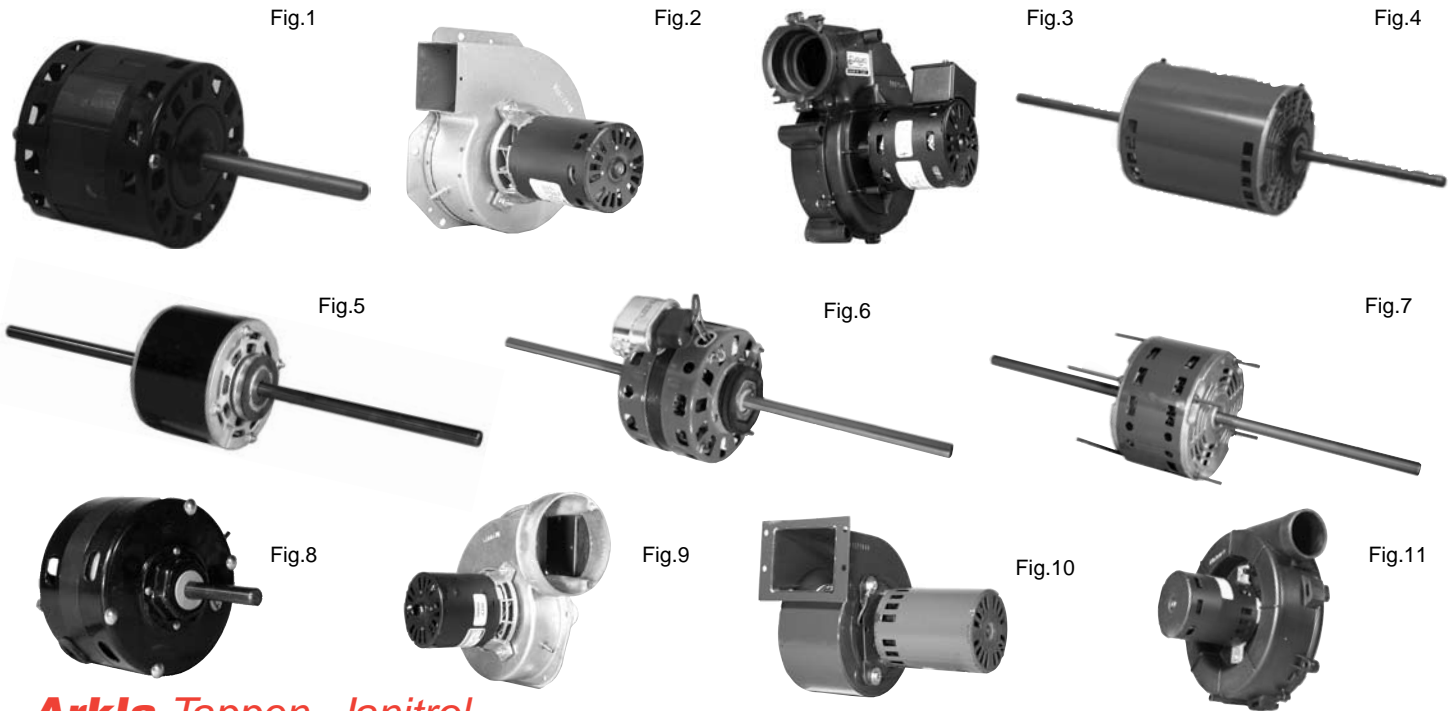
Part #	HP	Spd/RPM	Volts	Amps	Rot	Type	Dia	Body	Shaft	Comment	Fig
<b>R503</b>	<b>1/130</b>	1/1550	115	0.40	CW	S.P.	3.3"	1.90"	2.4"x1/4"	2108375001	5
<b>R603</b>	<b>1/125</b>	1/3000	115	0.58	CW	S.P.	Skel	0.62"	2.7"x7/32"	2108370033	6
<b>R206</b>	<b>1/80</b>	2/1550	115	0.50	CW	S.P.	3.3"	1.90"	1.5"x1/4"	Vent Fan	5
<b>R222</b>	<b>1/75</b>	1/1550	115	0.70	CCW	S.P.	3.3"	2.00"	1.2"x1/4"	2108375025	5
<b>R415</b>	<b>1/65</b>	1/1550	115	0.78	CCW	S.P.	3.3"	2.90"	2.3"x1/4"x2.3"	2108375034	7
<b>R201</b>	<b>1/50</b>	1/1550	115	0.90	CW	S.P.	3.3"	1.90"	2.2"x1/4"	2108375036	5

## Airtemp

Part #	HP	Spd/RPM	Volts	Amps	Rot	Type	Dia	Body	Shaft	Comment	Fig
<b>R760</b>	<b>1/8</b>	3/1100	115	1.30	CW	PSC/12.5/370	5.5"	3.6"	2.0"x1/2"x2.8"	3525153	8
<b>R22002</b>	<b>1/6</b>	1/1075	208/230	1.30	CW	PSC/4/370	5.5"	3.5"	3.0"x1/2"	3775858	8
<b>R52287</b>	<b>1/3</b>	3/1310	208/230	2.90	CW	PSC/5/370	5.5"	4.5"	2.5"x1/2"x3.0"	Fasco D808	8

Rotation determined opposite shaft end  
Double shaft determined at lead end

Shaft length measured from  
hub face to shaft end



## Arkla Tappen, Janitrol

Part #	HP	Spd/RPM	Volts	Amps	Rot	Type	Dia	Body	Shaft	Comment	Fig
<b>R32317</b>	<b>1/3</b>	1/825	115	4.80	CCW	5/370	5.5"	5.63"	2.5"×1/2"	B14506-393	1
<b>R32237</b>	<b>1/3</b>	1/285	208/230	3.00	CCW	5/370	5.5"	5.80"	2.7"×1/2"	B14506-396	1

## Amana

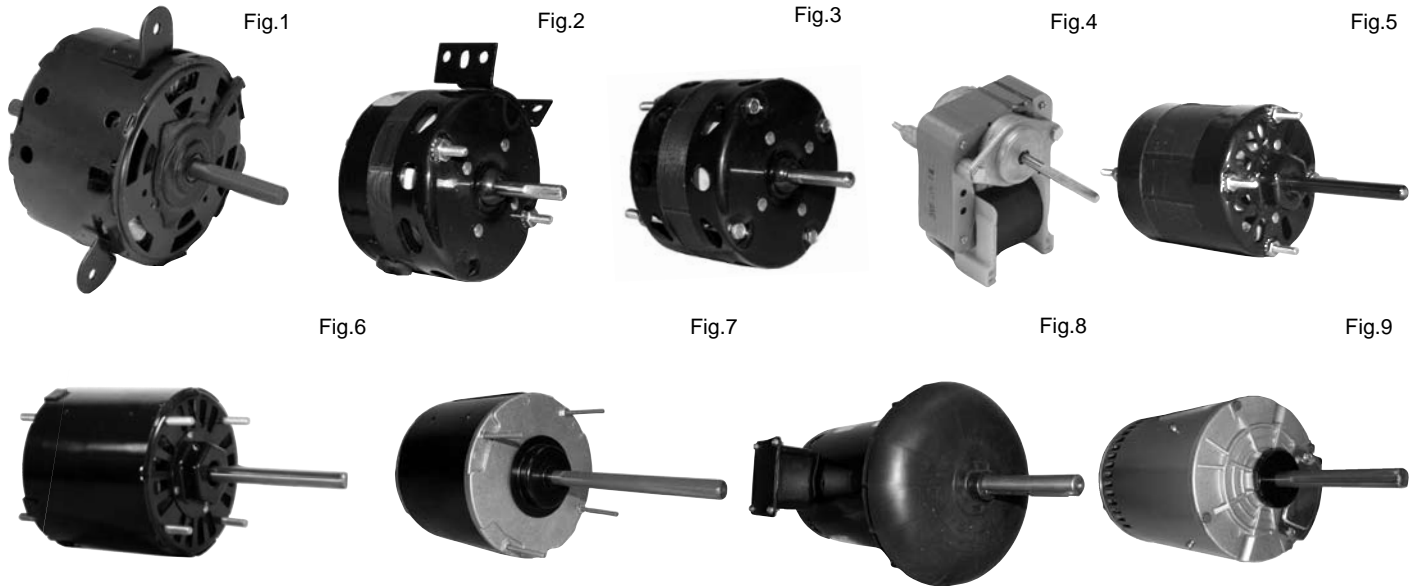
Part #	HP	Spd/RPM	Volts	Amps	Rot	Type	Dia	Body	Shaft	Comment	Fig
<b>RFB160</b>	<b>1/30</b>	1/3000	115	1.60	CCW	SP	3.3"	6.0"	-	D69964-5	2
<b>RFB158</b>	<b>1/25</b>	1/3450	115	0.70	CCW	4/370	3.3"	6.4"	-	D98686-5	3
<b>RFB129</b>	<b>1/20</b>	1/3250	115	1.95	CCW	SP	3.3"	7.0"	-	11009001, c/c gasket	2
<b>R52231</b>	<b>1/2</b>	2/1075	208/230	4.00	REV	7.5/370	5.5"	7.0"	-	Neville RE128	4

## American Air Filter

Part #	HP	Spd/RPM	Volts	Amps	Rot	Type	Dia	Body	Shaft	Comment	Fig
<b>R2675</b>	<b>1/30</b>	4/1075	208/230	0.40	CCW	PSC/inc	4.75"	3.8"	7.7"×1/2"×7.7"	02024224 (evap.)	5
<b>R2375</b>	<b>1/20</b>	1/1000	230	1.00	CW	SP	5.0"	2.9"	2.5"×1/2"	141 (condenser)	8
<b>R2622</b>	<b>1/6 - 1/12</b>	4/1550	115	3.20	Rev.	PSC/inc	5.0"	4.0"	7.40"×1/2"×7.40"	7184-0354	6
<b>R2677</b>	<b>1/5-1/10</b>	3/1625	115	2.80	CCW	PSC/inc	5.5"	3.55"	8.55"×1/2"×8.5"	7124-0103	7

## Armstrong

Part #	HP	Spd/RPM	Volts	Amps	Rot	Type	Dia	Body	Shaft	Comment	Fig
<b>RFB425</b>	<b>1/25</b>	1/3000	115	1.40	CW	SP	3.3"	5.80"	-	40425-002	9
<b>RFB203</b>	<b>1/20</b>	1/3000	208/230	0.90	CCW	SP	3.3"	8.50"	-	2038843000, 203884B002	10
<b>RFB547</b>	<b>1/20</b>	1/3400	115	1.80	CW	SP	3.3"	5.80"	-	40404-003G-004, 40404-004, 2862-513-040, c/w gaskets	11
<b>R2691</b>	<b>1/5</b>	1/1075	208/230	1.50	CW	5/370	5.0"	4.00"	3.9"×1/2"	35035B001	6



## Belding

Part #	HP	Spd/RPM	Volts	Amps	Rot	Type	Dia	Body	Shaft	Comment	Fig
<b>R756</b>	<b>1/12</b>	3/1080	115	1.30	CCW	5/370	5.5"	3.5"	2.0"x1/2"x2.2"	R.A.C M8/M10 Chassis	1
<b>R62160</b>	<b>1/3</b>	3/1365	208/230	2.80	CCW	3/370	5.5"	4.4"	2.9"x1/2"x4.3"	R.A.C.	1

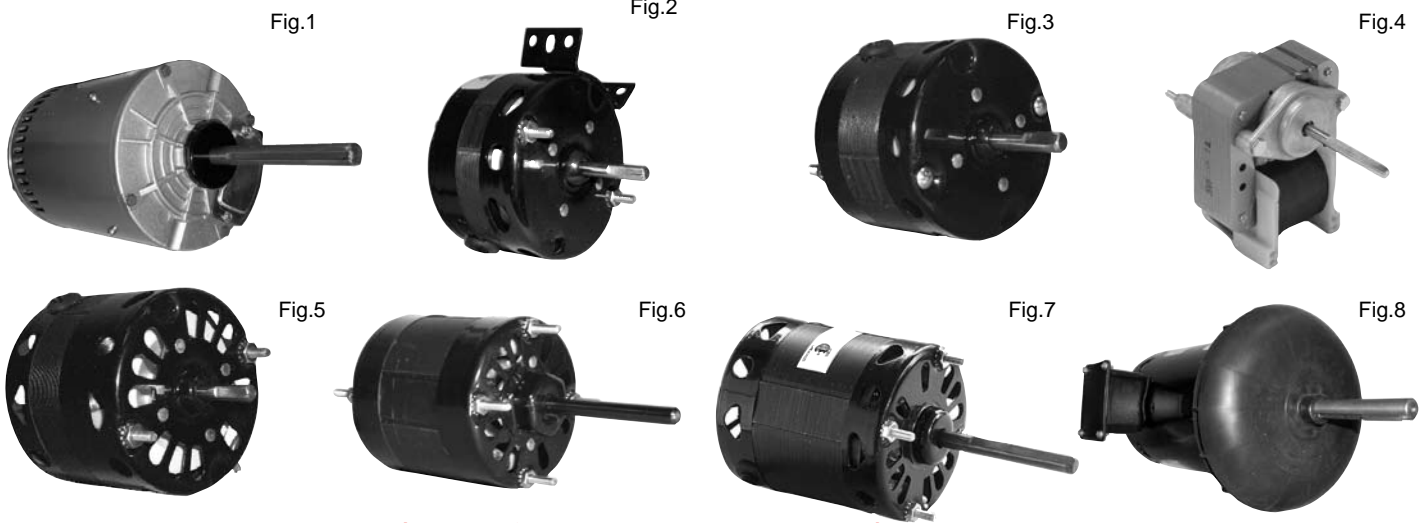
## Blanchard Ness (cont. next page...)

**Also See Bohn**

Part #	HP	Spd/RPM	Volts	Amps	Rot	Type	Dia	Body	Shaft	Comment	Fig
<b>R326</b>	<b>1/125</b>	1/1550	115	0.50	CW	SP	3.3"	1.94"	1.4" x 1/4"	E01001,2,3	2
<b>R511</b>	<b>1/100</b>	1/1350	230	0.28	CW	SP	3.3"	2.10"	2.0"x1/4"	79105,79115	3
<b>R302</b>	<b>1/100</b>	1/1550	230	0.30	CW	SP	3.3"	1.94"	1.3" x 1/4"	E01004	3
<b>R1014</b>	<b>1/65</b>	1/3000	115	0.70	CW	SP	Skel	0.87"	1.25"x0.1811"	E1014, J238-087-8104	4
<b>R605</b>	<b>1/55</b>	1/2800	115	0.90	CW	SP	Skel	0.90"	1.7"x0.1811"	E310131, 79103	4
<b>R130</b>	<b>1/25</b>	1/1550	230	0.80	CW	SP	3.3"	2.72"	1.5"x5/16"	79106, 108, 113	2
<b>R318</b>	<b>1/25</b>	1/1550	115	1.50	CW	SP	3.3"	2.80"	2.8"x5/16"	79105, E1007	2
<b>R358</b>	<b>1/20</b>	1/1550	115	2.00	CCW	SP	3.3"	3.25"	2.8" x 5/16"	E01007,57,58	5
<b>R359</b>	<b>1/20</b>	1/1550	208/230	1.20	CCW	SP	3.3"	3.25"	2.8" x 5/16"	E01059	5
<b>R1052</b>	<b>1/20</b>	1/1550	115	2.00	CCW	SP	3.3"	3.0"	2.8"x 5/16"	E1052	6
<b>R1053</b>	<b>1/20</b>	1/1550	208/230	1.00	CCW	SP	3.3"	3.0"	2.8"x 5/16"	E1053	6
<b>R22445</b>	<b>1/4</b>	1/825	208/230	1.90	Rev	5/370	5.5"	4.90"	6.0"x1/2"	E1026	7
<b>S1502</b>	<b>1/3</b>	1/1075	208/230 /460	2.80	Rev	5/440	5.5"	7.30"	3.5"x1/2"	5015H	8
<b>R22748</b>	<b>1/3</b>	1/1075	208/230	2.60	Rev	5/370	5.5"	4.30"	6.0"x1/2"	E1022, E1025	7
<b>R22745</b>	<b>1/2</b>	1/1075	208/230	4.40	Rev	5/370	5.5"	4.80"	6.0"x1/2"	E1064	7
<b>S1504</b>	<b>1/2</b>	1/1075	208/230 /460	3.20	Rev	7.5/370	5.5"	9.2"	3.5"x1/2"	E1063,64	8
<b>T1532</b>	<b>1/2</b>	1/1140	208/230 /460	3.00	Rev	3 PH	5.5"	9.2"	3.5"x1/2"	Cond. Fan	8
<b>T2532</b>	<b>1/2</b>	3/1140	208/230 /460	2.70	Rev	3 Ph	6.5"	8.1"	5" x 5/8"	E01020, 1066	9
<b>T2533</b>	<b>1/2</b>	3/1140	575	1.00	Rev	3 Ph	6.5"	8.1"	5" x 5/8"	E01021	9
<b>T1536</b>	<b>3/4</b>	1/1140	575	1.50	Rev	3 PH	5.5"	11.0"	4.0"x5/8" KF	E1021,24, E5026,28	8
<b>T1538</b>	<b>1</b>	1/1140	208/230 /460	5.60	Rev	3 PH	5.5"	11.5"	4.0"x5/8" KF	Air Conditioner	8

Rotation determined opposite shaft end  
Double shaft determined at lead end

Shaft length measured from  
hub face to shaft end



## Blanchard Ness (cont. from previous page)

Also See Bohn

Part #	HP	Spd/RPM	Volts	Amps	Rot	Type	Dia	Body	Shaft	Comment	Fig
<b>T2537</b>	<b>1</b>	1/850	208/230	5.30	Rev	3 Ph	6.5"	11.10"	5" x 5/8"	E05026	1
<b>T2537</b>	<b>1</b>	1/850	460	5.30	Rev	3 Ph	6.5"	11.10"	5" x 5/8"	E05028	1
<b>T2539</b>	<b>1</b>	1/850	575	2.10	Rev	3 Ph	6.5"	11.10"	5" x 5/8"	E05027	1
<b>T2544</b>	<b>2</b>	1/1140	208/230 /460	7.20	Rev	3 Ph	6.5"	11.10"	5" x 5/8"	E05033	1
<b>T2536</b>	<b>2</b>	1/1140	575	2.70	CW	3 Ph	6.5"	11.10"	5" x 5/8"	E05034	1

## Bohn

Also See Blanchard

Part #	HP	Spd/RPM	Volts	Amps	Rot	Type	Dia	Body	Shaft	Comment	Fig
<b>R326</b>	<b>1/125</b>	1/1550	115	0.50	CW	SP	3.3"	1.94"	1.4" x 1/4"	79101	2
<b>R511</b>	<b>1/100</b>	1/1350	230	0.35	CW	SP	3.3"	1.70"	2.0" x 1/4"	79105, 79115	3
<b>R605</b>	<b>1/55</b>	1/2800	120	1.0	CW	SP	Skel	0.96"	1.75" x 0.1811"	79103, 79104	4
<b>R306</b>	<b>1/50</b>	1/1550	115	0.65	CW	SP	3.3"	2.92"	1.1" x 1/4"	79102, 79114	5
<b>R130</b>	<b>1/45</b>	1/1550	230	0.80	CW	SP	3.3"	2.70"	1.5" x 5/16"	79106, 79108, 79113, 5001M	2
<b>R332</b>	<b>1/25</b>	1/1550	115	1.50	CW	SP	3.3"	2.69"	1.5" x 5/16"	79107, 112, 5001F, 11S, 20F	3
<b>R318</b>	<b>1/20</b>	1/1550	115	1.60	CW	SP	3.3"	2.75"	2.8" x 5/16"	79105, 5010S	2
<b>R358</b>	<b>1/20</b>	1/1550	115	2.00	CCW	SP	3.3"	3.25"	2.8" x 5/16"	5001L, 8S, 4L	6
<b>R359</b>	<b>1/20</b>	1/1550	208/230	1.20	CCW	SP	3.3"	3.25"	2.8" x 5/16"	5008T, 5034M	6
<b>R313</b>	<b>1/15</b>	1/1550	115	2.10	CCW	SP	3.3"	3.50"	3.0" x 5/16"	5034LS, 5008SS, U-572	7
<b>R314</b>	<b>1/15</b>	1/1550	208/230	1.30	CCW	SP	3.3"	3.50"	3" x 5/16"	5044MS, 5008TS, U-573	7
<b>S1502</b>	<b>1/3</b>	1/1075	200/230 /460	1.40	Rev	5/440	5.5"	7.30"	3.5" x 1/2"	5015H	8
<b>S1504</b>	<b>1/2</b>	1/1075	200/230 /460	4.00	Rev	7.5/440	5.5"	12.20"	3.5" x 1/2"	5002P, 5003P	8
<b>T1532</b>	<b>1/2</b>	1/1140	200/230 /460	1.50	Rev	3 Ph	5.5"	9.20"	3.5" x 1/2"	Condenser Fan	8
<b>T2537</b>	<b>1</b>	1/850	208/230 /460	5.30	Rev	3 Ph	6.5"	11.10"	5" x 5/8"	E5028	1
<b>T2539</b>	<b>1</b>	1/850	575	2.10	Rev	3 Ph	6.5"	11.10"	5" x 5/8"	E5027	1



Fig.1



Fig.2

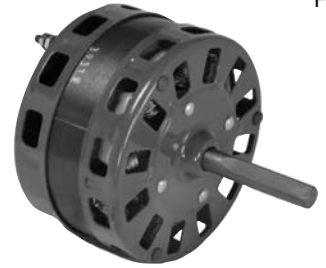


Fig.3



Fig.4



Fig.5



Fig.6



Fig.7

## Broan

Part #	HP	Spd/RPM	Volts	Amps	Rot	Type	Dia	Body	Shaft	Comment	Fig
R611	1/300	1/1500	115	0.55	CW	SP	Skel	0.55"	1.7"x0.181"	3008001, 23303	1
R603	1/125	1/2400	115	0.52	CW	SP	Skel	0.65"	2.2"x7/32"	81058,96, 81795, 81826,27, 81993,94, 82230	1
R601	1/80	1/3000	115	0.70	CW	SP	Skel	0.90"	2.2"x1/4"	30080007,162	1
R322	1/60	1/1550	115	0.80	CW	SP	3.3"	2.00	1.3"x1/4"	30080111,112	2
R610	1/60	2/2400	115	1.00	CW	SP	Skel	0.90"	1.2"x7/32"	30080011,12, 51000, 52000	1
R605	1/55	1/2800	115	0.90	CW	SP	Skel	0.90"	1.7"x0.181"	Vent Fan	1
R467	1/25	1/1550	115	1.40	CW	SP	3.3"	3.10"	1.8"x5/16"x1.8"	30080059,30080060	2
R2343	1/9	1/1050	115	3.20	CCW	SP	5.0"	2.90"	2.6"x1/2"	1094343	3

## Buck Stove

Part #	HP	Spd/RPM	Volts	Amps	Rot	Type	Dia	Body	Shaft	Comment	Fig
R1138	1/50	3/1550	115	0.88	CCW	SP	3.9"	4.00"	2.5"x5/16"	R22CCW270ZD, 7136-6045, 7163-5967	4
R1139	1/50	3/1550	115	0.88	CCW	SP	3.3"	2.80	2.5"x5/16"x1.12"	R22CW206MD	5

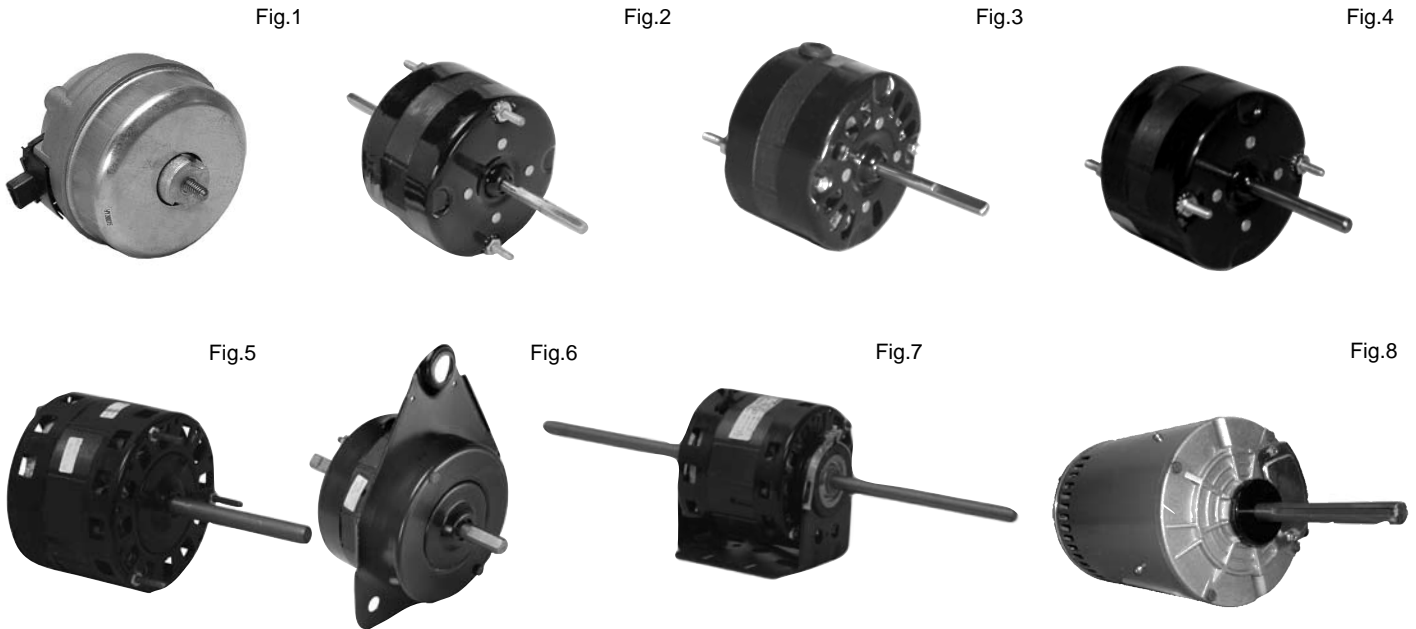
## Caloritech

Part #	HP	Spd/RPM	Volts	Amps	Rot	Type	Dia	Body	Shaft	Comment	Fig
R210	1/50	1/1550	230	0.40	CCW		3.3"	2.40"	1.5"x1/4"	ELEC. HEATERS	6
R217	1/35	1/1450	230	0.50	CW		3.3"	2.40"	1.2"x1/4"	ELEC. HEATERS	6
R213	1/25	1/1550	115	1.40	CCW		3.3"	3.10"	1.7"x5/16"	ELEC. HEATERS	7
R303	1/25	1/1550	115	1.40	CCW		3.3"	3.84"	3.3"x5/16"	ELEC. HEATERS	7

Rotation determined opposite shaft end  
Double shaft determined at lead end

Shaft length measured from  
hub face to shaft end





## Camco GE, Hot Point, Westinghouse

Part #	HP	Spd/RPM	Volts	Amps	Rot	Type	Dia	Body	Shaft	Comment	Fig
R5109	2W	1/1550	115	0.25	CW	SP	3.5"	2.50"	Threaded	WR60X77, 5109	1
R416	1/60	1/1550	115	0.76	CCW	SP	3.3"	2.20"	2.3"x1/4"x2.3"	127C75672	2
R319	1/50	1/1430	115	0.90	CCW	SP	3.3"	2.10"	2.2"x1/4"	828C580J07,09	3
R201	1/50	1/1430	115	0.85	CW	SP	3.3"	2.20"	2.3"x1/4"	828C580J02,03	4
R510	1/45	1/1550	115	1.10	CW	SP	3.3"	2.25"	1.1"x1/4"x1.5"	Humidifier	2
R340	1/20	1/1550	230	0.90	CCW	SP	3.3"	3.15"	2.0"x5/16"	198A6404	3
R2388	1/5	1/1075	208/230	1.50	REV	5/370	5.0"	3.90"	3.5"x1/2"	322P757	5
R745	1/4	2/1330	208/230	1.90	CCW	5/370	5.0"	3.40"	1.8"x1/2"x2.8"	C275399, WJ94M116	6
R747	1/3	1/1625	208/230	2.30	CCW	6/370	5.0"	4.00"	7.2"x1/2"x7.2"	350A103H16	7

## Canadian Armature

Part #	HP	Spd/RPM	Volts	Amps	Rot	Type	Dia	Body	Shaft	Comment	Fig
R203	1/70	1/1550	115	0.80	CCW	SP	3.3"	2.10"	1.5"x1/4"	Vent Fan	4

## Cancoil

Part #	HP	Spd/RPM	Volts	Amps	Rot	Type	Dia	Body	Shaft	Comment	Fig
T2544	2	1/1140	208/230/460	7.20	Rev	3 PH	6.5"	11.10"	5.0"x5/8"	Cond. Fan	8
T2536	2	1/1140	575	2.70	CW	3 PH	6.5"	11.10"	5.0"x5/8"	Cond. Fan	8

Fig.1

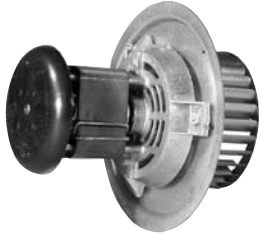


Fig.2



Fig.3



Fig.4



Fig.5



Fig.6



Fig.7



Fig.8



## Carrier

Part #	HP	Spd/RPM	Volts	Amps	Rot	Type	Dia	Body	Shaft	Comment	Fig
<b>RFB212</b>	<b>1/30</b>	1/3000	115	1.60	CCW	SP	Skel	6.3"	-	HC21ZE117-13	1
<b>RFM4</b>	<b>1/20</b>	1/3000	115/230	1.80	CW	SP	3.3"	6.0"	2.0"x1/4"	HC24AU700	4
<b>RFM5</b>	<b>1/20</b>	1/3000	115/230	1.80	CCW	SP	3.3"	6.0"	2.0"x1/4"	HC24AU600,701	4
<b>RFM580</b>	<b>1/20</b>	1/3300	115	1.70	CCW	SP	3.3"	5.9"	2.3"x5/16"	HC27VE122	2
<b>RFM3</b>	<b>1/16</b>	1/3400	230/460	0.40	CCW	SP	3.3"	6.3"	2.3"x1/4"	U660	4
<b>RFM653</b>	<b>1/16</b>	1/3430	230/460	0.40	CW	SP	3.3"	6.3"	2.3"x1/4"	U653	4
<b>RFM680</b>	<b>1/16</b>	1/3450	115/230	1.90	Rev	SP	3.3"	4.9"	2.5"x1/4"	HC680001B	3
<b>RFM232</b>	<b>1/16</b>	1/3450	208/230	0.55	CW	PSC/Inc	3.3"	5.0"	2.9"x5/16"	HC30GB232	3
<b>RFM462</b>	<b>1/16</b>	1/3450	460	0.30	CW	PSC/Inc	3.3"	4.75"	3.3"x5/16"	HC30GB460	3
<b>R52639</b>	<b>1/6</b>	5/1075	208/230	0.80	CCW	4/370	5.5"	4.0"	2.5"x1/2"x3.7"	HC37CA230, 700	5
<b>R22152</b>	<b>1/5</b>	2/1050	208/230	1.30	Rev	5/440	5.5"	3.4"	4.0"x1/2"	HC37VE230,600	5
<b>R22223</b>	<b>1/5</b>	1/1075	230	1.30	CCW	5/370	5.5"	3.8"	2.8"x1/2"	HC37VE230,D842	5
<b>R2391</b>	<b>1/5</b>	3/1075	208/230	1.50	Rev	7.5/370	5.0"	3.9"	5.5"x1/2"	HC37DA651	6
<b>R2390</b>	<b>1/5</b>	3/1075	115	3.20	Rev	7.5/370	5.0"	3.9"	5.5"x1/2"	HC37DA115	6
<b>R2387</b>	<b>1/5</b>	4/1050	115	7.80	CCW	SP	5.0"	4.1"	4.6"x1/2"	HC37MA134, 138	6
<b>R22844</b>	<b>1/4</b>	1/1625	230	1.50	CCW	4/370	5.5"	4.3"	1.5"x1/2"	HC37ME268, OCA1024	5
<b>R42440</b>	<b>1/4</b>	2/1075	208/230	2.20	Rev	5/370	5.5"	4.1"	4.3"x1/2"	HC39MZ220, C39VE608, HC39ML706,	8
<b>R22012</b>	<b>1/4</b>	2/1075	208/230	2.50	Rev	5/370	5.5"	4.1"	4.0"x1/2"	HC41VE700, 701	8

Fig.1



Fig.2

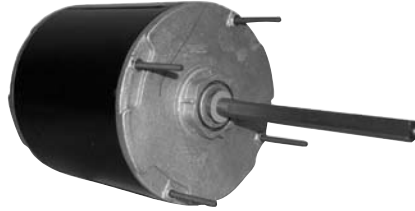


Fig.3



Fig.4



Fig.5



Fig.6



## Carrier Cont...

Part #	HP	Spd/RPM	Volts	Amps	Rot	Type	Dia	Body	Shaft	Comment	Fig
<b>S1502</b>	<b>1/3</b>	1/1075	208/230 460	2.80	Rev	5/440	5.5"	7.3"	3.5"x1/2"	Condenser Fan	1
<b>R32712</b>	<b>1/3</b>	2/1075	460	1.10	Rev	5/370	5.5"	4.7"	6.4"x1/2"	Condenser Fan	2
<b>R22015</b>	<b>1/3</b>	2/1075	208/230	1.80	R.P.	7.5/370	5.5"	4.8"	6.0"x1/2"	Condenser Fan	2
<b>R42415</b>	<b>1/3</b>	4/1050	115	10.20	CCW	SP	5.5"	4.4"	4.6"x1/2"	BDP	3
<b>R42310</b>	<b>1/3</b>	4/1075	115	6.40	Rev	5/370	5.5"	4.8"	6.0"x1/2"	HC41SE117, P251-2307, 06	4
<b>R42237</b>	<b>1/3</b>	4/1075	208/230	4.80	Rev	10/440	5.5"	5.3"	6.0"x1/2"	HC41SE651 HC39SE651	4
<b>R31718</b>	<b>1/2</b>	1/1050	460	0.90	R.P.	10/370	5.5"	5.3"	3.3"x1/2"	Blower Motor	2
<b>S1506</b>	<b>1/2</b>	1/1075	575	1.50	Rev	7.5/440	5.5"	9.2"	3.5"x1/2"	Condenser Fan	1
<b>S1504</b>	<b>1/2</b>	1/1075	200/230 460	3.20	Rev	7.5/440	5.5"	9.2"	3.5"x1/2"	Condenser Fan	1
<b>R22017</b>	<b>1/2</b>	1/1075	208/230	4.00	CCW	7.5/370	5.5"	7.4"	4.5"x1/2"	HC44SL230	3
<b>S1507A</b>	<b>1/2</b>	1/1075	200/230 460	4.60	Rev	7.5/440	5.5"	6.3"	2.9"x1/2"	Condenser Fan	1
<b>R42575</b>	<b>1/2</b>	1/1140	575	1.00	Rev	3 PH	5.5"	7.9"	2.5"x1/2"	HD44ML461	5
<b>T1532</b>	<b>1/2</b>	1/1140	200/230 460	3.00	Rev	3 PH	5.5"	9.2"	3.5"x1/2"	Condenser Fan	1
<b>R32716</b>	<b>1/2</b>	2/1075	460	2.00	Rev	10/370	5.5"	5.5"	6.4"x1/2"	Condenser Fan	2
<b>R52294</b>	<b>1/2</b>	3/1075	208/230	3.20	CCW	7.5/370	5.5"	5.5"	7.0"x1/2"x2.8"	HC43CE230, 5KCP39MGB2	6



Fig.1



Fig.2



Fig.3



Fig.4



Fig.5



Fig.6



Fig.7



Fig.8



## Carrier Cont...

Part #	HP	Spd/RPM	Volts	Amps	Rot	Type	Dia	Body	Shaft	Comment	Fig
<b>S1510</b>	<b>3/4</b>	1/1075	200/230 460	4.60	Rev	20/370	5.5"	10.8"	3.5"x1/2"	Condenser Fan	1
<b>T1534</b>	<b>3/4</b>	1/1140	200/230 460	4.00	Rev	3 PH	5.5"	11.0"	4.0"x5/8 KF	3 Phase Condenser Fan	1
<b>S1174</b>	<b>3/4</b>	1/1725	115/208 230	11.60	Rev	PSC/INC	5.5"	10.6"	2.0"x5/8" K	HC46DX610, 615	2
<b>R42257</b>	<b>3/4</b>	4/1075	208/230	5.40	R.P.	10/440	5.5"	5.5"	6.0"x1/2"	HC45SE651, P251-5701	3
<b>R42241</b>	<b>3/4</b>	4/1075	115	11.50	Rev	15/370	5.5"	7.3"	2.9"x1/2"	HC45SA114, P251-2702	7
<b>R32050</b>	<b>3/4</b>	3/1025	575	1.65	Rev	15/370	5.5"	6.5"	4.0"x1/2"	Commercial Rooftop	4
<b>R32051</b>	<b>3/4</b>	3/1075	460	2.15	Rev	15/370	5.5"	6.6"	4.0"x1/2"	HC45AL460	4
<b>S1455</b>	<b>1</b>	1/1075	575	2.10	CCW	30/370	5.5"	10.2"	3.5"x5/8" KF	Condenser Fan	1
<b>S1453</b>	<b>1</b>	1/1075	200/230 460	6.50	CCW	30/370	5.5"	10.2"	3.5"x5/8" KF	Condenser Fan	1
<b>S1514</b>	<b>1</b>	1/1075	200/230 460	6.40	Rev	25/370	5.5"	11.5"	4.0"x5/8"	HC51TE200	1
<b>T2538</b>	<b>1</b>	1/1140	208/230 460	6.60	Rev	3 PH	6.5"	11.1"	5.0"x5/8" KF	HD52VE214	5
<b>R42242</b>	<b>1</b>	3/1000	208/230	6.20	Rev	25/370	5.5"	7.3"	4.0"x5/8"	HC52AL230, 231, 232, HC52SE208	3
<b>T2156</b>	<b>2</b>	1/3450	208/230 460	5.20	Rev	3 PH	6.5"	11.6"	2.0"x5/8"	Condenser Fan	6
<b>T2166</b>	<b>3</b>	1/1750	208/230 460	8.20	Rev	3 PH	6.5"	12.6"	2.3"x7/8" K	Condenser Fan	6
<b>T2164</b>	<b>3</b>	1/3450	208/230 460	8.00	Rev	3 PH	6.5"	11.8"	2.3"x5/8" K	Condenser Fan	6
<b>H980</b>	<b>3</b>	1/1725	208/230 460	10.60	Rev	3 PH	6.5"	14.9"	2.3"x7/8"	HD60FK651	7
<b>H979</b>	<b>5</b>	1/1725	208/230 460	15.00	Rev	3 PH	6.5"	15.9"	2.3"x7/8"	HD60FK652	8
<b>T2168</b>	<b>5</b>	1/3450	208/230 460	13.00	Rev	3 PH	6.5"	11.9"	2.3"x7/8"	HD60AZ660	6

Rotation determined opposite shaft end  
Double shaft determined at lead end

Shaft length measured from  
hub face to shaft end

Fig.1

Fig.2

Fig.3

Fig.4

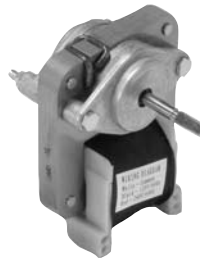


Fig.5

Fig.6

Fig.7

Fig.8



## Chrysler

Part #	HP	Spd/RPM	Volts	Amps	Rot	Type	Dia	Body	Shaft	Comment	Fig
<b>R760</b>	<b>1/8</b>	3/1100	115	1.30	CW	SP	5.5"	3.6"	2.0"x1/2"x2.8"	3525153	1
<b>R22002</b>	<b>1/6</b>	1/1065	208/230	1.30	CW	SP	5.5"	3.5"	3.0"x1/2"	3775858	2

## Chromalox

Part #	HP	Spd/RPM	Volts	Amps	Rot	Type	Dia	Body	Shaft	Comment	Fig
<b>R611</b>	<b>1/300</b>	1/1500	115	0.55	CW	SP	Skel	0.55"	1.7"x0.181"	12657-006,	3
<b>R617</b>	<b>1/285</b>	1/1900	208/230	0.22	CCW	SP	Skel	0.40"	1.1"x0.181"	12657-004, 005, 04290-004	3
<b>R215</b>	<b>1/115</b>	1/1550	230	0.22	CCW	SP	3.3"	2.10"	2.3"x6/16"	01513-005	4
<b>R635</b>	<b>1/75</b>	1/1700	208/230	0.95	CW	SP	Skel	1.50"	1.5"x1/4"	Construction Heater	3
<b>R210</b>	<b>1/50</b>	1/1550	230	0.40	CCW	SP	3.3"	2.40"	1.5"x1/4"	12519-002	5
<b>R217</b>	<b>1/35</b>	1/1450	230	0.50	CW	SP	3.3"	2.40"	1.2"x1/4"	02188-002	5
<b>R212</b>	<b>1/30</b>	1/1550	230	0.55	CCW	SP	3.3"	2.80"	3.5"x5/16"	01513-002,003,0 10,011,016	4
<b>R480</b>	<b>1/30</b>	1/1550	208/230	0.80	CCW	SP	3.3"	4.00"	2.4"x3/8"	A2001B	6
<b>R2639</b>	<b>1/20</b>	2/1075	208/230	0.42	CW	3/370	5.0"	3.34"	1.95"x1/2"	01103-100	7
<b>R2928</b>	<b>1/12</b>	1/1000	208/230	0.60	CCW	3/370	5.0"	3.09"	2.45"x1/2"	01103-202	7
<b>R2671</b>	<b>1/10</b>	3/1610	208/230	0.60	CCW	PSC/INC	5.0"	3.09"	8.6"x1/2"x8.6"	807-101, DE2E106N	7
<b>R2929</b>	<b>3/16</b>	1/1050	208/230	1.30	CW	4/370	5.0"	3.34"	2.45"x1/2"	01103-201	7
<b>R52170</b>	<b>1/4</b>	1/1725	208/230	2.10	Rev	SP	5.5"	7.00"	5.5"x1/2"x5.5"	078589	8

Fig.1



Fig.2



Fig.3



Fig.4



Fig.5



Fig.6



Fig.7



Fig.8



## Clare Brothers

Part #	HP	Spd/RPM	Volts	Amps	Rot	Type	Dia	Body	Shaft	Comment	Fig
<b>RFM11</b>	<b>1/20</b>	1/3200	115	3.00	CCW		3.3"	3.6"	1.5"x5/16"	M045, High Efficiency	1
<b>RFM12</b>	<b>1/15</b>	1/3100	115	3.00	CCW		3.3"	5.8"	2.0"x5/16"	M046	2
<b>RFB17</b>	<b>1/15</b>	1/3100	115	2.00	CCW		3.3"	-	-	V17, V10, V25	3

## Clawsey - Sohrt

Part #	HP	Spd/RPM	Volts	Amps	Rot	Type	Dia	Body	Shaft	Comment	Fig
<b>R404</b>	<b>1/50</b>	1/1550	115	0.85	CCW	SP	3.3"	2.84"	1.8"x5/16"	Space Heater	4

## Climetec

Part #	HP	Spd/RPM	Volts	Amps	Rot	Type	Dia	Body	Shaft	Comment	Fig
<b>R2198</b>	<b>1/14</b>	3/820	115	1.30	CCW	7.5/370	5.0"	4.50"	3.4"x1/2"	C/W Plug	5
<b>R2197</b>	<b>1/14</b>	3/820	115	1.30	CCW	7.5/370	5.0"	4.50"	3.4"x1/2"	C/W Plug, 8.37" bolt circle	6
<b>DD-029</b>	<b>1/8</b>	5/1000	115	2.10	Rev	PSC/INC	5.5"	3.61"	5.0"x1/2"	L350, L450, L600, DA3E200, DA3F100, DA3G142, R2299	7

## Climate Master

Part #	HP	Spd/RPM	Volts	Amps	Rot	Type	Dia	Body	Shaft	Comment	Fig
<b>T2541</b>	<b>1</b>	1/1140	575	1.70	Rev	SP	6.5"	8.22"	5.0"x5/8"	5J999GBX, 56T105308	8

Fig.1



Fig.2



Fig.3



Fig.4



Fig.5

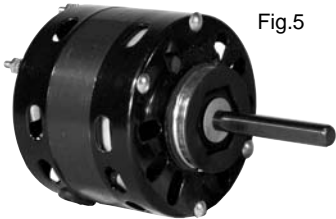


Fig.6



Fig.7



## Coldstream Refrigeration

Part #	HP	Spd/RPM	Volts	Amps	Rot	Type	Dia	Body	Shaft	Comment	Fig
<b>R128</b>	<b>1/135</b>	1/1550	115	0.40	CW	SP	3.3"	1.94"	0.6" Hubless	Refrigeration Cases	1
<b>R230</b>	<b>1/70</b>	1/2800	115	0.66	CCW	SP	3.3"	2.16"	1.3" x 1/4"	Refrigeration Cases	2
<b>R122</b>	<b>1/60</b>	1/1550	230	0.35	CW	SP	3.3"	2.19"	0.6" Hubless	Refrigeration Cases	1
<b>R121</b>	<b>1/60</b>	1/1550	230	0.35	CCW	SP	3.3"	2.19"	0.6" Hubless	Refrigeration Cases	1
<b>R137</b>	<b>1/60</b>	1/1550	115	0.55	CW	SP	3.3"	2.19"	0.6" Hubless	Refrigeration Cases	1

## Coleman

Part #	HP	Spd/RPM	Volts	Amps	Rot	Type	Dia	Body	Shaft	Comment	Fig
<b>RFB156</b>	<b>1/50</b>	1/3000	115	1.30	CCW	SP	3.3"	6.0"	-	7021-9404	3
<b>RFB391</b>	<b>1/25</b>	1/3000	115	1.10	CCW	SP	3.3"	6.0"	-	7021-5478	4
<b>R2386</b>	<b>1/8</b>	2/1050	115	5.00	CCW	SP	5.0"	3.9"	3.8"x1/2"	Tapped holes for mounting	5
<b>R2645</b>	<b>1/4</b>	2/1625	115	3.10	CW	7.5/370	5.0"	2.2"	5.7"x1/2"x5.7"	322P708	5

## Comfort Air

Part #	HP	Spd/RPM	Volts	Amps	Rot	Type	Dia	Body	Shaft	Comment	Fig
<b>R32050</b>	<b>3/4</b>	3/1025	575	1.65	Rev	15/370	5.5"	6.5"	4.0"x1/2"	Commercial Rooftop	6
<b>R32051</b>	<b>3/4</b>	3/1075	460	2.15	Rev	15/370	5.5"	6.6"	4.0"x1/2"	Commercial Rooftop	6

## Command Air

Part #	HP	Spd/RPM	Volts	Amps	Rot	Type	Dia	Body	Shaft	Comment	Fig
<b>R42141</b>	<b>1</b>	1/1075	208/230 460	7.60	Rev	PSC/INC	5.5"	8.5"	6.0"x5/8"	G.E.	7

Fig.1



Fig.2



Fig.3

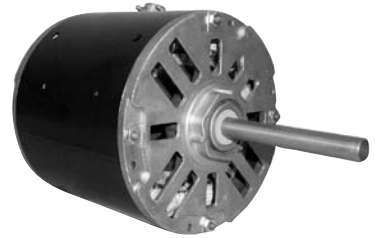


Fig.4



Fig.5

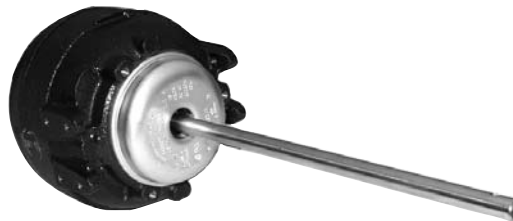
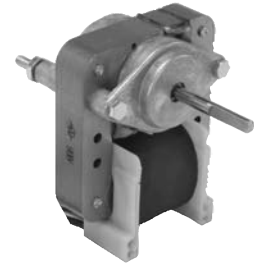


Fig.6



## Copeland

Part #	HP	Spd/RPM	Volts	Amps	Rot	Type	Dia	Body	Shaft	Comment	Fig
R5311	6W	1/1550	120	0.36	CW	SP	3.5"	2.8"	HUBLESS	GE5311	1
R5421	9W	1/1550	208/230	0.29	CW	SP	3.5"	2.8"	HUBLESS	GE5421	1
R5411	9W	1/1550	120	0.58	CW	SP	3.5"	2.8"	HUBLESS	GE5411	1
R3512	35W	1/1550	208/230	0.70	CW	SP	3.8"	3.5"	HUBLESS	050-0227-02	2
R3511	35W	1/1550	120	1.40	CW	SP	3.8"	3.5"	HUBLESS	050-0227-01	2
R5012	50W	1/1550	208/230	0.85	CW	SP	3.8"	4.5"	HUBLESS	050-0017-01	1
R5022	50W	1/1550	208/230	0.85	CCW	SP	3.8"	4.5"	HUBLESS	050-0011-00	1
R3047	1/4	1/1625	208/230	1.50	CW	5/370	5.5"	4.30"	2.5" x 1/2"	050-0107-01, 0238-00	3
R3005	1/3	1/825	208/230	2.40	CW	5/370	5.5"	5.00"	3.5" x 1/2"	050-0234-00, 0107-02	3
S1502	1/3	1/1075	200/230 460	1.40	Rev	5/440	5.5"	7.30"	3.5" x 1/2"	050-0015-00, 0105-00	4
T1536	3/4	1/1140	575	1.50	Rev	3 Ph	5.5"	11.00"	4.0" x 5/8"	050-0169-00,01,0236-00	4

## Cornelius - QBD

Part #	HP	Spd/RPM	Volts	Amps	Rot	Type	Dia	Body	Shaft	Comment	Fig
R6247	5W	1/1550	115	0.60	CW	SP	3.5"	3.4"	Hubless	Condenser	1
R6243	6W	1/1550	115	0.60	CW	SP	3.5"	3.4"	Hubless	Condenser	1
R6273	9W	1/1550	115	0.58	CW	SP	3.5"	3.1"	Hubless	Condenser	1
R6203	15W	1/1550	115	0.60	CCW	SP	3.9"	3.5"	7.0"x5/16"	Agitator	5
R6204	25W	1/1550	115	1.10	CCW	SP	3.9"	3.5"	5.6"x5/16"	Agitator	5
R6205	25W	1/1550	115	1.10	CCW	SP	3.9"	3.5"	7.0"x5/16"	Agitator	5
R6206	50W	1/1550	115	1.70	CW	SP	3.9"	3.5"	3.0"x5/16"	134350000, ESPOL05OEM B1	5



Fig.1



Fig.2



Fig.3



Fig.4



Fig.5



Fig.6



Fig.7



Fig.8

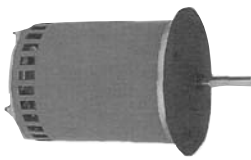


Fig.9



Fig.10



## Ducane, Lennox Air Flo

Part #	HP	Spd/RPM	Volts	Amps	Rot	Type	Dia	Body	Shaft	Comment	Fig
<b>RFB936</b>	<b>1/60</b>	1/2800	115	1.10	CCW	SP	3.3"	6.4"	-	MPG50B3, 75B3, B4, 100B4, B5, 125B5, 20093601, 20282002	1
<b>RFB282</b>	<b>1/16</b>	1/3000	115	1.10	CCW	SP	3.3"	7.63"	-	CMPB50U2-50U3, 75U2, 75U3, 20282001	2
<b>RFB540</b>	<b>1/10</b>	1/3450	115	0.70	CCW	PSC/INC	3.3"	6.5"	-	CMPA50U2A, 75U2A, 100U2A, 125U2A, 20054001, 20000101	3

## Dundas Foundry

Part #	HP	Spd/RPM	Volts	Amps	Rot	Type	Dia	Body	Shaft	Comment	Fig
<b>RFB500</b>	<b>1/30</b>	1/2860	115	1.10	CCW	SP	3.3"	5.5"	-	Cooler Blower Fan, UE9492	4
<b>RB27</b>	<b>53W</b>	1/2400	115	0.92	CCW	SP	-	-	-	FK26	5

## Dunham Bush

Part #	HP	Spd/RPM	Volts	Amps	Rot	Type	Dia	Body	Shaft	Comment	Fig
<b>R124</b>	<b>1/20</b>	1/1550	115	1.60	CCW	SP	3.3"	2.78"	0.90" Hubless	350044, 46, MM2847	6
<b>R125</b>	<b>1/20</b>	1/1550	230	0.75	CCW	SP	3.3"	2.78"	0.90" Hubless	350043, 45, MM2848	6
<b>R42811</b>	<b>1/8</b>	1/1050	115	2.70	CCW	PSC/Inc	5.5"	4.00"	4.8" x 1/2"	350014, 16, E310025	7
<b>S1510</b>	<b>3/4</b>	1/1075	200/230 /460	2.30	Rev	20/370	5.5"	12.20"	3.5" x 1/2"	371027	8
<b>UE-9428</b>	<b>1</b>	1/1100	575	1.60	Rev	3 Ph	6.5"	7.50"	1/2" x 2 3/4"	0371025	9
<b>T1538</b>	<b>1</b>	1/1140	200/230 /460	5.60	Rev	3 Ph	5.5"	11.50"	4.0"x5/8" KF	371026	8
<b>T1540</b>	<b>1</b>	1/1140	575	2.30	Rev	3 Ph	5.5"	11.50"	4.0" x 5/8"	371025, T1538	8
<b>T2158</b>	<b>2</b>	1/1750	208/230 /460	6.00	Rev	3 Ph	6.5"	11.60"	2.3" x 7/8"	390080	10
<b>T2166</b>	<b>2</b>	1/1750	208/230 /460	8.40	Rev	3 Ph	6.5"	12.60"	2.3" x 7/8"	390082,87,88	10

Fig. 1



Fig. 2



Fig. 3



Fig. 4



Fig. 5



Fig. 6

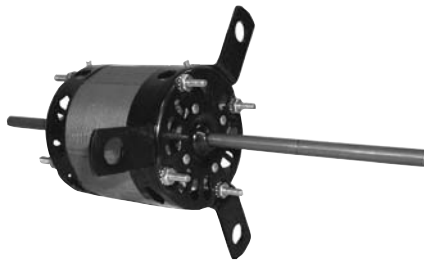
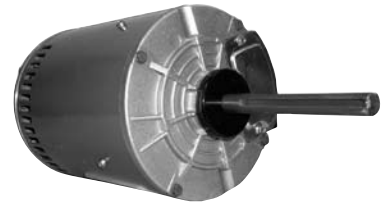


Fig. 7



Fig. 8



## Duotherm

Part #	HP	Spd/RPM	Volts	Amps	Type	Rot	Dia	Body	Shaft	Comment	Fig
<b>R404</b>	<b>1/50</b>	1/1550	115	0.85	SP	CCW	3.3"	2.84"	1.8"x5/16"	Space Heater	1

## E.K.W. (Electrohome - Keeprite - Woods)

Part #	HP	Spd/RPM	Volts	Amps	Rot	Type	Dia	Body	Shaft	Comment	Fig
<b>R506</b>	<b>1/240</b>	1/1400	115	0.43	CW	SP	3.3"	1.90"	2.0"x1/4"	2N8701	2
<b>R503</b>	<b>1/130</b>	1/1550	115	0.40	CW	SP	3.3"	2.09"	2.4"x1/4"	SN4702	2
<b>R325</b>	<b>1/125</b>	1/1550	115	0.33	CCW	SP	3.3"	2.09"	2.3"x1/4"	2N8001	3
<b>R235</b>	<b>1/80</b>	1/1050	115	0.90	CCW	SP	3.3"	2.35"	1.1"x1/4"	W.C. Woods	3
<b>R512</b>	<b>1/75</b>	1/1550	115	0.62	CW	SP	3.3"	2.09"	1.0"x1/4"	2N10201	2
<b>R201</b>	<b>1/50</b>	1/1430	115	0.85	CW	SP	3.3"	2.20"	2.3"x1/4"	Humidifiers	2
<b>R236</b>	<b>1/50</b>	2/1575	115	1.00	CCW	SP	3.3"	2.25"	1.1"x1/4"	27009909, 471628009	4
<b>R510</b>	<b>1/45</b>	3/1550	115	1.10	CW	SP	3.3"	2.25"	1.1"x1/4"x1.5"	W.C. Woods	3
<b>R336</b>	<b>1/25</b>	1/1550	115	1.50	CCW	SP	3.3"	2.60"	1.2"x1/4"	W.C. Woods	5
<b>R717</b>	<b>1/15</b>	3/1550	115	2.00	CCW	SP	3.3"	3.50"	5.0"x5/16"x3.5"	SM717	3
<b>R729</b>	<b>1/15</b>	3/1550	115	2.00	CCW	SP	3.3"	3.50"	3.5"x5/16"x5.0"	SM704	6
<b>R731</b>	<b>1/15</b>	2/1550	115	2.35	CCW	SP	4.1"	3.10"	2.3"x3/8"x2.3"	SM703	7
<b>R736</b>	<b>1/12</b>	3/1080	115	3.50	CCW	4/370	5.0"	3.50"	1.9"x1/2"x2.7"	SM701, 715, 706, 716, 721	7
<b>R780</b>	<b>1/8</b>	3/1330	115	1.70	CCW	10/370	5.0"	3.50"	2.4"x1/2"x5.0"	89395, 200423, SM713	7
<b>T2538</b>	<b>1</b>	1/1140	208/230 460	4.20	Rev	3 PH	6.5"	9.10"	5.0"x5/8"	170518, 502595	8
<b>T2540</b>	<b>1</b>	1/1140	575	1.20	Rev	3 PH	6.5"	9.10"	5.0"x5/8"	170517, KPN502597	8

Rotation determined opposite shaft end  
Double shaft determined at lead end

Shaft length measured from  
hub face to shaft end

Fig. 1



Fig. 2



Fig. 3



Fig. 4



Fig. 5



Fig. 6



Fig. 7



## Elmira Woodstoves

Part #	HP	Spd/RPM	Volts	Amps	Rot	Dia	Body	Shaft	Comment	Fig
<b>RB200T-2</b>	<b>35W</b>	2/1600	115	0.80	CCW	3.3"	3.5"	-	200 CFM Blower	1
<b>R489</b>	<b>1/60</b>	3/1300	115	0.92	CW	3.3"	2.5"	3.6"x5/16"x3.5	1500, 1600	2
<b>RB34</b>	<b>1/55</b>	1/3200	115	0.88	CW	3.3"	6.6"	-	Gen. Replacement	3

## Emerson

Part #	HP	Spd/RPM	Volts	Amps	Rot	Type	Dia	Body	Shaft	Comment	Fig
<b>R506</b>	<b>1/240</b>	1/1400	115	0.43	CW	SP	3.3"	1.90"	2.0"x1/4"	VENT FAN	4
<b>R209</b>	<b>1/45</b>	1/1550	115	0.87	CW	SP	3.3"	2.30"	1.5"x5/16"	VENT FAN	4
<b>R742</b>	<b>1/10</b>	3/1080	115	1.40	CCW	4/370	5.0"	3.30"	2.2"x1/2"x2.6"	QUIET COOL A/C	5
<b>R743</b>	<b>1/5</b>	3/1400	208/230	1.60	CCW	5/370	5.0"	3.90"	2.5"x1/2"x3.5"	QUIET COOL A/C	5
<b>R2630</b>	<b>1/3</b>	2/1400	208/230	2.40	CW	6/370	5.0"	4.10"	5.0"x1/2"	F1611, QUIET COOL	6

## F.P.E. (Federal Pioneer - Westcan)

Part #	HP	Spd/RPM	Volts	Amps	Rot	Type	Dia	Body	Shaft	Comment	Fig
<b>R302</b>	<b>1/100</b>	1/1550	230	0.20	CW	SP	3.3"	2.25"	2.0"x1/4"	L81512W1	7
<b>R511</b>	<b>1/100</b>	1/1350	230	0.28	CW	SP	3.3"	2.10"	2.0"x1/4"	Electric Heaters	7
<b>R217</b>	<b>1/35</b>	1/1450	230	0.50	CW	SP	3.3"	2.40"	1.2"x1/4"	L82116A4	7

Fig. 1

Fig. 2

Fig. 3

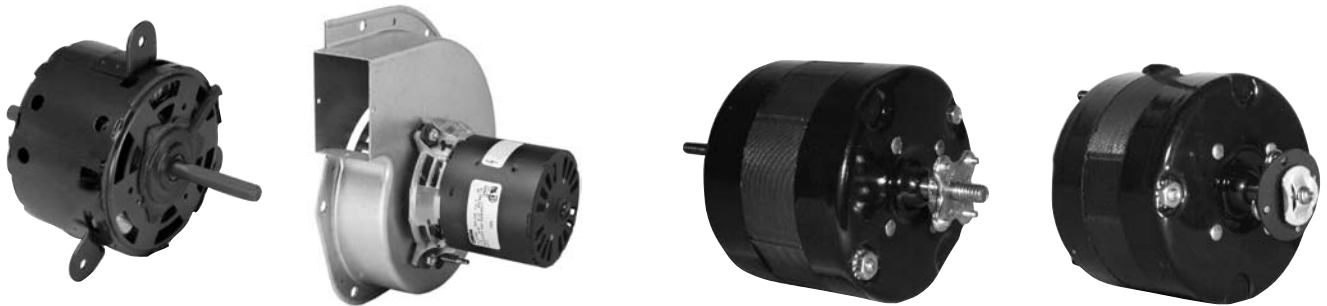


Fig. 4

Fig. 5

Fig. 6

Fig. 7



## Fedders

Part #	HP	Spd/RPM	Volts	Amps	Rot	Type	Dia	Body	Shaft	Comment	Fig
<b>R740</b>	<b>1/6</b>	2/1050	208/230	2.20	CCW	SP	5.0"	3.00"	2.3"x1/2"x4.0"	S196-00161-003, 016	1
<b>R52126</b>	<b>1/6</b>	3/1075	115	2.20	CCW	5/370	5.5"	3.80"	7.5"x1/2"x8.1"	R.A.C.	2
<b>R22180</b>	<b>1/5</b>	1/1080	208/230	1.30	CW	PSC/INC	5.5"	3.70"	4.3"x1/2"	S196-179-1, 66-1	3
<b>R881</b>	<b>1/4</b>	3/1075	208/230	2.20	CCW	5/370	5.5"	3.90"	2.5"x1/2"x4.5"	S196-58-2	1
<b>R52113</b>	<b>1/4</b>	3/1075	208/230	1.90	CCW	5/370	5.5"	4.00"	7.5"x1/2"x8.0"	R.A.C.	2
<b>R52288</b>	<b>1/2</b>	3/1075	208/230	3.80	CW	5/370	5.5"	4.80"	4.0"x1/2"x3.0"	S196-170-6	4

## Flame Master

Part #	HP	Spd/RPM	Volts	Amps	Rot	Type	Dia	Body	Shaft	Comment	Fig
<b>RFB111</b>	<b>1/25</b>	1/3000	120	1.2	CCW	SP	3.3"	6.0"	-		5

## Foster Refrigeration

Part #	HP	Spd/RPM	Volts	Amps	Rot	Type	Dia	Body	Shaft	Comment	Fig
<b>R120</b>	<b>1/85</b>	1/1550	115	0.45	CW	SP	3.3"	2.19"	0.6" Hubless	Refrigeration Cases	6
<b>R119</b>	<b>1/85</b>	1/1550	115	0.45	CCW	SP	3.3"	2.19"	0.6" Hubless	Refrigeration Cases	6
<b>R127</b>	<b>1/75</b>	1/1550	115	0.75	CCW	SP	3.3"	1.94"	1.0" Hubless	Refrigeration Cases	6
<b>R122</b>	<b>1/60</b>	1/1550	230	0.35	CW	SP	3.3"	2.19"	0.6" Hubless	Refrigeration Cases	6
<b>R121</b>	<b>1/60</b>	1/1550	230	0.35	CCW	SP	3.3"	2.19"	0.6" Hubless	Refrigeration Cases	6
<b>R101</b>	<b>1/45</b>	1/1550	115	0.90	CW	SP	3.3"	2.19"	0.7" Hubless	Refrigeration Cases	7
<b>R103</b>	<b>1/45</b>	1/1550	115	0.90	CCW	SP	3.3"	2.19"	0.7" Hubless	Refrigeration Cases	7

Rotation determined opposite shaft end  
Double shaft determined at lead end

Shaft length measured from  
hub face to shaft end

Fig.1

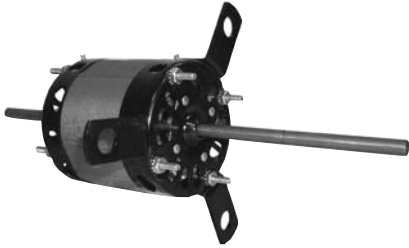


Fig.2



Fig.3

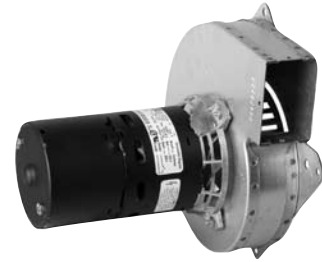


Fig.4



Fig.5



Fig.6



## Friedrich

Part #	HP	Spd/RPM	Volts	Amps	Rot	Type	Dia	Body	Shaft	Comment	Fig
<b>R52639</b>	<b>1/6</b>	5/1075	208/230	0.80	CCW	4/370	5.5"	4.00"	2.5"x1/2"x3.7"	R.A.C.	1

## Frigidaire

Part #	Watts	Spd/RPM	Volts	Amps	Rot	Type	Dia	Body	Shaft	Comment	Fig
<b>R4110</b>	<b>23</b>	1/1550	115	0.80	CW	SP	3.9"	4.00"	2.5"x5/16"	Agitator	2

## Goodman-Janitrol

Part #	HP	Spd/RPM	Volts	Amps	Rot	Type	Dia	Body	Shaft	Comment	Fig
<b>RFB162</b>		1/3000	208/230	0.50	CW	SP	3.3"	8.5"	-	82959000	3
<b>RFB140</b>		1/3450	115	1.40	CCW	SP	3.3"	5.6"	-	B28330-01	4
<b>RFB185</b>		1/3000	115	1.30	CW	SP	Skel	5.80"	-	B1859005, Gaskets Included	5
<b>RFB590</b>	<b>1/30</b>	1/3000	115	1.40	CW	SP	Skel	5.44"	-	B40590-00	5
<b>RFB595</b>	<b>1/30</b>	1/3000	115	1.40	CW	SP	Skel	5.89"	-	B18590-05	5
<b>RFB276</b>	<b>1/30</b>	1/3000	115	1.40	CW	SP	Skel	5.44"	-	0131M00002P	5
<b>RFB501</b>	<b>1/20</b>	1/3000	115	2.80	CW	SP	Skel	5.57"	-	22307501	6





Fig.1



Fig.2



Fig.3



Fig.4



Fig.5



Fig.6

## Grimsby

Part #	HP	Spd/RPM	Volts	Amps	Type	Rot	Dia	Body	Shaft	Comment	Fig
<b>RFB111</b>	<b>1/25</b>	1/3000	115	1.20	SP	CCW	3.3"	6.0"	-	SBC375, CPL1132	1

## G.S.W.

Part #	HP	Spd/RPM	Volts	Amps	Type	Rot	Dia	Body	Shaft	Comment	Fig
<b>RFB127</b>	<b>1/20</b>	1/3200	115	1.30	SP	CCW	3.3"	12.5"	-	63172, 63418	2
<b>RFB172</b>	<b>1/20</b>	1/3200	115	1.30	SP	CCW	3.3"	12.5"	-	63172, 63418, 7021-8247	3

## Habco (H.A. Brown)

Part #	HP	Spd/RPM	Volts	Amps	Type	Rot	Dia	Body	Shaft	Comment	Fig
<b>R606</b>	<b>1/130</b>	1/3000	115	0.50	SP	CCW	Skel	0.65"	1.0"x7/32"	CO21795	4
<b>R607</b>	<b>1/50</b>	1/2300	115	1.30	SP	CCW	Skel	1.16"	1.75"x7.32"	CO21617	4

## Hartell

Part #	HP	Spd/RPM	Volts	Amps	Type	Rot	Dia	Body	Shaft	Comment	Fig
<b>R4110</b>	<b>23 W</b>	1/1550	115	0.80	SP	CW	3.9"	4.00"	2.5"x5/16"	Agitator	5

## Hearth & Home Technologies

Part #	HP	Spd/RPM	Volts	Amps	Type	Rot	Dia	Body	Shaft	Comment	Fig
<b>RB81</b>	<b>81 W</b>	1/2400	115	0.92	SP			12.8"x4.5"x4.3"	-	FKGAS	6

Rotation determined opposite shaft end  
Double shaft determined at lead end

Shaft length measured from  
hub face to shaft end

Fig.1



Fig.2



Fig.3



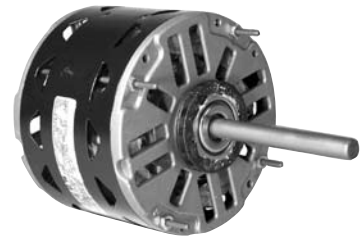
Fig.4



Fig.5



Fig.6



## Heat-N-Glow

Part #	CFM	Spd/RPM	Volts	Amps	Type	Rot	Dia	Body	Shaft	Comment	Fig
<b>RB168</b>	<b>168</b>	1/2900	115	1.10	SP	CW	Skel	12.75"	-	7002-1241,GFK160A	1

## Heatilator

Part #	Watts	Spd/RPM	Volts	Amps	Type	Rot	Dia	Body	Shaft	Comment	Fig
<b>RB21K</b>	<b>35</b>	1/1800	115	0.75	SP	CCW	Skel	8.0"x4.3"x3.6"	-	FK21,GFK21	2
<b>RB74K</b>	<b>50</b>	1/1250	115	0.86	SP	CW	Skel	12.9"x4.3"x3.6"	-	FK4, GFK4	3

## Heritage Energy Fireplaces

Part #	HP	Spd/RPM	Volts	Amps	Type	Rot	Dia	Body	Shaft	Comment	Fig
<b>RB33</b>	<b>1/65</b>	1/3200	115	0.70	SP	CW	3.3"	6.6"	-	2040001	4
<b>RB60</b>	<b>1/50</b>	1/3200	115	1.00	SP	CW	3.3"	5.5"	-	2810-005-052, EM60, IC18	5

## Heil - Quaker

Part #	HP	Spd/RPM	Volts	Amps	Type	Rot	Dia	Body	Shaft	Comment	Fig
<b>R42800</b>	<b>1/2</b>	4/1050	115	11.00	SP	R.P.	5.5"	5.80"	5.5"x5/8"	Furnace/ Evaporator	6



## Hill

Part #	HP	Spd/RPM	Volts	Amps	Rot	Type	Dia	Body	Shaft	Comment	Fig
<b>R5911</b>	<b>6W</b>	1/1550	115	0.40	CW	SP	3.5"	3.40"	-	PP7577M	1
<b>R5411</b>	<b>9W</b>	1/1550	115	0.58	CW	SP	3.5"	2.80"	-	GE5411	1
<b>R5711</b>	<b>15W</b>	1/1550	115	0.37	CW	PSC	3.5"	3.50"	-	P41661	2
<b>R5720</b>	<b>15W</b>	1/1550	115	0.37	Rev	PSC	3.5"	3.50"	-	P23956	2
<b>R2011</b>	<b>20W</b>	1/1550	115	0.80	CW	SP	3.5"	3.75"	-	PP20934F	2
<b>R129</b>	<b>1/55</b>	1/3000	115	0.70	CCW	SP	3.3"	2.41"	0.5" Hubless	PP32032E	3
<b>R3001</b>	<b>1/3</b>	1/1625	208/230	1.80	CW	PSC/INC	5.5"	4.50"	3.5"x1/2"	PP3955B	4
<b>R3067</b>	<b>1</b>	1/1075	208/230	7.10	Rev	PSC/15/370	5.5"	9.20"	3.8"x1/2"	PP19162G	4

## Honeywell

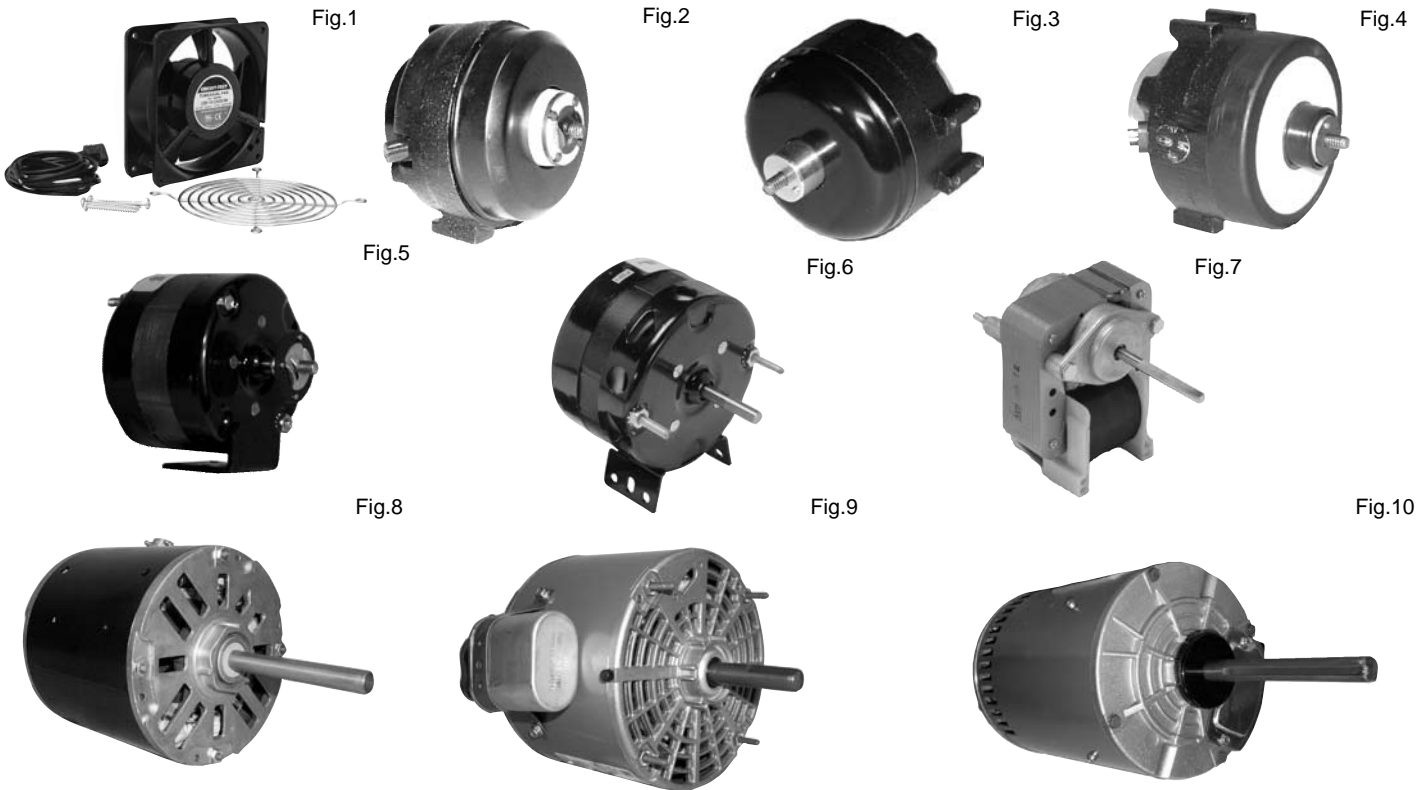
Part #	HP	Spd/RPM	Volts	Amps	Type	Rot	Dia	Body	Shaft	Comment	Fig
<b>R2654</b>	<b>1/12</b>	3/1075	115	3.10	SP	CW	5.0"	2.7"	3.9"x1/2"	190386A	5

## Hunter

Part #	HP	Spd/RPM	Volts	Amps	Type	Rot	Dia	Body	Shaft	Comment	Fig
<b>RB48</b>	<b>-</b>	1/2700	115	0.19	SP	CCW	-	4 3/4"x4 3/4"x1 5/8"	-	921482	6
<b>RB79</b>	<b>62W</b>	1/1200	115	1.10	SP	CCW	Skel	15.7"x4.3"x3.6"	-	F125H, HWF30, HDV30	7
<b>RB68</b>	<b>50W</b>	1/1250	115	0.86	SP	CW	Skel	12.9"x4.3" x3.6"	-	770, HDS2000, HDS3000, HF130, HDV31, MGDV31, SFDV20	8
<b>RB91</b>	<b>1/250</b>	1/1500	115	0.30	SP	CCW	3.3"	5.5"	-	912754	9
<b>RB735</b>	<b>1/125</b>	1/1500	115	0.36	SP	CCW	3.3"	5.7"	-	7036-7735	11
<b>R325</b>	<b>1/125</b>	1/1500	115	0.40	SP	CCW	3.3"	2.06"	2.3"x1/4"	2SR	10
<b>R108</b>	<b>1/95</b>	1/1550	115	0.55	SP	CCW	3.3"	2.0"	Hubless	124574	12

Rotation determined opposite shaft end  
Double shaft determined at lead end

Shaft length measured from  
hub face to shaft end



## Hussmann

Part #	HP	Spd/RPM	Volts	Amps	Rot	Type	Body	Dia	Shaft	Comment	Fig
<b>RF2466</b>	<b>105 CFM</b>	1/3000	115 VAC	0.14	-	SP	-	Axial	-	HUSSMANN 392466, R2466 44db (A) Terminal Connection	1
<b>EE-5610</b>	<b>6</b>	1/1550	115	0.40	CW	SP	3.30"	3.5"	Hubless	38360	2
<b>EE-5611</b>	<b>9</b>	1/1550	115	0.52	CW	SP	3.30"	3.5"	Hubless	4700, 58698	2
<b>R5611</b>	<b>9</b>	1/1550	115	0.66	CW	SP	3.10"	3.5"	Hubless	4700, 58698	3
<b>R5612</b>	<b>9</b>	1/1550	115	0.66	CCW	SP	3.10"	3.5"	Hubless	38360	3
<b>R101L</b>	<b>9</b>	1/1550	115	0.90	CW	SP	2.36"	3.3"	0.7" Hubless	Available w/o leg (R101)	5
<b>R103L</b>	<b>9</b>	1/1550	115	0.90	CCW	SP	2.36"	3.3"	0.7" Hubless	Available w/o leg (R103)	5
<b>R5720</b>	<b>15</b>	1/1550	115	0.37	Rev.	SP	3.50"	3.5"	Hubless	302555, 254582, 411151	4
<b>R5711</b>	<b>15</b>	1/1550	115	0.37	CW	SP	3.50"	3.5"	Hubless	301263, 301264, 329646, 400603	4
<b>R326</b>	<b>1/110</b>	1/1550	115	0.40	CW	SP	2.09"	3.3"	1.4"x1/4"	Evap. Motor	6
<b>R605</b>	<b>1/55</b>	1/2800	115	0.90	CW	SP	0.90"	Skel	1.7"x.181"	P211116966a	7
<b>R130</b>	<b>1/25</b>	1/1550	230	0.80	CW	SP	2.72"	3.3"	1.5"x5/16"	Evap. Motor	6
<b>R318</b>	<b>1/25</b>	1/1550	115	1.50	CW	SP	2.80"	3.3"	2.8"x5/16"	Evap. Motor	6
<b>R3006</b>	<b>1/6</b>	1/1075	208/230	1.20	CW	PSC/INC	4.20"	5.5"	1.5"x1/2"	GE3006	8
<b>R30575</b>	<b>1/6</b>	1/1550	575	0.50	Rev	PSC/INC	4.50"	5.5"	2.2"x1/2"	77228, 77238	9
<b>R34201</b>	<b>1/5</b>	1/1075	575	0.50	CW	PSC/INC	4.50"	5.5"	2.5"x1/2"	204201	9
<b>T2538</b>	<b>1</b>	1/1140	208/230 460	4.10	Rev	3 Ph	8.22"	6.5"	5.0"x5/8"	170518, 502595	10
<b>T2540</b>	<b>1</b>	1/1140	575	1.70	Rev	3 Ph	9.10"	6.5"	5.0"x5/8"	170517, KPN502597	10



## ICP

Part #	HP	Spd/RPM	Volts	Amps	Rot	Type	Dia	Body	Shaft	Comment	Fig
<b>RFM504</b>	<b>1/200</b>	1/3000	208/230	0.25	CCW	SP	Skel	4.90"	0.8"x1/4"	50415K, 504015K	1
<b>RFB141</b>	<b>1/65</b>	1/2800	115	1.00	CCW	SP	3.3"	6.00"	-	1094073-74, 10100239	2
<b>RFB105</b>	<b>1/50</b>	1/3200	230	0.40	CW	SP	3.3"	2.75"	-	HQ1050144, 1170870	3
<b>RFB68</b>	<b>1/50</b>	1/3000	115	0.90	CW	SP	3.3"	5.25"	-	1006168, c/w gaskets	4
<b>RFB107</b>	<b>1/40</b>	2/3350	208/230	0.30	CW	3/370	3.3"	8.70"	-	1097245 c/w gaskets	5
<b>RFB433</b>	<b>1/35</b>	1/3000	115	1.50	CW	SP	Skel	6.00"	-	1014433, 1014529	6
<b>RFB833</b>	<b>1/30</b>	1/3000	115	1.60	CCW	SP	Skel	6.50"	-	1013833	2
<b>R2609</b>	<b>1/30</b>	1/1550	115	1.21	CW	SP	4.1"	3.00"	2.4"x1/2"	UE009	7
<b>R2612</b>	<b>1/30</b>	1/1550	115	1.21	CCW	SP	4.1"	3.00"	2.4"x1/2"	UE2612	7
<b>RFB145</b>	<b>1/25</b>	1/3450	115	0.70	CW	PSC/INC	3.3"	5.30"	-	1009924, 1009518, 1010527, 1011404, c/w gaskets & coupling	8
<b>RFB134</b>	<b>1/25</b>	1/3000	115	1.50	CCW	SP	3.3"	6.00"	-	1010324, 1708607, 1010975	2
<b>RFB350</b>	<b>1/25</b>	1/3450	115	0.80	CW	5/370	3.3"	7.10"	-	1011350	9
<b>RFB330</b>	<b>1/20</b>	1/3000	115	2.40	CCW	SP	Skel	5.54"	-	330701-701, 329148-701, 1013915	8
<b>R784</b>	<b>1/20</b>	3/1060	208/230	0.40	Rev	4/370	5.5"	3.50"	2.3"x1/2"	130784	10
<b>RFM232</b>	<b>1/16</b>	1/3450	208/230	0.55	CW	PSC/INC	3.3"	5.00"	2.8"x5/16"	1171348, JF1H092N	11
<b>RFM462</b>	<b>1/16</b>	1/3450	460	0.30	CW	PSC/INC	3.3"	4.75"	3.3"x5/16"	1171347	11
<b>RFM9</b>	<b>1/12</b>	1/3000	208/230	1.10	CCW	SP	3.3"	6.40"	2.8"x5/16"	501493	12
<b>RFB9</b>	<b>1/12</b>	1/3000	208/230	1.10	CCW	SP	3.3"	10.00"	-	501493	13
<b>R22576</b>	<b>1/9</b>	2/1060	208/230	0.60	CW	3/370	5.5"	3.80"	2.3"x1/2"	128576	10

Rotation determined opposite shaft end  
Double shaft determined at lead end

Shaft length measured from  
hub face to shaft end



Fig.1



Fig.2



Fig.3



Fig.4



Fig.5



Fig.6



## Ideal

Part #	HP	Spd/RPM	Volts	Amps	Rot	Type	Dia	Body	Shaft	Comment	Fig
<b>R611</b>	<b>1/300</b>	1/1550	115	0.54	CW	SP	Skel	0.50"	2.2"x.181"	Evaporator Motor	1
<b>R108</b>	<b>1/100</b>	1/1550	115	0.55	CCW	SP	3.3"	1.94"	0.7" HUBLESS	Evaporator Motor	2
<b>R123</b>	<b>1/50</b>	1/1550	115	0.60	CW	SP	3.3"	2.44"	0.6" HUBLESS	Evaporator Motor	2
<b>R126</b>	<b>1/50</b>	1/1550	115	0.75	CW	SP	3.3"	2.44"	0.8" HUBLESS	Evaporator Motor	3

## Intercity

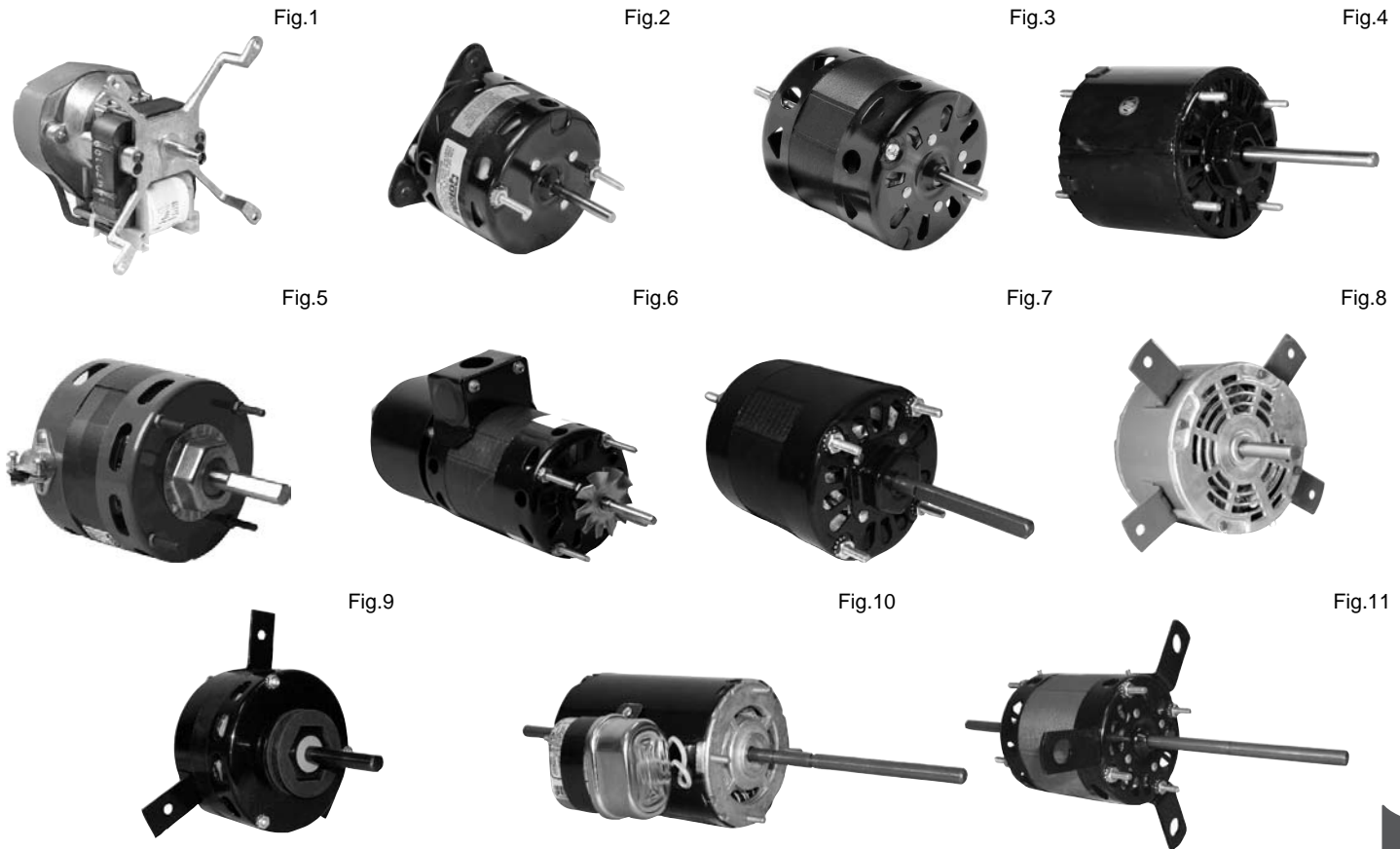
Part #	HP	Spd/RPM	Volts	Amps	Rot	Type	Dia	Body	Shaft	Comment	Fig
<b>R2609</b>	<b>1/30</b>	1/1550	115	1.21	CW	SP	4.1"	3.00"	2.4"x1/2"	UE009	4
<b>R2612</b>	<b>1/30</b>	1/1550	115	1.21	CCW	SP	4.1"	3.00"	2.4"x1/2"	UE2612	4

## Jennair

Part #	HP	Spd/RPM	Volts	Amps	Rot	Type	Dia	Body	Shaft	Comment	Fig
<b>RFB500</b>	<b>1/30</b>	1/2860	115	1.10	CCW	SP	3.3"	5.50"	-	FASCO D500	6

## Johnson, Airease, Magic Chef Furnace

Part #	HP	Spd/RPM	Volts	Amps	Rot	Type	Dia	Body	Shaft	Comment	Fig
<b>RFB6</b>	<b>1/60</b>	1/3000	230	0.55	CW	SP	3.3"	6.10"	-	3855C1, 3855C3, 8973C1, 80280	5



## Keeprite ( ICP ) - continued next page

Part #	HP	Spd/RPM	Volts	Amps	Rot	Type	Dia	Body	Shaft	Comment	Fig
<b>RFM504</b>	<b>1/200</b>	1/3000	208/230	0.25	CCW	SP	Skel	4.90"	0.8"x1/4"	50415K, 504015K	1
<b>R205</b>	<b>1/35</b>	1/1550	115	1.20	CW	SP	3.3"	2.50"	1.8"x1/4"	11796-8	2
<b>R307</b>	<b>1/30</b>	1/3000	115	1.10	CCW	SP	3.3"	3.30"	1.3"x1/4"	85680	3
<b>R2811</b>	<b>1/20</b>	1/1050	115	2.10	CCW	SP	4.1"	2.60"	2.5"x1/2"	28110	3
<b>R1052</b>	<b>1/20</b>	1/1550	115	2.00	CCW	SP	3.3"	3.00"	3.2"x5/16"	1043336	4
<b>R1053</b>	<b>1/20</b>	1/1550	230	1.00	CCW	SP	3.3"	3.00"	3.2"x5/16"	1043766	4
<b>R2817</b>	<b>1/20</b>	1/1550	115	1.60	CCW	SP	4.1"	3.10"	2.8"x1/2"	28175	5
<b>RFM653</b>	<b>1/20</b>	1/3450	230/460	0.40	CW	SP	3.3"	6.30"	2.3"x1/4"	U653	6
<b>R370</b>	<b>1/20</b>	1/1550	115	0.77	CCW	PSC/INC	3.3"	4.09"	2.5"x5/16"	501899,501898, FASCO 7164-1243	7
<b>R371</b>	<b>1/20</b>	1/1550	230	0.36	CW	SP	3.3"	4.09"	2.6"x5/16"	501909	7
<b>R784</b>	<b>1/20</b>	3/1060	208/230	0.40	Rev	4/370	5.5"	3.50"	2.3"x1/2"	130784	8
<b>R2657</b>	<b>1/15</b>	1/1550	230	1.20	CW	SP	4.1"	3.40"	1.8"x3/8"	81335	5
<b>R2658</b>	<b>1/15</b>	1/1550	115	2.30	CW	SP	4.1"	3.40"	1.8"x3/8"	81356	5
<b>R2269</b>	<b>1/15</b>	1/1050	115	2.40	CCW	SP	5.0"	3.00"	3.0"x1/2"	160269	9
<b>R717</b>	<b>1/15</b>	3/1550	115	2.00	CCW	SP	3.3"	3.50"	5.0"x5/16"x3.5"	125039, SM717	10
<b>R729</b>	<b>1/15</b>	3/1550	115	2.00	CCW	SP	3.3"	3.50"	3.5"x5/16"x5.0"	123652, SM704	11
<b>R731</b>	<b>1/15</b>	2/1550	115	2.35	CCW	SP	4.1"	3.10"	2.3"x3/8"x2.3"	122958, 123655, 170621, 71108, 90013, 90248, 96962, SM703	9
<b>R736</b>	<b>1/12</b>	3/1080	115	1.30	CCW	4/370	5.0"	3.50"	1.9"x1/2"x2.7"	130184, SM701, SM715, SM706, SM716, SM721	9

Fig.1



Fig.2



Fig.3



Fig.4

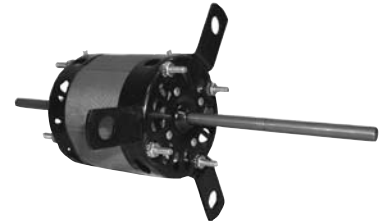


Fig.5



Fig.6



Fig.7



Fig.8



Fig.9



## Keeprite ( ICP ) - continued from previous

Part #	HP	Spd/RPM	Volts	Amps	Rot	Type	Dia	Body	Shaft	Comment	Fig
<b>R701</b>	<b>1/12</b>	1/1550	115	1.30	CCW	PSC/INC	3.3"	4.60"	5.0"x5/16"x2.7"	202807, SM720	1
<b>RFM9</b>	<b>1/12</b>	1/3000	208/230	1.10	CCW	SP	3.3"	6.40"	2.8"x5/16"	501493	2
<b>R22576</b>	<b>1/9</b>	2/1060	208/230	0.60	CW	3/370	5.5"	3.80"	2.3"x1/2"	128576	3
<b>R2423</b>	<b>1/8</b>	3/1330	115	1.80	CW	10/370	5.0"	3.40"	5.0"x1/2"x2.0"	200423, R780	3
<b>R780</b>	<b>1/8</b>	3/1330	115	1.70	CW	10/370	5.5"	3.50"	2.4"x1/2"x5.1"	200423, 71213, 71924, 71925, 88425, 88898, 89395, SM711	4
<b>R785</b>	<b>1/6</b>	1/1060	208/230	0.90	CW	3/370	5.5"	3.30"	2.3"x1/2"	128577	3
<b>R30575</b>	<b>1/6</b>	1/1625	575	0.50	Rev	PSC/INC	5.5"	4.50"	2.2"x1/2"	1042401	5
<b>R31672</b>	<b>1/6</b>	2/1075	208/230	1.50	CW	7.5/370	5.5"	4.00"	3.5"x1/2"	171672, 120240	6
<b>R30409</b>	<b>1/5</b>	1/1550	208/230	1.80	CCW	4/370	5.5"	4.60"	3.0"x1/2"	120409, 1041300	7
<b>R31065</b>	<b>1/5</b>	1/1140	575	0.50	Rev	3 Ph	5.5"	6.30"	2.8"x5/8"	171065	6
<b>R30900</b>	<b>1/2</b>	1/1075	208/230	2.30	CW	7.5/370	5.5"	5.25"	4.0"x5/8"	510900	7
<b>T1536</b>	<b>3/4</b>	1/1140	575	1.50	Rev	3 Ph	5.5"	11.00"	4.0"x5/8"	106670	8
<b>R42464</b>	<b>1</b>	3/1075	208/230 460	5.40	R.P.	12.5/370	5.5"	6.50"	3.5"x5/8"	504464	7
<b>T2538</b>	<b>1</b>	3/1140	208/230 460	4.00	Rev	3 Ph	6.5"	9.10"	5.0"x5/8"	170518, 502595	7
<b>T2540</b>	<b>1</b>	1/1140	575	2.30	Rev	3 Ph	6.5"	9.10"	5.0"x5/8"	170517, KPN502597	7
<b>T1826</b>	<b>1¼</b>	1/1100	208/230	5.00	Rev	3 Ph	6.5"	9.50"	3.0"x5/8"	1043297-001	9
<b>T1946</b>	<b>1¼</b>	1/1100	575	2.00	Rev	3 Ph	6.5"	9.50"	3.0"x5/8"	1043299-001	9
<b>S1454</b>	<b>1¾</b>	1/1075	208/230	5.50	Rev	20/370	6.5"	10.50"	6.0"x5/8"	170619	7



Fig.2

Fig.3



Fig.4



Fig.5

## Kemac

Part #	HP	Spd/RPM	Volts	Amps	Type	Rot	Dia	Body	Shaft	Comment	Fig
<b>R410</b>	<b>1/130</b>	1/1550	115	0.35	SP	CW	3.3"	2.75"	2.0"x5/16"	Space Heater	1

## Kingsman

Part #	Watts	Spd/RPM	Volts	Amps	Type	Rot	Dia	Body	Shaft	Comment	Fig
<b>RB37</b>	<b>42</b>	1/1400	115	0.75	SP	CCW	Skel	10.5"x4.3"x3.6"	-	Z33FK, ZDV3320, ZDV6000	2
<b>RB35</b>	<b>50</b>	1/1250	115	0.86	SP	CW	Skel	12.9"x4.3"x3.6"	-	F35K, FDV350, FDV5000, 4000	3
<b>RB36</b>	<b>50</b>	1/1250	115	0.86	SP	CW	Skel	12.9"x4.3"x3.6"	-	Z36FK, ZDV3600, ZDV4200N	4

## Kysor

Part #	Watt	Spd/RPM	Volts	Amps	Rot	Type	Dia	Body	Shaft	Comment	Fig
<b>R5711</b>	<b>15</b>	1/1550	115	0.37	CW	SP	3.5"	3.50"	-	09A10-054, 09A10-055	5
<b>R5715</b>	<b>15</b>	1/1550	115	0.37	CW	SP	3.5"	3.50"	-	73049	5
<b>R5720</b>	<b>15</b>	1/1550	115	0.37	Rev	SP	3.5"	3.50"	-	09A10-056	5

Rotation determined opposite shaft end  
Double shaft determined at lead end

Shaft length measured from  
hub face to shaft end

Fig.1



Fig.2



Fig.3



Fig.4



Fig.5



## Larkin

Part #	HP	Spd/RPM	Volts	Amps	Rot	Type	Dia	Body	Shaft	Comment	Fig
<b>R394</b>	<b>1/20</b>	1/1550	115	1.60	CCW	SP	3.3"	2.75"	2.5"x5/16"	253-1194	1
<b>R395</b>	<b>1/20</b>	1/1550	208/230	0.81	CCW	SP	3.3"	2.75"	2.5"x5/16"	253-1195	1

## Lau

Part #	HP	Spd/RPM	Volts	Amps	Rot	Type	Dia	Body	Shaft	Comment	Fig
<b>R207</b>	<b>1/70</b>	1/1550	115	0.80	CW	SP	3.3"	2.00"	1.4"x1/4"	Range Hood	2
<b>R408</b>	<b>1/65</b>	2/1550	115	0.72	CCW	SP	3.3"	2.25"	1.6"x1/4"x1.6"	421306-01	3

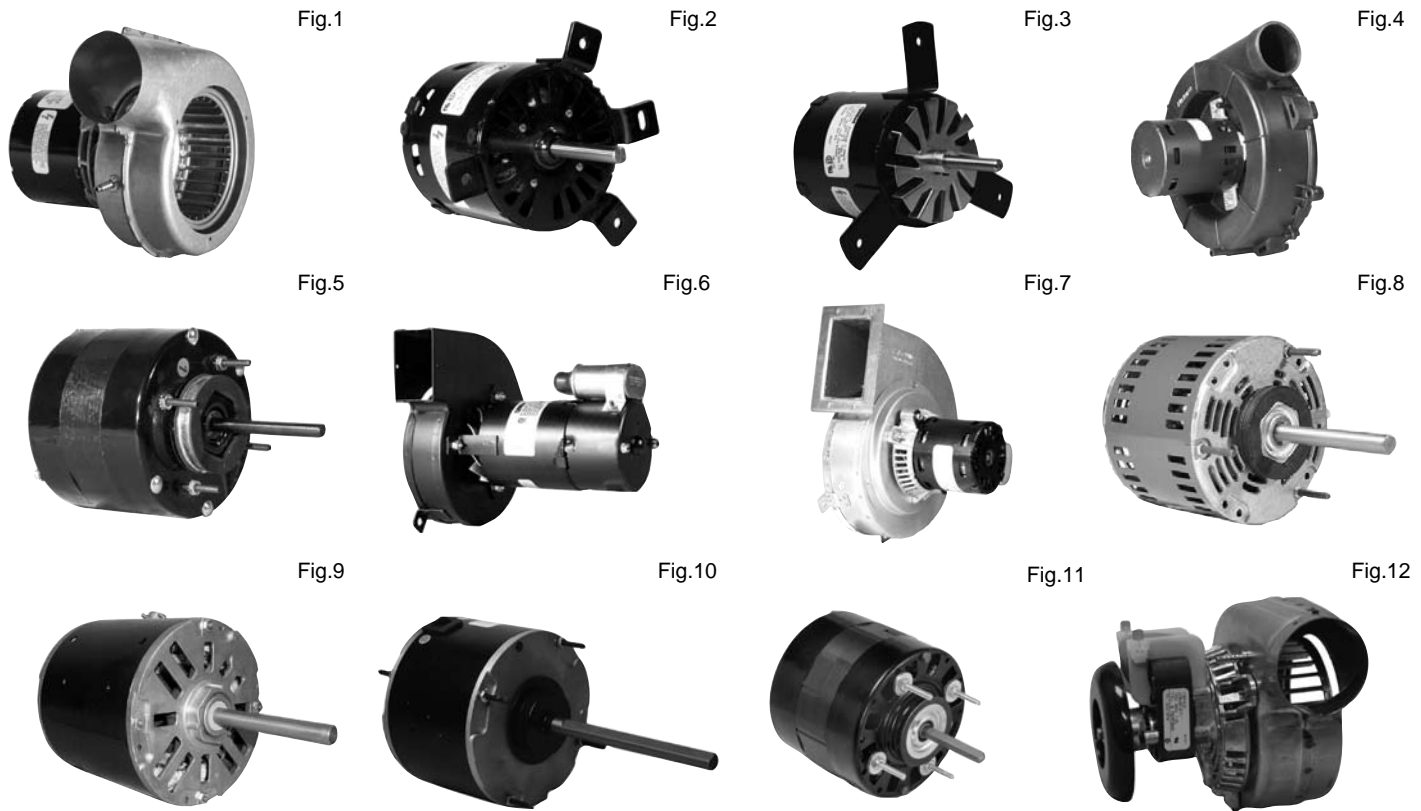
## Lear

Part #	HP	Spd/RPM	Volts	Amps	Rot	Type	Dia	Body	Shaft	Comment	Fig
<b>R108</b>	<b>1/95</b>	1/1550	115	0.55	CCW	SP	3.3"	2.00"	-	Furnace	4

## Leigh

Part #	HP	Spd/RPM	Volts	Amps	Rot	Type	Dia	Body	Shaft	Comment	Fig
<b>R203</b>	<b>1/70</b>	1/1550	115	0.80	CCW	SP	3.3"	2.10"	1.5"x1/4"	59711	5
<b>R220</b>	<b>1/20</b>	1/1550	115	1.60	CCW	SP	3.3"	2.80"	1.2"x5/16"	16603, 97721	5



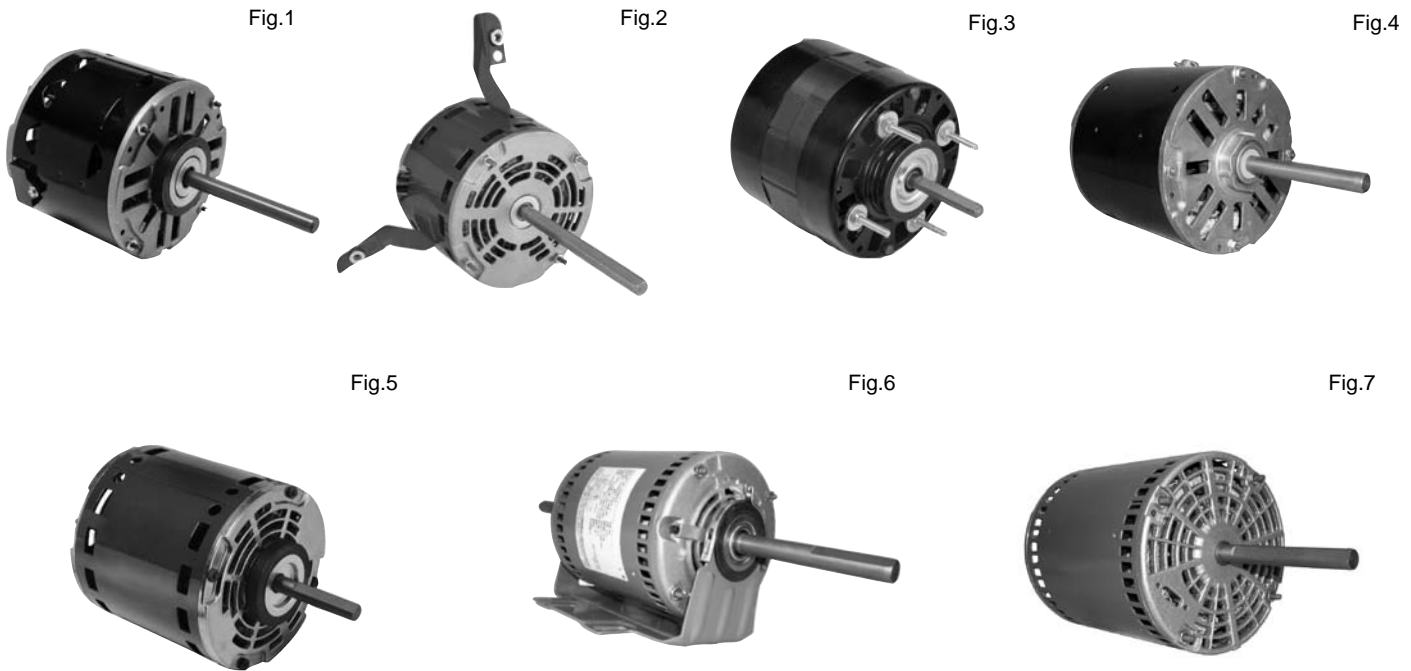


## Lennox

Part #	HP	Spd/RPM	Volts	Amps	Rot	Type	Dia	Body	Shaft	Comment	Fig
<b>RFB135</b>	<b>1/65</b>	1/3000	115	0.70	CW	SP	3.3"	5.50"	-	19J04	1
<b>RFB138</b>	<b>1/60</b>	1/3000	115	0.70	CCW	SP	3.3"	-	-	702186578	1
<b>RFB840</b>	<b>1/50</b>	1/3000	115	1.30	CW	SP	Skel	5.83"	-	88K8401, 85L49	12
<b>RFB164</b>	<b>1/50</b>	1/3000	115	0.80	CW	SP	3.3"	5.80"	-	46K4101	1
<b>RFB43</b>	<b>1/50</b>	1/3000	115	0.80	CW	SP	3.3"	5.80"	-	43K41	1
<b>RFM1198</b>	<b>1/30</b>	1/3200	115	1.50	CCW	SP	3.3"	3.40"	2.2"x5/16"	25J1201	2
<b>RFM890</b>	<b>1/25</b>	1/3200	208/230	0.70	CCW	SP	3.3"	3.29"	2.3"x5/16"	98G8901	3
<b>RFB547</b>	<b>1/20</b>	1/3400	115	1.80	CW	SP	3.3"	5.80"	-	68K21, c/w gaskets	4
<b>R6920</b>	<b>1/15</b>	1/1050	115	3.40	CCW	SP	5.0"	3.90"	3.0"x3/8"	P-8-6920	5
<b>RFB101</b>	<b>1/12</b>	1/3200	208/230	0.50	CCW	PSC/INC	3.3"	8.25"	-	23G8101, 135372, 074, 28G6601	6
<b>RFB701</b>	<b>1/10</b>	1/3200	208/230	0.60	CCW	PSC/INC	3.3"	6.75"	-	98G8701	7
<b>R2368</b>	<b>1/8</b>	4/1030	115	3.50	CCW	4/370	5.0"	4.50"	3.5"x1/2"	P9662	8
<b>R22648</b>	<b>1/6</b>	2/825	208/230	0.90	R.P.	5/370	5.5"	4.50"	6.5"x1/2"	HS16 UNITS	9
<b>R22184</b>	<b>1/6</b>	1/1075	208/230	1.30	Rev	3/370	5.5"	3.80"	6.0"x1/2"	47F9901, 48A11T300	10
<b>R42281</b>	<b>1/4</b>	1/1075	230	2.20	CCW	4/370	5.5"	4.50"	2.5"x1/2"	D814,P-8-2072,S3004, 5KCP39GG124S	11
<b>R42441</b>	<b>1/4</b>	1/1050	208/230	2.50	CCW	PSC/INC	5.5"	4.30"	3.9"x1/2"	Condenser Fan	11
<b>R22474</b>	<b>1/4</b>	2/825	208/230	1.50	R.P.	7.5/370	5.5"	5.10"	6.5"x1/2"	Consender Fan	9
<b>R22442</b>	<b>1/4</b>	2/1075	208/230	1.30	R.P.	5/370	5.5"	4.30"	6.0"x1/2"	Condenser Fan	10
<b>R22432</b>	<b>1/4</b>	2/1075	208/230	1.40	R.P.	5/370	5.5"	4.30"	6.5"x1/2"	Condenser Fan	9
<b>R2390</b>	<b>1/4</b>	3/1075	115	3.80	CW	15/370	5.0"	3.80"	3.5"x1/2"	P-8-9662	11

Rotation determined opposite shaft end  
Double shaft determined at lead end

Shaft length measured from  
hub face to shaft end



## Lennox

Part #	HP	Spd/RPM	Volts	Amps	Rot	Type	Dia	Body	Shaft	Comment	Fig
R42133	1/4	3/1075	208/230	1.50	R.P.	5/370	5.5"	4.30"	6.5"x1/2"	P-8-1988, 3132, 4127, 4545	1
R42449	1/4	3/1075	208/230	1.50	R.P.	7.5/370	5.5"	4.10"	6.0"x1/2"	9" & 10" Blowers	2
R42419	1/4	3/1075	115	3.20	R.P.	7.5/370	5.5"	4.10"	6.0"x1/2"	9" & 10" Blowers	2
R32117	1/3	1/825	230	3.00	Rev	5/370	5.5"	5.50"	5.5"x1/2"	S3050, P-8-2948, 9080, D2817, 5KCP39PG971S	3
R22746	1/3	2/1075	208/230	2.10	R.P.	7.5/370	5.5"	4.80"	6.5"x1/2"	Condenser Fan	4
R42349	1/3	3/1075	208/230	2.10	R.P.	7.5/370	5.5"	4.60"	6.0"x1/2"	9" & 10" Blowers	2
R42319	1/3	3/1075	115	4.20	R.P.	7.5/370	5.5"	4.60"	6.0"x1/2"	9" & 10" Blowers	2
R42310	1/3	4/1075	115	6.40	Rev	5/370	5.5"	4.80"	6.0"x1/2"	P-8-7505, 9450, 41A4201	3
DD-035	1/3	4/1075	115	4.80	Rev	PSC/INC	5.5"	4.25"	4.0"x1/2"	P-8-7505	2
UE-117	1/3	1/1075	208/230	2.00	Rev	10/370	5.5"	6.00"	6.0"x1/2"	S3050, P-8-9662	4
R22242	1/2	2/1075	208/230	2.50	R.P.	10/370	5.5"	5.10"	6.5"x1/2"	Condenser Fan	4
R42249	1/2	3/1075	208/230	2.70	R.P.	10/370	5.5"	5.10"	6.0"x1/2"	9" & 10" Blowers	2
R32730	3/4	2/1075	208/230	3.50	Rev	15/370	5.5"	5.50"	6.5"x1/2"	Condenser Fan	4
R42043	3/4	3/1075	208/230	4.10	R.P.	10/370	5.5"	5.30"	6.0"x1/2"	9" & 10" Blowers	2
R42013	3/4	3/1075	115	7.90	R.P.	15/370	5.5"	5.30"	6.0"x1/2"	9" & 10" Blowers	1
UE-9405	3/4	5/1075	115	10.40	CCW	40/370	5.5"	5.25"	3.0"x1/2"	20F0101, 58H2201, EMK55HXWNZ7057	4
UE-9404	3/4	5/1075	230	5.60	CW	20/370	5.5"	7.75"	3.0"x5/8"	9404 P-8-8711, EMK55HXKGN-3291, 58H2201 9406 28F01011, EMK55HXWNZ7057, 58H2201	4
R43520	3/4	3/1075	460	2.00	CCW	20/370	5.5"	5.53"	2.5"x1/2"	43G5201	5
R52820	3/4	3/1075	208/230	4.20	CW	10/370	5.5"	7.80"	5.3"x5/8"x4.8"	31C8201	6
R32050	3/4	3/1025	575	1.65	Rev	15/370	5.5"	6.50"	4.0"x1/2"	Commercial Rooftop	7
R32051	3/4	3/1075	460	2.15	Rev	15/370	5.5"	6.63"	4.0"x1/2"	43G52	7

Fig.1



Fig.2



Fig.3



Fig.4



Fig.5



## Liebert

Part #	HP	Spd/RPM	Volts	Amps	Rot	Type	Dia	Body	Shaft	Comment	Fig
<b>T2535</b>	<b>3/4</b>	1/1140	575	1.40	Rev	3 Ph	6.5"	8.10"	3.0"x5/8"	1C16992P1	1
<b>T2531</b>	<b>3/4</b>	1/1100	208/230 460	4.00	Rev	3 Ph	6.5"	8.10"	3.0"x5/8"	1C16992P1	1

## Life Breath - Nutech

Part #	HP	Spd/RPM	Volts	Amps	Rot	Type	Dia	Body	Shaft	Comment	Fig
<b>R465</b>	<b>1/15</b>	3/1550	115	2.25	CCW	SP	3.3"	4.00"	2.3"x5/16"x2.3	23202	2

## Lincoln

Part #	HP	Spd/RPM	Volts	Amps	Rot	Type	Dia	Body	Shaft	Comment	Fig
<b>R213</b>	<b>1/25</b>	1/1550	115	1.40	CCW	SP	3.3"	3.10"	1.7"x5/16"	CM88953	3

## Lord Burnham

Part #	HP	Spd/RPM	Volts	Amps	Rot	Type	Dia	Body	Shaft	Comment	Fig
<b>S1100</b>	<b>1/3</b>	1/1625	115	3.80	Rev	PSC/INC	5.5"	8.50"	1.9"x5/8"	Louwer Fans	4

## Magic Chef

Part #	HP	Spd/RPM	Volts	Amps	Rot	Type	Dia	Body	Shaft	Comment	Fig
<b>R2691</b>	<b>1/5</b>	1/1075	208/230	1.50	CW	5/370	5.0"	4.00"	3.9"x1/2"	35035B001	5

Rotation determined opposite shaft end  
Double shaft determined at lead end

Shaft length measured from  
hub face to shaft end

Fig.1

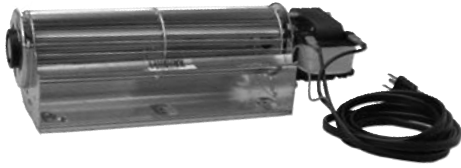


Fig.2

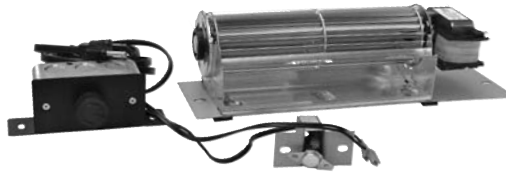


Fig.3



Fig.4



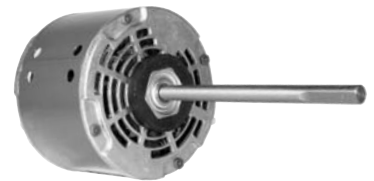
Fig.5



Fig.6



Fig.7



## Majestic

Part #	Watts	Spd/RPM	Volts	Amps	Rot	Type	Dia	Body	Shaft	Comment	Fig
<b>RB12</b>	<b>50</b>	1/1250	115	0.86	CW	SP	Skel	12.9"x4.3"x3.6"	-	FK12	1
<b>RB64</b>	<b>50</b>	1/1200	115	0.86	CW	SP	Skel	12.9"x4.3"x3.6"	-	FA20, FK24, RHE32, 18L46, HE30, HE32	1
<b>RB65</b>	<b>50</b>	1/1250	115	0.86	CW	SP	Skel	12.9"x4.3"x3.6"	-	FK24, 33DBVRRN, DBT33, 36, 39, DBR33, 36, 39	2
<b>RB63</b>	<b>50</b>	1/1250	115	0.86	CW	SP	Skel	12.9"x4.3"x3.6"	-	RB65 blower & base only	2
<b>RB130</b>	<b>53</b>	1/2800	115	0.92	CW	SP	Skel	8"x4.56"x4.32"	-	FK30, 52425	3

## Mark Hot

Part #	HP	Spd/RPM	Volts	Amps	Rot	Type	Dia	Body	Shaft	Comment	Fig
<b>R350</b>	<b>1/55</b>	2/1050	115	1.20	CW	SP	3.3"	2.85"	1.5"x5/16"	5AA1A3-P4S	4
<b>R133</b>	<b>1/40</b>	2/1550	115	1.00	CCW	SP	3.3"	2.60"	-	5DH1A1-P456	5

## McQuay Remington

Part #	HP	Spd/RPM	Volts	Amps	Rot	Type	Dia	Body	Shaft	Comment	Fig
<b>R52430</b>	<b>1/4</b>	3/1060	208/230	1.50	CW	3/370	5.5"	4.50"	4.1"x1/2"x4.7"	24303, KCP39KGV3735	6
<b>R10810</b>	<b>1/3</b>	1/1625	208/230	2.70	CW	3/370	5.5"	4.50"	7.5"x1/2"	10810, CP39GG1964BS	7

Fig.1



Fig.2



Fig.3



Fig.4



Fig.5

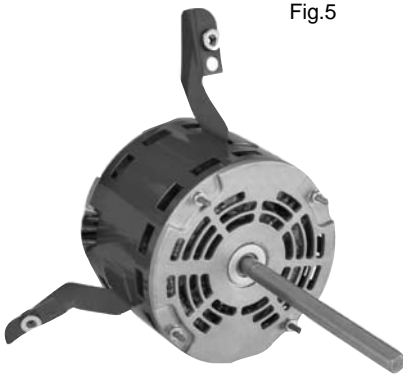


Fig.6



Fig.7



Fig.8



## Miami Carey

Part #	HP	Spd/RPM	Volts	Amps	Rot	Type	Dia	Body	Shaft	Comment	Fig
R206	1/80	2/1550	115	0.56	CW	SP	3.3"	2.09"	1.4"x1/4"	Vent Fan	1
R203	1/70	1/1550	115	0.80	CCW	SP	3.3"	2.10"	1.5"x1/4"	1V2430	2
R214	1/50	1/2700	115	0.76	CW	SP	3.3"	2.80"	1.5"x1/4"	Vent Fan	1
R200	1/50	2/3000	115	1.00	CCW	SP	3.3"	2.60"	1.2"x1/4"	Vent Fan	1
R610	1/50	1/2400	115	1.00	CW	SP	Skel	0.90"	1.2"x7/32"	1V4217	3
R209	1/45	1/1550	115	0.87	CW	SP	3.3"	2.30"	1.5"x5/16"	1V3117, 39328	1
R220	1/20	1/1550	115	1.60	CCW	SP	3.3"	2.80"	1.2"x5/16"	1V2429	1

## Miller Furnace

Part #	HP	Spd/RPM	Volts	Amps	Rot	Type	Dia	Body	Shaft	Comment	Fig
R2326	1/7	1/1050	115	4.70	CCW	SP	5.0"	3.30"	3.0"x1/2"	U.E. 326	4
R2393	1/5	1/1050	115	6.00	CCW	SP	5.0"	3.80"	5.8"x1/2"	OML6433	5

## Montego, Selkirk

Part #	HP	Spd/RPM	Volts	Amps	Rot	Type	Dia	Body	Shaft	Comment	Fig
RF100-2	1/167	2/3000	115	0.50	CCW	SP	Skel	2.75"	-	2811-581-001, EF100, RF100, 2811-581-002, EF100-2	6

## Moyer & Diebel

Part #	HP	Spd/RPM	Volts	Amps	Rot	Type	Dia	Body	Shaft	Comment	Fig
R320	1/100	1/1550	115	0.47	CW	SP	3.3"	2.10"	1.3"x1/4"	EM12	7
R307	1/30	1/3000	115	1.10	CCW	SP	3.3"	3.30"	1.3"x1/4"	Furnace Blower	8

Rotation determined opposite shaft end  
Double shaft determined at lead end

Shaft length measured from  
hub face to shaft end



Fig.1



Fig.2

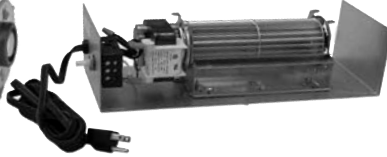


Fig.3



Fig.4



Fig.5



Fig.6



Fig.7



Fig.8



## Napoleon

Part #	Watts	Spd/RPM	Volts	Amps	Rot	Type	Dia	Body	Shaft	Comment	Fig
<b>RB61</b>	<b>42</b>	1/1400	115	0.75	CCW	SP	Skel	10.5"x4.3"x3.6"	-	GZ552	1
<b>RB62</b>	<b>42</b>	1/1400	115	0.75	CCW	SP	Skel	14.1"x5.25"x3.5"	-	EP62-1	2
<b>RB58</b>	<b>42</b>	1/1400	115	0.75	CCW	SP	Skel	10.5"x4.3"x3.6"	-	GZ550, BCDV36NTR, GD36NTR,	3
<b>RB59</b>	<b>42</b>	1/1400	115	0.75	CCW	SP	Skel	10.5"x4.3"x3.6"	-	RB58 Blower & Base only	3

## Newmac

Part #	HP	Spd/RPM	Volts	Amps	Rot	Type	Dia	Body	Shaft	Comment	Fig
<b>R403</b>	<b>1/145</b>	1/1550	115	0.33	CW	SP	3.3"	2.75"	1.5"1/4"	Heaters	4
<b>RB33</b>	<b>1/55</b>	1/3200	115	0.88	CW	SP	3.3"	6.60"	-	2040001	5

## Nordica

Part #	HP	Spd/RPM	Volts	Amps	Type	Rot	Dia	Body	Shaft	Comment	Fig
<b>RB513</b>	-	1/2600	115	1.25	SP	CW	Skel	17.6"x4.25"x3"	-	J513	6
<b>RB571</b>	-	1/1800	115	0.38	SP	CCW	Skel	9.8"x3.7"x3.2"	-	J571	7
<b>RB3</b>	<b>1/50</b>	1/3000	115	0.80	SP	CW	3.3"	5.50"	-	UE383, B24220	8

OEM

Fig.1



Fig.2



Fig.3



Fig.4



Fig.5

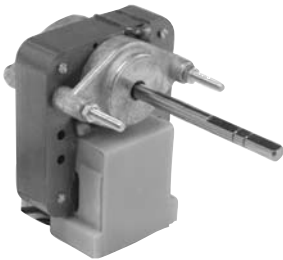


Fig.6



Fig.7

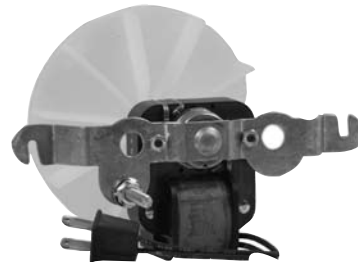


Fig.8



## Nordyne, Frigidaire, Miller

Part #	HP	Spd/RPM	Volts	Amps	Rot	Type	Dia	Body	Shaft	Comment	Fig
RFB903	1/45	1/3000	115	1.10	CCW	SP	3.3"	5.60"	-	902977	1
RFB902	1/19	1/3450	115	0.70	CCW	PSC/INC	3.3"	5.50"	-	903111	2

## Nutech

Part #	HP	Spd/RPM	Volts	Amps	Rot	Type	Dia	Body	Shaft	Comment	Fig
R465	1/15	3/1550	115	2.30	CCW	SP	3.3"	4.00"	2.3"x5/16"x2.1"	23202	3
R2655	1/12	1/1550	115	1.10	CCW	5/370	5.0"	3.00"	2.9"x1/2"x2.8"	AO812B2355	4
R2324	1/12	1/1550	115	1.40	CCW	PSC/INC	5.0"	3.75"	2.9"x3/8"x2.6"	23-204	4

## Nutone

Part #	HP	Spd/RPM	Volts	Amps	Rot	Type	Dia	Body	Shaft	Comment	Fig
R613	1/260	1/1600	115	0.55	CW	SP	Skel	0.65"	2.5"x7/32"	64620	5
R506	1/240	1/1400	115	0.43	CW	SP	3.3"	1.90"	2.0"x1/4"	80725	6
R3100	1/130	1/3000	115	0.50	CW	SP	Skel	0.65"	1.7"x7/32"	C65878	5
RB11	1/130	1/3000	115	0.65	CW	SP	Skel	0.60"	1.7"x7/32"	118445, 208370856	7
R311	1/100	1/1550	115	0.47	CW	SP	3.3"	2.09"	1.2"x5/16"	81176	8
R315	1/90	1/1550	115	0.53	CCW	SP	3.3"	2.09"	1.2"x1/4"	82598, 82599, 65070	8
R604	1/85	1/2700	115	0.92	CW	SP	Skel	0.65"	1.2"x0.181"	Vent Fan	5

Rotation determined opposite shaft end  
Double shaft determined at lead end

Shaft length measured from  
hub face to shaft end

Fig.1

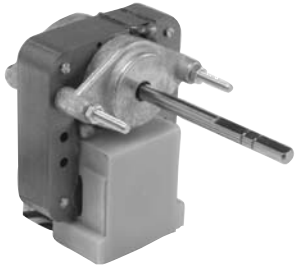


Fig.2



Fig.3



Fig.4

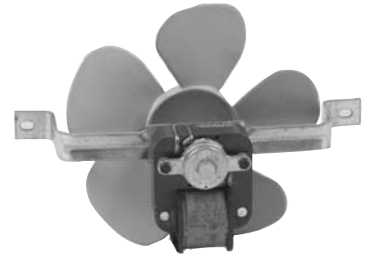


Fig.5



Fig.6



Fig.7



## Nutone

Part #	HP	Spd/RPM	Volts	Amps	Rot	Type	Dia	Body	Shaft	Comment	Fig
R3101	1/80	2/3000	115	0.70	CCW	SP	Skel	0.70"	1.6"x7/32"	C52367, C27987	1
R232	1/70	2/1550	115	0.70	CCW	SP	3.3"	2.50"	1.3"x1/4"	80215, 80675, 26733	2
R207	1/70	1/1550	115	0.80	CW	SP	3.3"	2.00"	1.5"x1/4"	80100, 23405, 23388	2
R3103	1/70	1/3000	115	0.75	CW	SP	Skel	0.80"	2.4"x7/32"	C63676, C66582, C68626	1
R203	1/70	1/1550	115	0.80	CCW	SP	3.3"	2.10"	1.5"x1/4"	Vent Fan	2
R317	1/65	1/1550	115	0.60	CCW	SP	3.3"	2.30"	1.6"x1/4"	65072	3
R305	1/60	1/2800	115	0.85	CW	SP	3.3"	2.30"	1.5"x1/4"	80695	3
RB10	1/60	1/2400	115	1.00	CW	SP	Skel	0.90"	1.2"x7/32"	279932	4
R610	1/60	2/2400	115	1.00	CW	SP	Skel	0.90"	1.2"x7/32"	27898, 64586, 64964, 67846, 81734, 81795, 81798, 81800	1
R201	1/50	1/1430	115	0.85	CW	SP	3.3"	2.20"	2.3"x1/4"	18692	2
R319	1/50	1/1430	115	0.90	CCW	SP	3.3"	2.10"	2.2"x1/4"	Vent Fan	3
R209	1/45	1/1550	115	0.87	CW	SP	3.3"	2.30"	1.5"x5/16"	80101, 80230, 80469	2
R233	1/45	2/3000	115	0.84	CCW	SP	3.3"	2.50"	1.8"x1/4"	81894, 22721	2
R304	1/40	1/1550	115	0.89	CW	SP	3.3"	2.50"	1.5"x1/4"	Vent Fan	3
R202	1/40	2/1550	115	1.00	CW	SP	3.3"	2.50"	1.3"x1/4"	81487, 82879	2
R470	1/25	1/1550	115	1.40	CW	SP	3.3"	3.00"	3.8"x5/16"x3.7"	Vent Fan	5
R219	1/20	1/1550	115	1.60	CW	SP	3.3"	2.80"	2.2"x5/16"	80405, 80747	2
R440	1/20	1/1550	115	1.60	CW	SP	3.3"	3.15"	3.8"x5/16"x3.8"	81905, 807834, 26757	6
R355	1/15	1/1550	115	2.20	CW	SP	3.3"	3.11"	1.9"x5/16"	81918	7

Fig.1



Fig.2



Fig.3



Fig.4



Fig.5

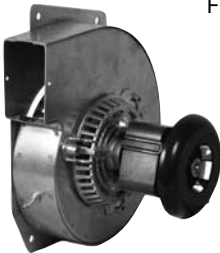


Fig.6

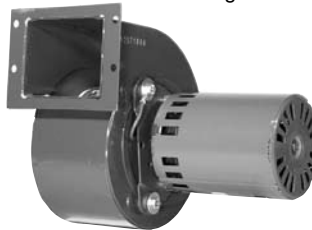


Fig.7

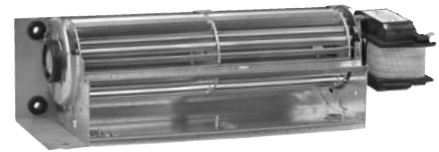


Fig.8



Fig.9



## Olsen

Part #	HP	Spd/RPM	Volts	Amps	Rot	Type	Dia	Body	Shaft	Comment	Fig
RFB181	1/54	1/3200	115	1.20	CW	SP	3.3"	6.60"	-	18102, c/w gaskets	1
RFB200	1/54	1/3200	115	1.20	CCW	SP	3.3"	6.60"	-	20082, 11051403	1
RFB090	1/50	1/3000	115	1.10	CCW	SP	3.3"	-	-	26986, 26987	2
RFB140	1/49	1/3400	115	1.40	CCW	SP	3.3"	5.60"	-	4246100, JAIN107NS	3
RFB112	1/45	1/3000	115	1.30	CCW	SP	3.3"	6.00"	-	26986, 26987, 28436	4
RFB111	1/25	1/3000	115	1.10	CCW	SP	3.3"	-	-	26607, c/w, gaskets & mounting plates	4
RFB467	1/30	1/3000	115	1.70	CW	SP	Skel	5.94"	-	29467	5
RFB203	1/20	1/3000	230	0.90	CCW	SP	3.3"	8.50"	-	3255A	6
RFB130	1/18	1/3450	115	0.70	CCW	PSC/INC	3.3"	5.00"	-	4246101	3

## Osburn

Part #	Watts	Spd/RPM	Volts	Amps	Rot	Type	Dia	Body	Shaft	Comment	Fig
RB108	50	1/1250	115	0.86	CW	SP	Skel	12.9"x4.3"x3.6"	-	KA108	7
RB006	81	2/2800	115	1.40	CCW	SP	skel	12.8"x4.6"x4.3"	-	FD006-1600, 1800, 2200, 2400	8

## Pacific Energy Esteem

Part #	Watts	Spd/RPM	Volts	Amps	Rot	Type	Dia	Body	Shaft	Comment	Fig
RB50	53	1/2400	115	0.92	CW	SP	Skel	12.8"x4.6"x4.3"	-	5053-947, MNB.BLOW, ENCD.BLOW	9

Rotation determined opposite shaft end  
Double shaft determined at lead end

Shaft length measured from  
hub face to shaft end

Fig.1

Fig.2

Fig.3

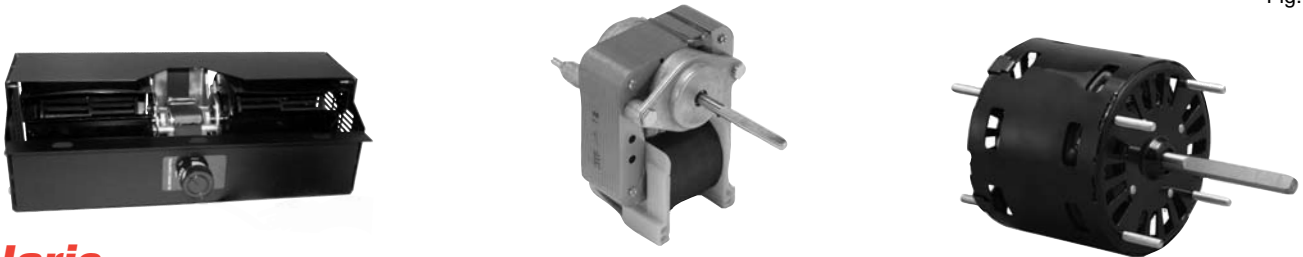
Fig.4



Fig.5

Fig.6

Fig.7



## Polaris

Part #	Watts	Spd/RPM	Volts	Amps	Rot	Type	Dia	Body	Shaft	Comment	Fig
<b>RB944</b>	<b>17</b>	1/2900	115	0.77	CCW	SP		10.3"x3.6"x3.6"	-	PG200	1

## Prestcold

Part #	HP	Spd/RPM	Volts	Amps	Rot	Type	Dia	Body	Shaft	Comment	Fig
<b>R5421</b>	<b>9W</b>	1/1550	208/230	0.29	CW	SP	3.5"	2.80"	HUBLESS	401-0030-01	2
<b>R5411</b>	<b>9W</b>	1/1550	115	0.58	CW	SP	3.5"	2.80"	HUBLESS	401-0031-01	2
<b>R5821</b>	<b>16W</b>	1/1550	208/230	0.45	CW	SP	3.5"	3.10"	HUBLESS	401-0033-01	2
<b>R5811</b>	<b>16W</b>	1/1550	115	0.80	CW	SP	3.5"	3.10"	HUBLESS	401-0032-01	2
<b>R2942</b>	<b>1/10</b>	1/1550	115/208 /230	4.00	CCW	SP	5.0"	4.80"	2.3"x3/8"	401-0052-01	3
<b>R32476</b>	<b>1/3</b>	1/825	208/230	2.40	Rev	5/370	5.5"	5.30"	6.0"x1/2"	401-0048-01	4

## QBD

Part #	HP	Spd/RPM	Volts	Amps	Rot	Type	Dia	Body	Shaft	Comment	Fig
<b>R621</b>	<b>1/187</b>	1/3000	115	0.40	CW	SP	Skel	0.55"	1.29"x0.1811"	QBD 47-0410-001, -022, -015, IN DC5 & DC7	6

## Quadra Fire

Part #	Watts	Spd/RPM	Volts	Amps	Rot	Type	Dia	Body	Shaft	Comment	Fig
<b>RB83</b>	<b>53</b>	1/2400	115	0.92	CCW	SP	Skel	12.8"x4.6"x4.3"	-	Free Standindg Wood Stove Blower	5

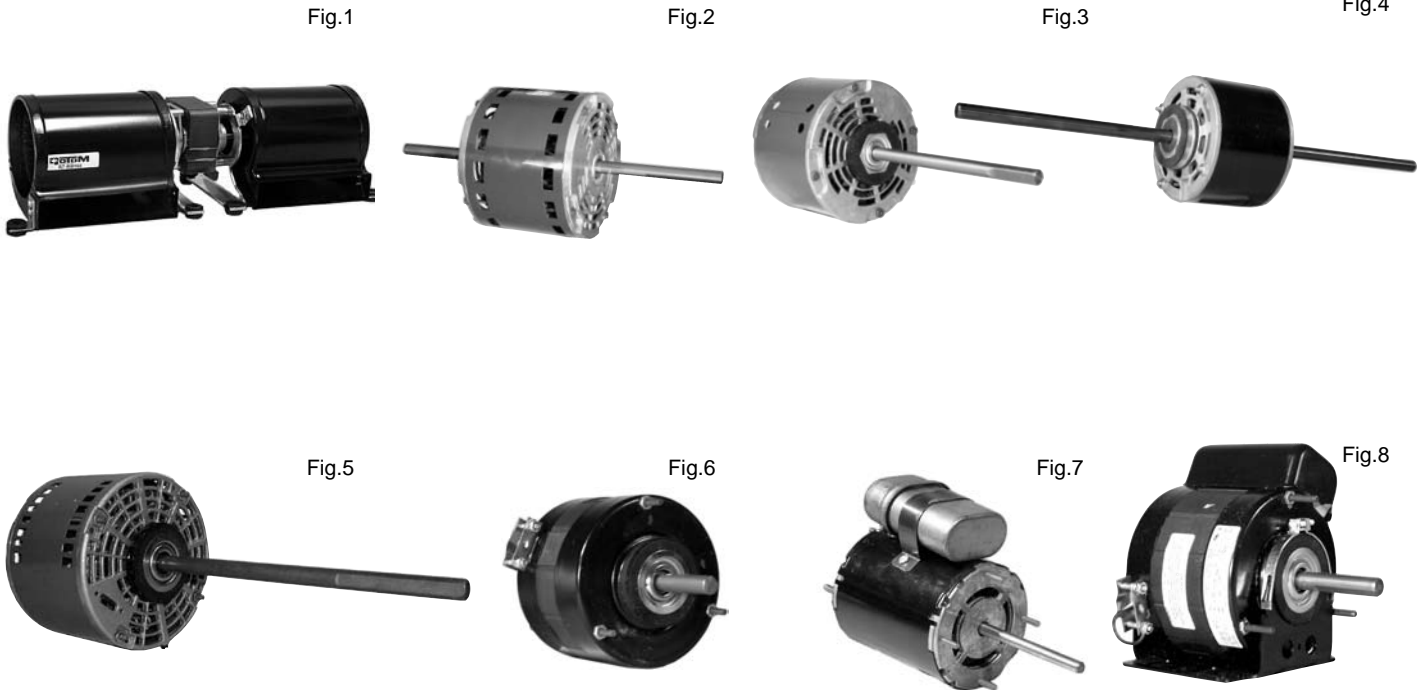
## Rapid Refrigeration

Part #	HP	Spd/RPM	Volts	Amps	Rot	Type	Dia	Body	Shaft	Comment	Fig
<b>R602</b>	<b>1/125</b>	1/3000	115	0.50	CW	SP	Skel	0.65"	1.4"x0.181"	5A140-93	6

## Ref Plus

Part #	HP	Spd/RPM	Volts	Amps	Rot	Type	Dia	Body	Shaft	Comment	Fig
<b>R368</b>	<b>1/20</b>	1/1550	115	2.00	CW	SP	3.3"	2.75"	2.5"x5/16"	RMT0011, JA2N267N, 7173-1539	7
<b>R369</b>	<b>1/20</b>	1/1550	208/230	0.90	CW	SP	3.3"	2.75"	2.5"x5/16"	RMT0012, JA2N0268N, 7173-1538	7





## Regency

Part #	Spd/RPM	Volts	Amps	Type	Rot	Dia	Body	Shaft	Comment	Fig
<b>RB166</b>	<b>53</b>	1/2400	CCW	0.92	SP	CCW	Skel 12.8"x4.6"x4.3"	-	910-33/P, -142/P, I1100, I2100, I3100	1
<b>RB167</b>	<b>53</b>	2/2800	CCW	0.92	SP	CCW	Skel 12.8"x4.6"x4.3"	-	910-157/P, F1100, F2100, F2400, F2400M, F3100	1

## Remington - McQuay

Part #	HP	Spd/RPM	Volts	Amps	Rot	Type	Dia	Body	Shaft	Comment	Fig
<b>R52430</b>	<b>1/4</b>	3/1060	208/230	1.50	CW	7.5/370	5.5"	4.50"	4.1"x1/2"x4.7"	24303, 5KCP39KGV3735	2
<b>R10810</b>	<b>1/3</b>	1/1625	208/230	2.70	CW	3/370	5.5"	4.50"	7.5"x1/2"	10810, 5KCP39GG1964BS	3

## Remington Singer

Part #	HP	Spd/RPM	Volts	Amps	Rot	Type	Dia	Body	Shaft	Comment	Fig
<b>R2675</b>	<b>1/30</b>	4/1075	208/230	0.40	CCW	2/370	4.75"	3.80"	7.7"x1/2"x7.7"	02024224	4
<b>R139</b>	<b>1/8</b>	1/1075	208/230	2.20	CW	4/5/370	5.5"	4.00"	9.0"x1/2"	21662R, 74007	5

## Reversomatic ( see Page 8)

## Reznor

Part #	HP	Spd/RPM	Volts	Amps	Rot	Type	Dia	Body	Shaft	Comment	Fig
<b>R2360</b>	<b>1/15</b>	1/1050	115	2.20	CCW	SP	5.0"	3.30"	2.8"x1/2"	Unit Heater	6
<b>RFM78</b>	<b>1/10</b>	1/3000	115/230	1.30	Rev	PSC/INC	3.3"	4.10"	3.3"x5/16"	43846, 43424	7
<b>R2615</b>	<b>1/8</b>	1/1050	115	3.90	CCW	SP	5.0"	3.90"	2.7"x1/2"	Unit Heater	6
<b>R12177</b>	<b>1/6</b>	1/1075	115	2.20	CCW	PSC/INC	5.5"	4.60"	2.4"x1/2"	Unit Heater	8
<b>R12486</b>	<b>1/4</b>	1/1075	115	4.00	CCW	PSC/ INC	5.5"	4.60"	3.0"x1/2"	Unit Heater	8

Rotation determined opposite shaft end  
Double shaft determined at lead end

Shaft length measured from  
hub face to shaft end

Fig.1

Fig.2

Fig.3

Fig.4

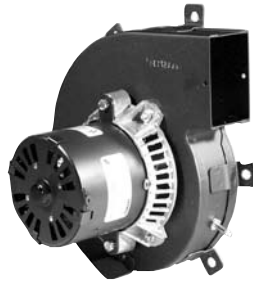
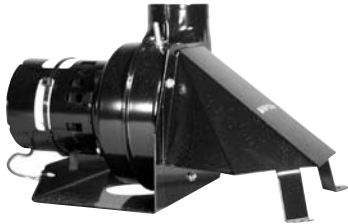


Fig.5

Fig.6

Fig.7

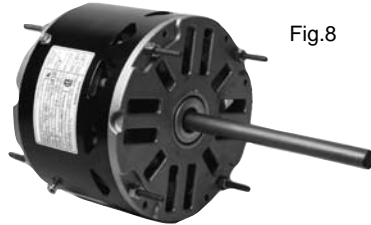


Fig.8

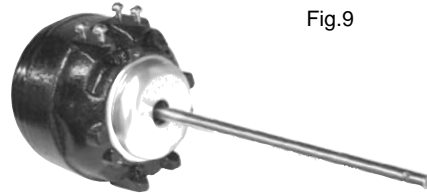


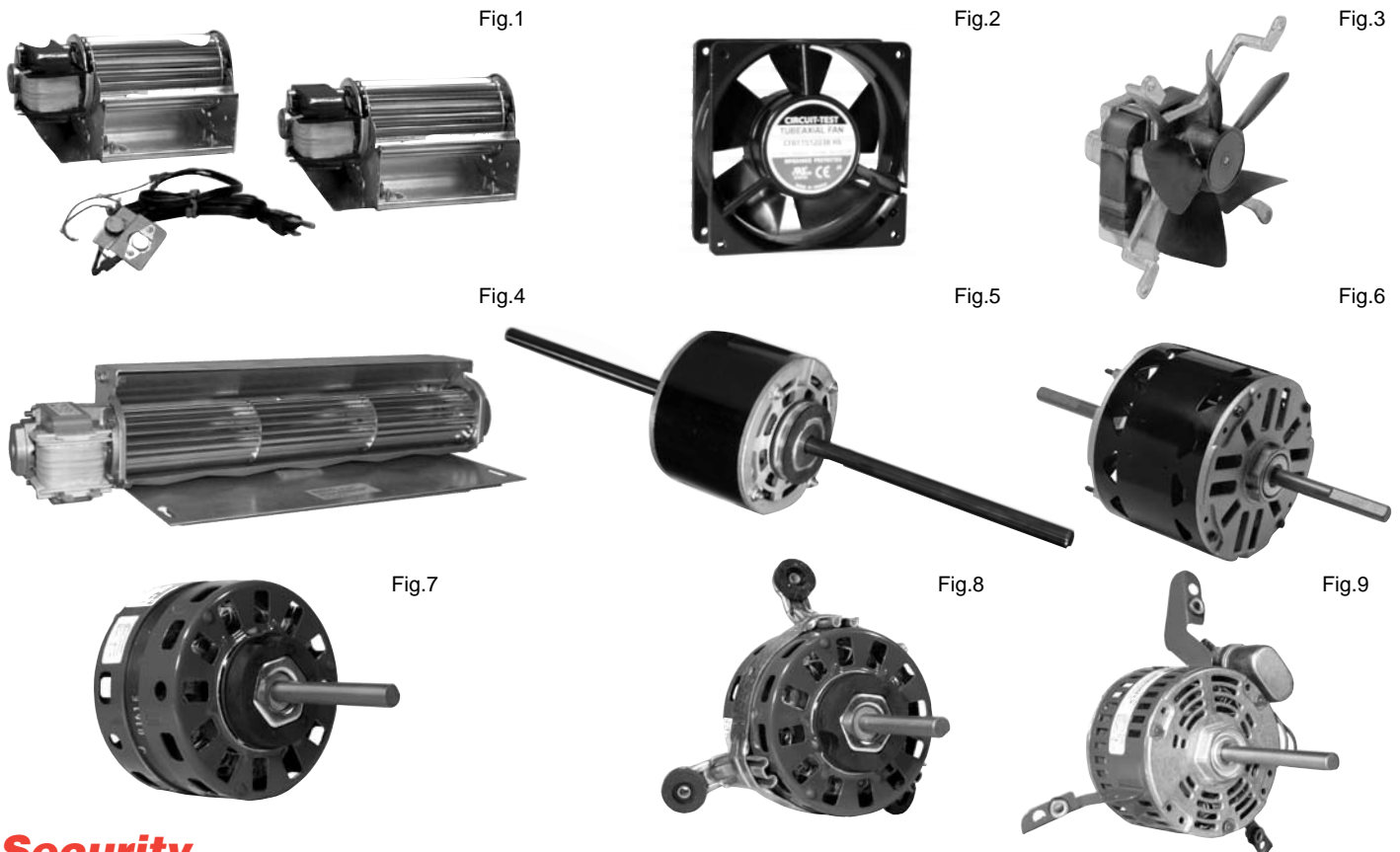
Fig.9

## Rheem Ruud

Part #	HP	Spd/RPM	Volts	Amps	Rot	Type	Dia	Body	Shaft	Comment	Fig
<b>RFB139</b>	<b>1/55</b>	1/2970	115	0.95	CCW	SP	3.3"	11.00"	-	SP11608	1
<b>RFB090</b>	<b>1/50</b>	1/3000	115	1.10	CCW	SP	3.3"	5.00"	-	70-214196-01, c/w gaskets	2
<b>RFB214</b>	<b>1/50</b>	1/3000	115	1.10	CW	SP	3.3"	5.63"	-	70-214196-83, A079, c/w gaskets	2
<b>RFB107</b>	<b>1/40</b>	2/3350	208 /230	0.30	CW	3/370	3.3"	8.70"	-	1070770, 101070, 107701, c/w gasket	3
<b>RFB189</b>	<b>1/40</b>	1/3000	115	1.00	CCW	SP	3.3"	5.50"	-	09-189	4
<b>RFB142</b>	<b>1/25</b>	1/3450	115	0.70	CCW	INC	3.3"	6.00"	-	70-22162-81	5
<b>RFB241</b>	<b>1/20</b>	1/3400	115	1.71	CCW	SP	Skel	6.30"	-	70-24157-03, 70-22838-02	6
<b>RFB136</b>	<b>1/20</b>	1/3450	115	0.75	CCW	INC	3.3"	6.25"	-	70-24033-01, 7062-3861	5
<b>R22847</b>	<b>1/8</b>	1/825	208/230	0.70	R.P.	5/370	5.5"	4.20"	4.8"×1/2"	21267-01, 02, 20760-1, 20763-01	7
<b>R22645</b>	<b>1/8</b>	1/825	208/230	0.90	Rev	5/370	5.5"	4.30"	4.8"×1/2"	21276-01, -02, 512076-01	7
<b>R22170</b>	<b>1/5</b>	1/1075	208/230	1.60	Rev	5/370	5.5"	3.80"	6.0"×1/2"	D743, K136, 442	7
<b>R22437</b>	<b>1/4</b>	1/1075	208/230	1.60	R.P.	7.5/370	5.5"	3.8"	5.5"×1/2"	20761-01, 21185-01	8

## Scotsman

Part #	HP	Spd/RPM	Volts	Amps	Rot	Type	Dia	Body	Shaft	Comment	Fig
<b>R4119</b>	<b>15W</b>	1/1550	115	0.60	CW	SP	3.9"	3.50"	5.0"×5/16"	Agitator	9



## Security

Part #	Watts	Spd/RPM	Volts	Amps	Type	Rot	Dia	Body	Shaft	Comment	Fig
<b>RB267</b>	<b>35</b>	1/1800	115	0.75	SP	CCW	Skel	12.9"x4.3"x3.6"	-	UZY	1
<b>RB67</b>	<b>35</b>	1/1800	115	0.75	SP	CCW	Skel	12.9"x4.3"x3.6"	-	RB267 BLOWER ONLY	1
<b>RF235</b>	<b>22</b>	1/3100	115	-	SP	-	Axial	-	-	UZY Old BIS1 & BIS2	2

## Selkirk Metalbestos

Part #	HP	Spd/RPM	Volts	Amps	Rot	Type	Dia	Body	Shaft	Comment	Fig
<b>RB89</b>	<b>23</b>	1/2050	115	0.46	CW	SP	Skel	10.4"x3.25"x2.8"	-	45mm Blower Kit	4
<b>RB85</b>	<b>23</b>	1/2050	115	0.46	CW	SP	Skel	10.4"x3.25"x2.8"	-	RB89 Blower Only	4
<b>RB88</b>	<b>35</b>	1/1900	115	0.60	CW	SP	Skel	15.4"x3.25"x2.8"	-	45mm Blower Kit	4
<b>RB87</b>	<b>35</b>	1/1900	115	0.60	CW	SP	Skel	15.4"x3.25"x2.8"	-	RB88 Blower Only	4
<b>RF100-2</b>	<b>1/155</b>	1/3000	115	0.50	CCW	SP	Skel	0.65"	-	c/w Blade & Bracket	3

## Singer

Part #	HP	Spd/RPM	Volts	Amps	Rot	Type	Dia	Body	Shaft	Comment	Fig
<b>R2675</b>	<b>1/30</b>	4/1075	208/230	0.40	CCW	2/370	5.0"	3.80"	7.7"x1/2"x7.7"	02024224	5
<b>R52150</b>	<b>1/4</b>	3/1025	208/230	2.00	CW	7.5/370	5.5"	4.30"	4.5"x1/2"x4.2"	02024246	6

## Snyder General

Part #	HP	Spd/RPM	Volts	Amps	Rot	Type	Dia	Body	Shaft	Comment	Fig
<b>R2198</b>	<b>1/14</b>	3/820	115	1.30	CCW	7.5/370	5.0"	4.50"	3.4"x1/2"	c/w Plug	7
<b>R2197</b>	<b>1/14</b>	3/820	115	1.30	CCW	7.5/370	5.0"	4.50"	3.4"x1/2"	Plug & 8.37" Bolt Circle	8
<b>R2299</b>	<b>1/8</b>	5/1000	115	2.00	CCW	PSC/INC	5.0"	3.30"	4.3"x1/2"	9"&10" Bolt Circle	9

Rotation determined opposite shaft end  
Double shaft determined at lead end

Shaft length measured from  
hub face to shaft end

Fig.1

Fig.2

Fig.3

Fig.4

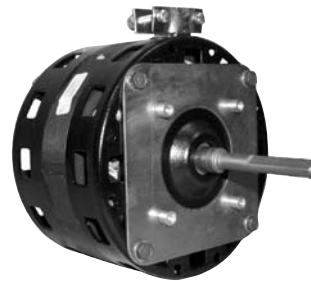


Fig.5

Fig.6

Fig.7

Fig.8



## Tecumseh

Part #	HP/ Watts	Spd/RPM	Volts	Amps	Rot	Type	Dia	Body	Shaft	Comment	Fig
<b>R5211</b>	<b>4</b>	1/1550	115	0.29	CW	SP	3.8"	4.50"	Hubless	TFM41	4
<b>R5311</b>	<b>6</b>	1/1550	115	0.36	CW	SP	3.5"	2.80"	Hubless	TFM61	4
<b>R5421</b>	<b>9</b>	1/1550	208/230	0.29	CW	SP	3.5"	2.80"	Hubless	TFM91	4
<b>R5411</b>	<b>9</b>	1/1550	115	0.58	CW	SP	3.5"	2.80"	Hubless	TFM62, 92	4
<b>R3512</b>	<b>35</b>	1/1550	208/230	0.70	CW	SP	3.8"	3.50"	Hubless	TFM352	5
<b>R3511</b>	<b>35</b>	1/1550	115	1.40	CW	SP	3.8"	3.50"	Hubless	TFM351	5
<b>R5122</b>	<b>50</b>	1/1550	208/230	0.85	CW	SP	3.8"	4.00"	2.0"×5/16"	TFM502	6
<b>R2372</b>	<b>1/20</b>	1/1550	230	1.10	CW	SP	5.0"	3.00"	2.8"× 3/8"	TFM372	7
<b>UE-9488</b>	<b>1/20</b>	1/1500	115	1.7	CW	SP	5.0"	4.87"	2 1/8"× 5/16"	TMF191, TFM265, 810E019A080, EM F33HXGFG-2876	8
<b>UE-9487</b>	<b>1/12</b>	1/1500	230	1.3	CW	SP	5.0"	4.87"	2 1/8" × 5/16"	TFM262, 810E026A81, EM F33HXDJ-3668	8

## Temspec

Part #	HP	Spd/RPM	Volts	Amps	Rot	Type	Dia	Body	Shaft	Comment	Fig
<b>R2198</b>	<b>1/14</b>	3/820	115	1.30	CCW	7.5/370	5.0"	4.50"	3.4"×1/2"	c/w Plug	1
<b>R2194</b>	<b>1/14</b>	3/820	115	1.25	CCW	7.5/370	5.0"	4.00"	3.4"×1/2"	DE3E141N	3
<b>R2195</b>	<b>1/14</b>	3/740	115	2.10	CCW	7.5/370	5.0"	4.60"	3.4"×1/2"	DE3F056N	3
<b>R2197</b>	<b>1/14</b>	3/820	115	1.30	CCW	7.5/370	5.0"	4.50"	3.4"×1/2"	Plug & 8.37" Bolt Circle	2
<b>R2196</b>	<b>1/8</b>	3/850	115	2.50	CCW	7.5/370	5.0"	4.50"	3.9"×1/2"	DE3G110N	3
<b>DD-029</b>	<b>1/8</b>	5/1000	115	2.10	CCW	PSC/INC	5.0"	3.57"	5.0"×1/2"	L350, L450, L600, DA3E200, DA3F100, DA3G142, R2299	3



Fig.1



Fig.2



Fig.3



Fig.4



Fig.5

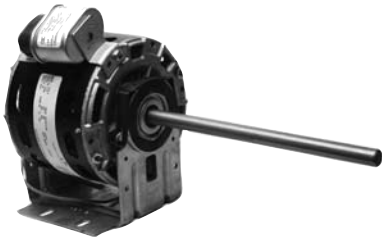


Fig.5



Fig.6

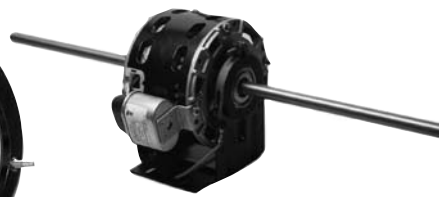


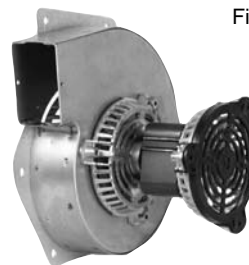
Fig.7



Fig.8



Fig.9



## Torin

Part #	HP	Spd/RPM	Volts	Amps	Rot	Type	Dia	Body	Shaft	Comment	Fig
<b>R610</b>	<b>1/50</b>	2/3000	115	0.91	CW	SP	Skel	0.87"	1.2"x7/32"	7627171	1
<b>R334</b>	<b>1/15</b>	1/3000	115	2.30	CCW	SP	3.3"	4.25"	1.5"x1/4"	7627181,221, 271, 291	2

## Trane

Part #	HP	Spd/RPM	Volts	Amps	Rot	Type	Dia	Body	Shaft	Comment	Fig
<b>RFB143</b>	<b>1/45</b>	1/3000	115	0.95	CCW	S.P.	3.3"	-	--	MID EFF. FURNACE	3
<b>RFB380</b>	<b>1/40</b>	1/2800	208/230	0.25	CCW	PSC/ 2/370	3.3"	8.10"	-	X38040036037	4
<b>UE-954</b>	<b>1/30</b>	3/1100	115	0.60	CW	PSC/Inc	5.0"	4.00"	8.5"x1/2"	MOT1878,1875	5
<b>UE-641</b>	<b>1/30</b>	3/1075	115	0.50	CW	PSC/Inc	5.0"	3.50"	8"x1/2"x9"	MOT1876	7
<b>RFB73</b>	<b>1/30</b>	1/3000	115/230	0.82	CW	SP	3.3"	5.30"	-	38040252	6
<b>RFB787</b>	<b>1/30</b>	1/3000	115	1.20	CW	SP	Skel	6.00"	-	787P01	9
<b>R213</b>	<b>1/25</b>	1/1550	115	1.10	CCW	S.P.	3.3"	2.90"	1.8" x 5/16"	70200011	8
<b>R303</b>	<b>1/25</b>	1/1550	115	1.50	CCW	S.P.	3.3"	3.80"	3.3" x 5/16"	70270010	8
<b>UE-9608</b>	<b>1/20</b>	3/1100	115	0.60	Rev	PSC/Inc	5.0"	3.25"	9.5"x1/2"	MOT1875	5
<b>RFB130</b>	<b>1/18</b>	1/3000	115	0.70	CCW	S.P.	3.3"	--	--	HIGH EFF. FURNACE	9
<b>UE-953</b>	<b>1/15</b>	3/1100	115	0.80	CW	PSC/Inc	5.0"	3.25"	10.5"x1/2" x10.5"	MOT1877	7
<b>UE-945</b>	<b>1/8</b>	3/1500	115	1.20	CE	PSC/Inc	5.0"	4.00"	9"x1/2" x7.5"	MOT1978, 481	7

Rotation determined opposite shaft end  
Double shaft determined at lead end

Shaft length measured from  
hub face to shaft end



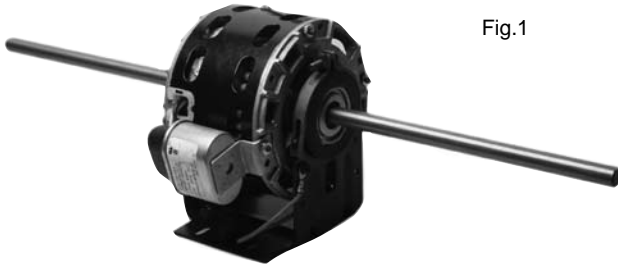


Fig.1

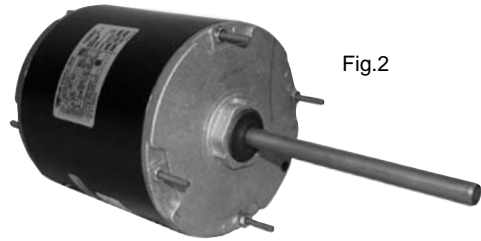


Fig.2

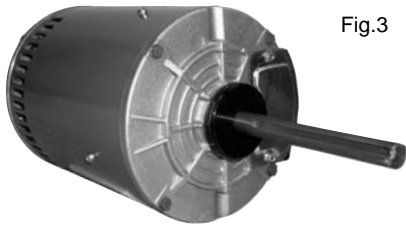


Fig.3

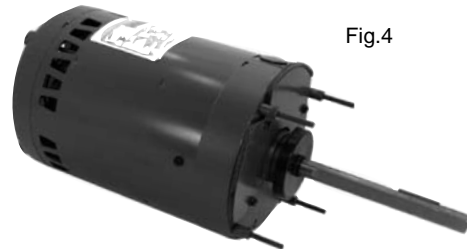


Fig.4

## Trane

Part #	HP	Spd/RPM	Volts	Amps	Rot	Type	Dia	Body	Shaft	Comment	Fig
<b>UE-955</b>	<b>1/6</b>	3/1500	115	2.00	CW	PSC/Inc	5.0"	4.00"	10.5"x1/2" x10.5"	MOT1979, 482	1
<b>R42604</b>	<b>1/3</b>	1/1100	575	0.80	R.P.	P.S.C. /7.5/370	5.5"	5.80"	6.0" x 1/2"	MOT2604	2
<b>R42606</b>	<b>1/2</b>	1/1125	575	1.3	REV	P.S.C. /7.5/370	5.5"	5.50"	6.0" x 1/2"	MOT2606	2
<b>R42605</b>	<b>1/2</b>	1/1625	575	0.90	CW	P.S.C. /15/370	5.5"	7.30"	6.0" x 1/2"	MOT2605	2
<b>R42607</b>	<b>3/4</b>	1/1075	575	1.60	REV	P.S.C. /15/370	5.5"	5.50"	6.0" x 1/2"	MOT2607	2
<b>S1454</b>	<b>1</b>	1/1075	208/230 /460	5.20	REV	P.S.C. /12.5/370	6.5"	8.70"	6.0" x 5/8"	MOT2461	3
<b>T2538</b>	<b>1</b>	1/1140	208/230 /460	4.10	REV	3PH	6.5"	9.10"	5.0" x 5/8"	MOT2463	3
<b>T2540</b>	<b>1</b>	1/1140	575	1.70	REV	3PH	6.5"	9.10"	5.0" x 5/8"	MOT2914	3
<b>C770</b>	<b>1</b>	1/1075	208/230 460	4.80	REV	PSC/ 25/370	6.5"	10.75"	6.0"x5/8"	MOT2461	4
<b>S1456</b>	<b>1 1/2</b>	1/1075	208/230 /460	6.80	REV	P.S.C. /25/370	6.5"	10.50"	6.0" x 5/8"	MOT2462	3
<b>T2542</b>	<b>1 1/2</b>	1/1140	208/230 /460	5.40	REV	3PH	6.5"	10.10"	5.0" x 5/8"	MOT2464	3
<b>T2543</b>	<b>1 1/2</b>	1/1140	575	2.30	REV	3PH	6.5"	10.10"	5.0" x 5/8"	MOT1590	3
<b>C771</b>	<b>1 1/2</b>	1/1075	208/230 460	6.60	REV	PSC 25/370	6.5"	12.00"	6.0"x5/8"	MOT2462	4

OEM

Fig.1



Fig.2



Fig.3



Fig.4

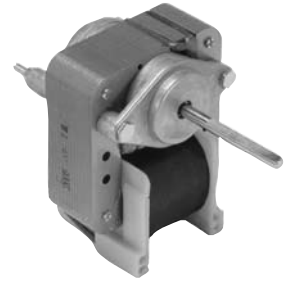


Fig.5

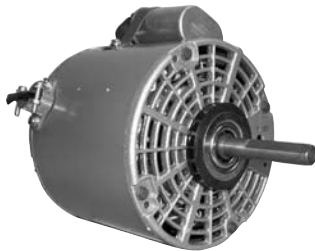


Fig.6



Fig.7



## Tweed Steel

Part #	HP	Spd/RPM	Volts	Amps	Rot	Type	Dia	Body	Shaft	Comment	Fig
<b>R500</b>	<b>1/70</b>	1/1550	115	0.66	CCW	SP	3.3"	2.35"	1.6"x5/16"	23197211	1

## Tyler

Part #	HP	Spd/RPM	Volts	Amps	Rot	Type	Dia	Body	Shaft	Comment	Fig
<b>R5715</b>	<b>15W</b>	1/1550	115	0.37	CW	SP	3.5"	3.50"	-	5215879	2
<b>R5720</b>	<b>15W</b>	1/1550	115	0.38	Rev	SP	3.5"	3.50"	-	5212930	3
<b>R109</b>	<b>1/135</b>	1/1550	115	0.55	CW	SP	3.3"	1.72"	0.8 Hubless	Evaporator Fan	3
<b>R605</b>	<b>1/65</b>	1/2800	115	0.84	CW	SP	Skel	0.88"	1.7"x0.1811	Evaporator Fan	4
<b>R3042</b>	<b>1/4</b>	1/1625	230	1.90	CCW	PSC/Inc	5.5"	4.80"	2.5"x1/2"	Ball Bearing	5

## Unilux

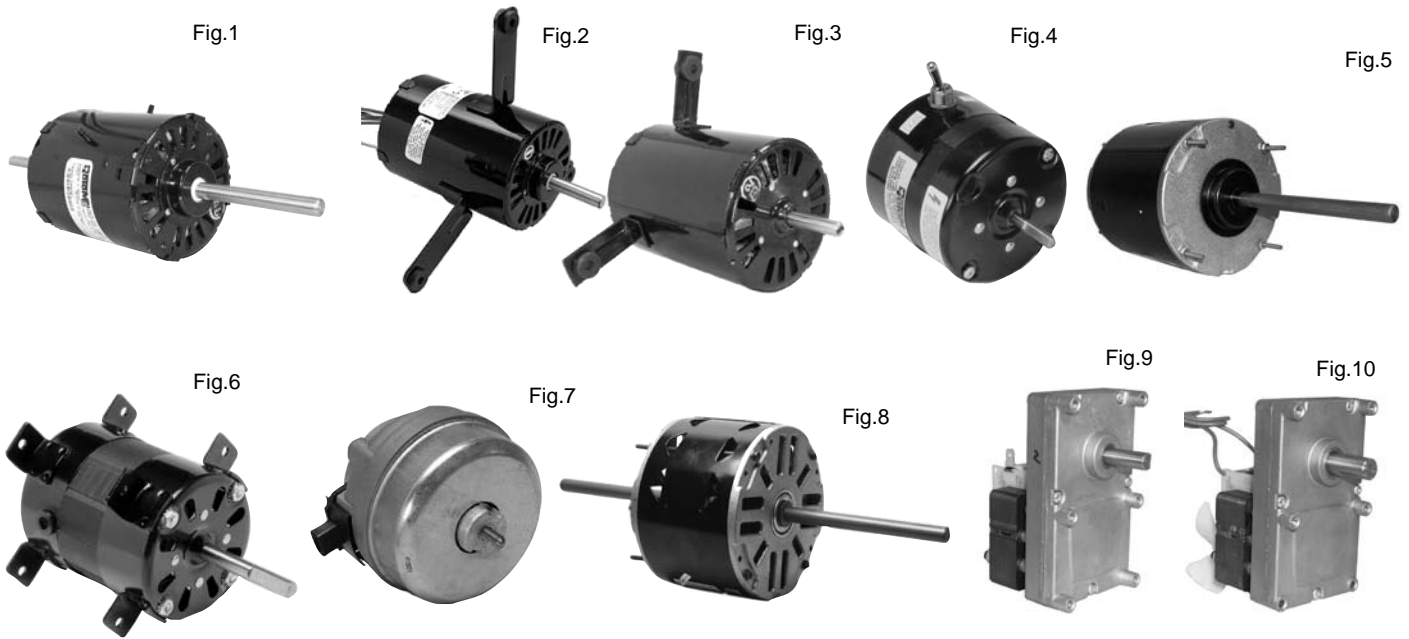
Part #	HP	Spd/RPM	Volts	Amps	Rot	Type	Dia	Body	Shaft	Comment	Fig
<b>DD-029</b>	<b>1/8</b>	5/1000	115	2.60	CCW	PSC/INC	5.0"	3.75"	5.0"x1/2"	L350, L450, L600, DA3E200, DA3F100, DA3G142, R2299	6
<b>DD-030</b>	<b>1/6</b>	5/950	115	2.60	CCW	PSC/INC	5.5"	3.98"	4.4"x1/2"	5KCP39DEV2795	6

## Vanee Heat Recovery Motor

Part #	Watts	Spd/RPM	Volts	Amps	Rot	Type	Dia	Body	Shaft	Comment	Fig
<b>R348</b>	<b>1/15</b>	1/1550	115	1.12	CW	PSC	3.3"	4.0"	3.2"x5/16	M1703	7

Rotation determined opposite shaft end  
Double shaft determined at lead end

Shaft length measured from  
hub face to shaft end



## Venmar Make Up Air Unit 3.3" Motor

Part #	HP	Spd/RPM	Volts	Amps	Rot	Type	Dia	Body	Shaft	Comment	Fig
<b>R462</b>	<b>1/8</b>	3/1600	115	0.90	CW	7.5/370	3.3"	4.13"	3.5"x5/16"x3.5	02101	1
<b>R438</b>	<b>1/7</b>	2/1600	115	1.03	CW	4/370	3.3"	4.31"	1.55"x5/16"	01038	2
<b>R366</b>	<b>1/4</b>	3/1630	115	1.68	CW	7.5/370	3.3"	4.78"	2.97"x3/8"x3.0"	02100	1
<b>R422</b>	<b>1/3</b>	3/1690	115	2.89	CW	7.5/370	3.3"	4.93"	2.06"x3/8"	02209	3

## B.D. Waite

Part #	HP	Spd/RPM	Volts	Amps	Rot	Type	Dia	Body	Shaft	Comment	Fig
<b>R206</b>	<b>1/80</b>	2/1550	115	0.56	CW	SP	3.3"	2.09"	1.4"x1/4"	Humidifiers	4

## Weather King

Part #	HP	Spd/RPM	Volts	Amps	Rot	Type	Dia	Body	Shaft	Comment	Fig
<b>R22645</b>	<b>1/8</b>	1/825	208/230	0.90	Rev	PSC 5/370	5.5"	4.30"	4.8"x1/2"	D832, 21276-01	5
<b>R22170</b>	<b>1/5</b>	1/1075	208/230	1.60	Rev	PSC 5/370	5.5"	3.80"	6.0"x1/2"	K136, D746, 442	5

## Westcan

Part #	HP	Spd/RPM	Volts	Amps	Rot	Type	Dia	Body	Shaft	Comment	Fig
<b>R480</b>	<b>1/30</b>	1/1550	208/230	0.80	CCW	SP	3.3"	4.00"	2.5"x3/8"	A2001B	6

## Whirpool - Inglis

Part #	HP	Spd/RPM	Volts	Amps	Rot	Type	Dia	Body	Shaft	Comment	Fig
<b>R5109</b>	<b>2W</b>	1/1550	115	0.25	CW	SP	3.5"	2.50"	-	Condenser Fan	7
<b>R859</b>	<b>1/3</b>	3/1100	208/230	1.50	CCW	PSC 5/370	5.5"	3.90"	5.5"x1/2"x5.3"	R.A.C Delco Motors	8

## Whitefield Auger Motors

Part #	HP	Spd/RPM	Volts	Amps	Rot	Type	Dia	Body	Shaft	Comment	Fig
<b>RGM451</b>	-	1/1.0	115	0.51	CCW	SP	-	3.00"	1.1"x3/8"	4514U1-063	9
<b>RGM452</b>	-	1/2.0	115	1.26	CCW	SP	-	3.10"	1.1"x3/8"	CDN.COMFORT IND. V07926AAD9, V002	9
<b>RGM651</b>	-	1/5.5	115	1.00	CCW	SP	-	3.25"	1.1"x1/2"	ECM2616	10

Fig.1



Fig.2



Fig.3

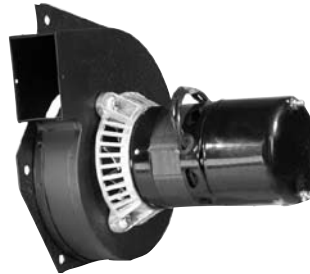


Fig.4



Fig.5



Fig.6



Fig.7



Fig.8

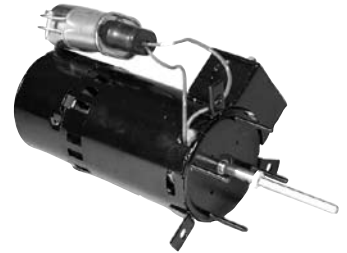


Fig.9

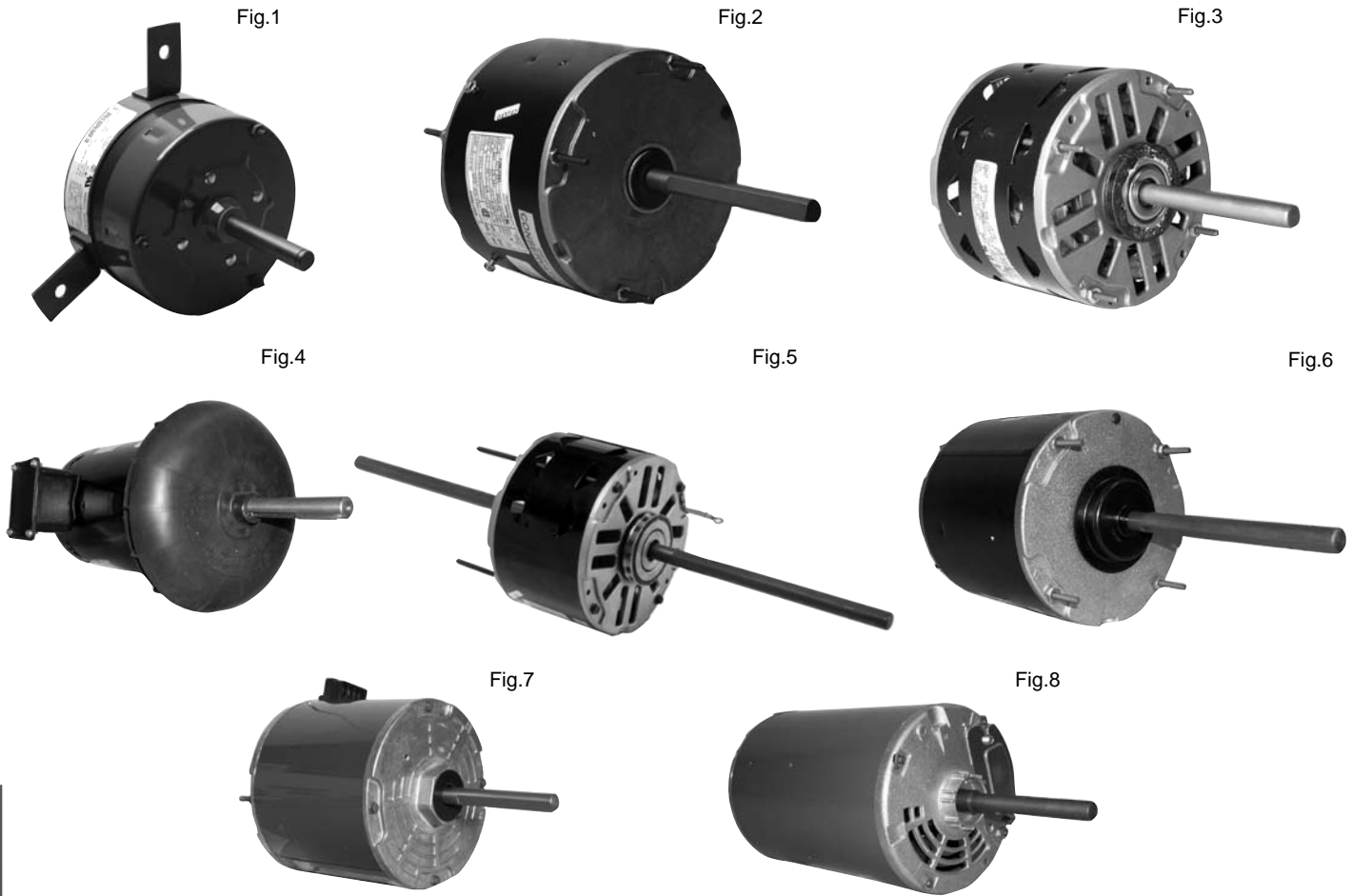


Fig.10



## York

Part #	HP	Spd/RPM	Volts	Amps	Rot	Type	Dia	Body	Shaft	Comment	Fig
<b>RFB63</b>	<b>1/60</b>	1/3000	230	0.50	CCW	S.P.	3.3"	—	—	York 26-22239	1
<b>RFB73</b>	<b>1/55</b>	1/3000	115/230	0.45	CW	S.P.	3.3"	—	—	24-25100	2
<b>RFB144</b>	<b>1/40</b>	1/3000	230	0.50	CCW	S.P.	3.3"	—	—	024-24115-701	3
<b>RFB296</b>	<b>1/40</b>	1/3000	460	0.30	CCW	S.P.	3.3"	—	—	26-29600	3
<b>RFB5</b>	<b>1/35</b>	1/3000	115/230	1.40	CCW	S.P.	3.3"	—	—	26-20224	2
<b>RFB137</b>	<b>1/25</b>	1/3000	115	0.70	CCW	4/370	3.3"	—	—	24-23230,26-29620	4
<b>RFM3</b>	<b>1/16</b>	1/3400	230/460	0.40	CCW	S.P.	3.3"	6.3"	2.3" x 1/4"	U660	5
<b>RFM653</b>	<b>1/16</b>	1/3430	230/460	0.40	CW	S.P.	3.3"	6.3"	2.3" x 1/4"	U653	5
<b>RFM680</b>	<b>1/16</b>	1/3450	115/230	1.90	REV	P.S.C/inc	3.3"	4.9"	2.5" x 1/4"	24-25115-001, 24-25115-201	6
<b>R2360</b>	<b>1/15</b>	1/1050	115	2.20	CCW	S.P.	5.0"	3.3"	2.8" x 1/2"	Heating	7
<b>RFM460</b>	<b>1/12</b>	1/3200	460	0.30	REV	P.S.C/inc	3.3"	7.0"	2.5" x 1/4"	York	6
<b>RFM410</b>	<b>1/10</b>	1/3000	115/230	1.40	REV	P.S.C/inc	3.3"	7.1"	3.7" x 1/4"	D410, D412	8
<b>R2615</b>	<b>1/8</b>	1/1050	115	3.90	CCW	S.P.	5.0"	3.9"	2.7" x 1/2"	Heating	7
<b>R760</b>	<b>1/8</b>	3/1100	115	1.30	CW	12.5/370	5.5"	3.5"	2.0" x 1/2" x 2.8"	24-14098-000	9
<b>R741</b>	<b>1/5</b>	1/1075	208/230	1.40	CW	5/370	5.0"	3.9"	6.0" x 1/2" x 6.0"	24-17774-000	10



## York

Part #	HP	Spd/RPM	Volts	Amps	Rot	Type	Dia	Body	Shaft	Comment	Fig
<b>R770</b>	<b>1/5</b>	3/1040	208/230	1.70	CW	3/370	5.5"	3.5"	2.0" x 1/2" x 6.2"	24-18431-000	1
<b>R22455</b>	<b>1/4</b>	1/1075	208/230	1.30	R.P.	5/370	5.5"	4.4"	6.0" x 1/2"	Heating	2
<b>R43583</b>	<b>1/4</b>	3/1075	115	4.80	REV	/5/370	5.5"	4.3"	6.0" x 1/2"	024-23206	3
<b>S1502</b>	<b>1/3</b>	1/1075	200/230 /460	2.80	REV	5/370	5.5"	7.3"	3.5" x 1/2"	24-18412-001, 002	4
<b>R32712</b>	<b>1/3</b>	2/1075	460	1.10	REV	5/370	5.5"	4.7"	6.4" x 1/2"	24-18412-003	2
<b>R43585</b>	<b>1/3</b>	3/1075	115	7.80	REV	7.5/370	5.5"	4.8"	6.0" x 1/2"	024-23210	3
<b>R52775</b>	<b>1/2</b>	1/1050	208/230	4.30	CW	5/370	5.5"	5.1"	9.0" x 1/2" x 9.9"	24-17775-000	5
<b>R22187</b>	<b>1/2</b>	1/1075	208/230	3.90	REV	10/370	5.5"	5.3"	6.0" x 1/2"	024-24110	6
<b>R32400</b>	<b>1/2</b>	1/1075	460	1.80	REV	10/370	5.5"	5.0"	6.0" x 1/2"	024-19691, 18395, 17994	6
<b>S1504</b>	<b>1/2</b>	1/1075	200/230 /460	3.20	REV	7.5/370	5.5"	9.2"	3.5" x 1/2"	24-17994-001, 18412-004	4
<b>R22139</b>	<b>1/2</b>	1/1090	460	1.40	REV	7.5/370	5.5"	4.8"	4.0" x 1/2"	02424110702	7
<b>R22140</b>	<b>1/2</b>	1/1090	230	2.70	REV	7.5/370	5.5"	4.8"	4.0" x 1/2"	02424110701	7
<b>R32512</b>	<b>1/2</b>	1/1100	460	1.50	CCW	5/370	5.5"	8.3"	4.8" x 1/2"	02419512700	8
<b>R32511</b>	<b>1/2</b>	1/1100	208/230	3.50	CW	3/370	5.5"	8.1"	3.7" x 1/2"	02419511700	8



Fig.1



Fig.2



Fig.3

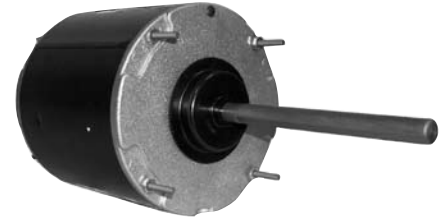


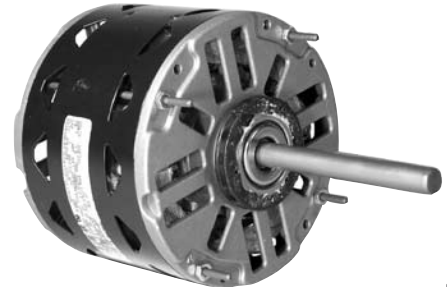
Fig.4



Fig.5



Fig.6



## York

Part #	HP	Spd/RPM	Volts	Amps	Rot	Type	Dia	Body	Shaft	Comment	Fig
<b>T2111</b>	<b>1/2</b>	1/3450	575	0.70	REV	3 PH	5.5"	9.0"	2.0"x 5/8" K	24-13776-006, 15447-005	1
<b>R52231</b>	<b>1/2</b>	2/1075	208/230	4.00	REV	P.S.C. 7.5/370	5.5"	7.0"	6.5" x 1/2" x 6.5"	Leece Neville RE128	2
<b>R32716</b>	<b>1/2</b>	2/1075	460	2.00	REV	P.S.C. 10/370	5.5"	5.5"	6.4" x 1/2"	24-18412-006, 19512-000	3
<b>R42404</b>	<b>3/4</b>	1/1075	208/230	5.20	CCW	S.P.	5.5"	6.5"	3.0" x 1/2"	02418404	4
<b>S1510</b>	<b>3/4</b>	1/1075	200/230 /460	4.60	REV	P.S.C. 20/370	5.5"	10.8"	3.5" x 1/2"	Cond. Fan, 1 Phase	5
<b>T2123</b>	<b>3/4</b>	1/3450	575	1.10	REV	3 PH	5.5"	9.5"	2.0"x5/8" K	24-15447-002, 006	1
<b>R43590</b>	<b>3/4</b>	3/1075	208/230	6.30	CW	P.S.C. 10/370	5.5"	5.3"	6.0" x 1/2"	024-18404	6
<b>R42023</b>	<b>1</b>	3/1075	208/230	5.30	REV	P.S.C. 15/370	5.5"	7.3"	5.0" x 1/2"	024-21672C	6
<b>T2138</b>	<b>1 1/2</b>	1/1750	208/230/ 460	4.40	REV	3 PH	6.5"	12.3"	2.0"x5/8" K	24-17671-002, 006	1
<b>T2170</b>	<b>5</b>	1/3450	575	5.00	REV	3 PH	6.5"	12.6"	2.3"x7/8" K	Cond. Fan, 3 Phase	1