

Fig. 1
RFM504



Fig. 2
RFM461



Fig. 3
RFM2
RFM10



Fig. 4
RFM1198



Fig. 5
RFM890



Fig. 6
RFM3
RFM4
RFM5
RFM653



Fig. 7
RFM580



Fig. 8
RFM11



Fig. 9
RFM462



Fig. 10
RFM680



Fig. 11
RFM12

Part #	HP	Spd/RPM	Amps	Volts	Rot	Shaft	Body	Type	Mntg	Comment	Fig
RFM504	1/200	1/3000	0.25	208/230	C.C.W.	0.8"x1/4"	4.90	S.P.	4 LEG	KEEPRITE 504015K	1
RFM461	1/40	1/3200	0.37	460	C.C.W.	2.5"x1/4"	5.80	S.P.	4 STUD	YORK 024-24115-019B 56" LEADS	2
RFM2	1/35	1/3000	1.30	115/230	C.C.W.	3.9"x5/16"	4.90	S.P.	2 STUD	FRANKLIN 80137, FASCO D406, D408	3
RFM10	1/35	1/3000	1.30	115/230	C.W.	3.9"x5/16"	4.90	S.P.	2 STUD	E.J. WALSH 8211910172, FEDDERS,W/CENTRIFUGAL SWITCH	3
RFM1198	1/30	1/3200	1.50	115	C.W.	2.3"x5/16"	3.40	S.P.	LUGS	LENNOX 25J1201	4
RFM890	1/25	1/3200	0.70	208/230	CCW	2.3"x5/16"	3.29	S.P.	STUD	LENNOX 98G8901, 7121-7091	5
RFM5	1/20	1/3000	1.80	115/230	C.C.W.	2.3"x1/4"	5.30	S.P.	4 STUD	FEDDERS S1900047003, U.E. 570	6
RFM4	1/20	1/3000	1.80	115/230	C.W.	2.3"x1/4"	5.30	S.P.	4 STUD	CARRIER HC24AU700, U.E. 571	6
RFM580*	1/20	1/3300	1.90	115	C.C.W.	1.9"x5/16"	3.50	S.P.	LUGS	HC27VE120, UNIV. JA1P053N, BRYANT P251-2307, U.E. 580	7
RFM11*	1/20	1/3200	1.80	115	C.C.W.	1.5"x5/16"	3.60	S.P.	3 LUGS	CLARE BROS. M045	8
RFM653	1/20	1/3430	1.00	230/460	C.W.	2.1"x1/4"	5.90	S.P.	4 STUD	CARRIER, YORK, KEEPRITE U653 FASCO 7131-0506, 5/16 BUSHING	6
RFM462	1/16	1/3450	0.30	460	C.W.	3.3"x5/16"	4.80	P.S.C. /INC	4 STUD	ICP 1171347 CARRIER HC30GB460	9
RFM680	1/16	1/3450	1.00	115/208 /230	REV. PLUG	1.2"x1/4"	7.00	P.S.C. /INC	4 STUD	YORK 024-24115-001,701, CARRIER HC680001B, W/SWITCH	10
RFM3	1/16	1/3400	1.20	230/460	C.C.W.	2.3"x1/4"	6.20	S.P.	4 STUD	CARRIER, YORK, U660 W/CENT.SWITCH 5/16 BUSHING	6
RFM12*	1/15	1/3000	2.00	115	C.C.W.	1.3"x5/16"	4.40	S.P.	3 LUGS	M046 - CLARE HIGH EFFICIENCY	11

* Note: Without Centrifugal Switch



Fig. 1
RFM230



Fig. 2
RFM9



Fig. 3
RFM232

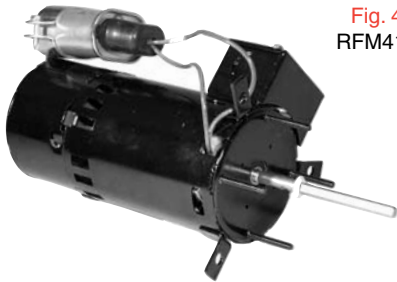


Fig. 4
RFM410

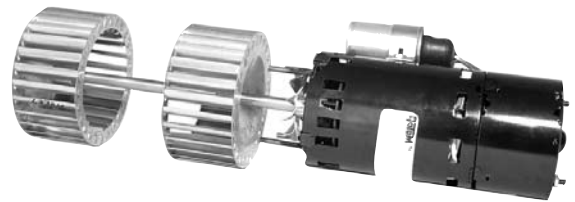


Fig. 5
RFM187



Fig. 6
RFM460

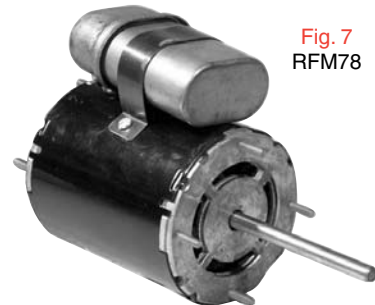


Fig. 7
RFM78

Part #	HP	Spd/RPM	Amps	Volts	Rot	Shaft	Body	Type	Mntg	Comment	Fig
RFM230	1/12	1/3200	0.60	230	REV. PLUG	2.5"x1/4"	7.00	P.S.C. /INC	STUD	024-24115-020, 714	1
RFM9	1/12	1/3000	1.10	208/230	C.C.W.	2.8"x5/16"	6.30	S.P.	STUD	KEEPRITE 501493,	2
RFM232	1/10	1/3450	0.55	208/230	C.W.	2.9"x5/16"	5.00	P.S.C. /INC	STUD	ICP 1171348, JF1H092N CARRIER HC30GB232	3
RFM410	1/10	1/3000	1.50	115/230	REV.	3.7"x1/4"	7.10	P.S.C. /INC	LUGS	FASCO D410, D412, REZNOR	4
RFM187	1/10	1/3400	0.30	460	C.W.	8.8"x3/8"	6.80	P.S.C. /INC	STUD	YORK 024-2500-5005, 024-2500-5702, D1187	5
RFM460	1/10	1/3200	0.30	460	REV.	2.5"x1/4"	7.00	P.S.C. /INC	STUD	YVFM450, FASCO D1171 YORK 024-24115-700	6
RFM78	1/9	1/3200	1.30	115/230	REV.	3.3"x5/16"	4.10	P.S.C. /INC	STUD	RFM7&8, REZNOR 43846-115V, 43424-208/230V	7

* Note: Without Centrifugal Switch