

Single Shaft-115 Volts - Open & Totally Enclosed

Sleeve Bearing - Shaded Pole & P.S.C.



Fig.1
R2197

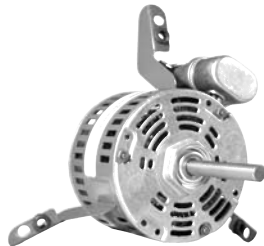


Fig.2
R2195
R2194



Fig.3
R2198
R2654

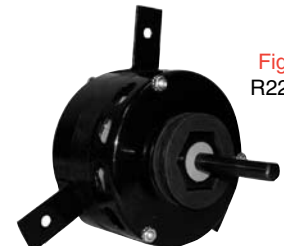


Fig.4
R2269



Fig.5
R6920

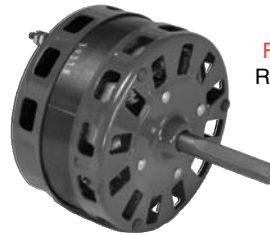


Fig.6
R2343



Fig.7
R2653



Fig.8
R2698



Fig.9
R2930
R2932
R2940
R2942
R2360



Fig.10
R2980

Part #	HP	Amps	Spd/RPM	Rot.	Shaft	Body	Encl.	Type	Comment	Fig.
R2360	1/15	1.70	1/1050	C.C.W.	2.8"×1/2"	3.59	T.E	S.P.	REZNOR 45330, 45331, 54332, FASCO D143, U.E. 360	9
R2269	1/15	2.40	1/1050	C.C.W.	3.0"×1/2"	3.00	OPEN	S.P.	KEEPRITE 160269, FASCO 7151-2850, 7151-3862	4
R6920	1/15	2.40	1/1050	C.C.W.	3.0"×3/8"	3.80	T.E.	S.P.	KEEPRITE, INTERCITY, LENNO× P8-6920	5
R2197	1/14	1.20	3/820	C.C.W.	3.4"×1/2"	3.80	OPEN	7.5/370	TEMSPEC DE3E142N	1
R2194	1/14	1.25	3/820	C.C.W.	3.4"×1/2"	3.22	OPEN	7.5/370 INC.	TEMSPEC DE3E141N	2
R2198	1/14	1.25	3/820	C.C.W.	4.1"×1/2"	3.22	OPEN	7.5/370	TEMSPEC DE3E142N	3
R2195	1/12	2.10	3/740	C.C.W.	4.0"×1/2"	3.60	OPEN	7.5/370 INC.	TEMSPEC DE3F056N	2
R2653	1/12	2.90	3/1050	C.W.	1.6"×1/2"	3.40	OPEN	S.P.	GENERAL REPLACEMENT	7
R2654	1/12	3.10	3/1050	C.C.W.	2.5"×1/2"	2.65	OPEN	S.P.	G.E. 5KSP29D×1906, FASCO D1054	4
R2930	1/10	4.00	1/1050	C.W	2.3"×3/8"	4.80	OPEN	S.P.	G.E. 2121, 2122, 2223, 2321,,2322 Dual Voltage	9
R2932	1/10	4.00	1/1550	C.C.W	2.3"×3/8"	4.80	OPEN	S.P.	G.E. 2131, 2132, 2231,2232, 2331, 2332, Dual Voltage	9
R2940	1/10	4.00	1/1050	C.W.	2.3"×3/8"	4.80	OPEN	S.P.	G.E. 2113, 2213, 2311,,2312, Dual Voltage	9
R2942	1/10	4.00	1/1550	C.W.	2.8"×3/8"	4.56	OPEN	S.P.	G.E. 2141, 2142, 2241,2242, 2341, 2342, Dual Voltage	9
R2980	1/10	3.20	3/1050	C.C.W.	3.3"×3/8"	3.80	S.E.	S.P.	GENERAL REPLACEMENT	10
R2698	1/10	3.50	1/1050	C.C.W.	2.1"×1/2"	3.00	OPEN	S.P.	BROAN A0520B2298, 30080126, 30080135	8

Motors continued next page

Rotation determined opposite shaft end
Double shaft determined at lead end

Shaft length measured from hub
face to shaft end

5.0" Motors



Single Shaft-115 Volts - Open & Totally Enclosed

Sleeve Bearing - Shaded Pole & P.S.C.



Fig.1
R2393
DD-029
R2196



Fig.2
R2398
R2387
R2617
R2395



Fig.3
R2368



Fig.4
R2379
R2386
R2343

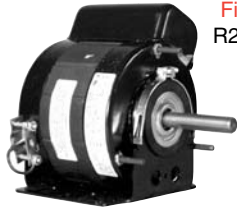


Fig.5
R2380



Fig.6
R2679
R2348
R2385
R2626



Fig.7
R2326
R2627
R2390



Fig.8
R2615



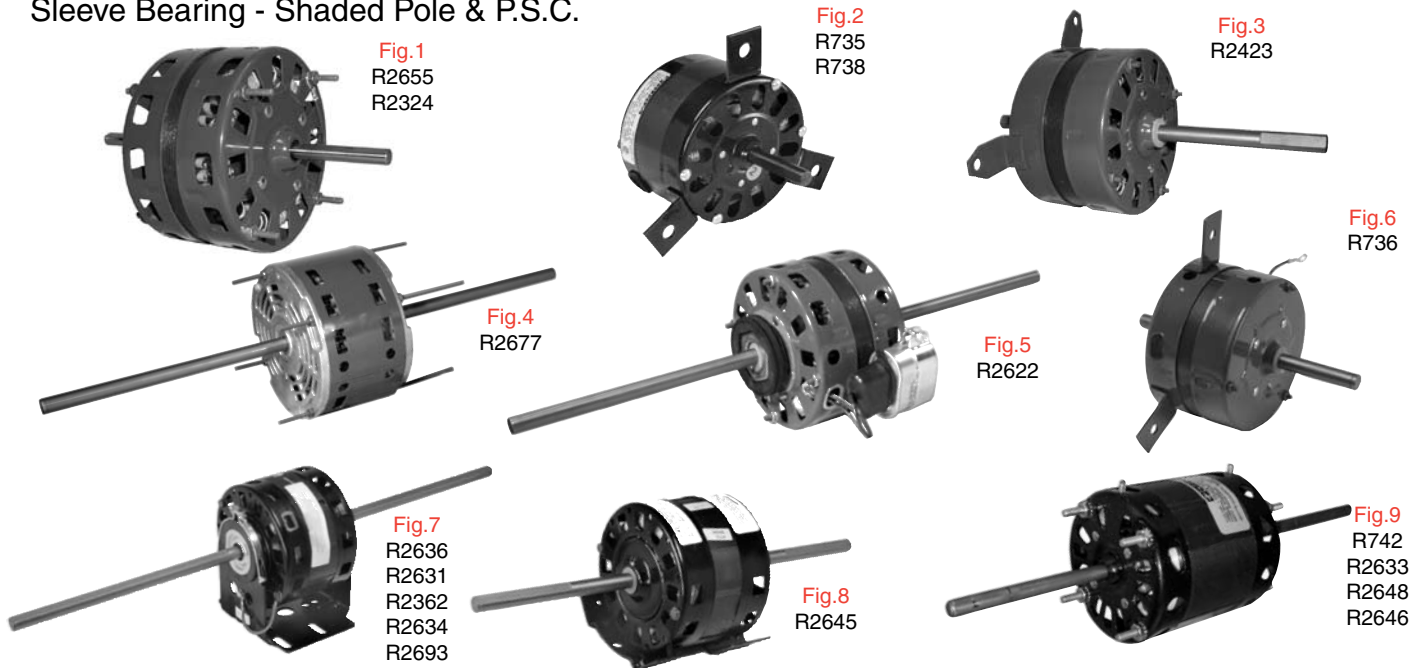
Fig.9
R2680

Motors continued from previous

Part #	HP	Amps	Spd/RPM	Rot.	Shaft	Body	Encl.	Type	Comment	Fig.
R2343	1/9	3.80	1/1050	C.C.W.	3.0"×1/2"	2.90	OPEN	S.P.	BROAN 1094343	4
DD-029	1/8	2.10	5/1000	REV.	5.0"×1/2"	3.61	OPEN	INC	UE-799, L350, L450, L600, DA3E200, DA3G142, R2299 INTERCITY UFE90,	1
R2615	1/8	2.60	1/1050	C.C.W.	3.1"×1/2"	4.10	T.E.	S.P.	UFG110,130,UFG150,300, REZNOR 45882,8	8
R2380	1/8	2.60	1/1075	C.C.W.	2.2"×1/2"	3.90	T.E.	INC.	REZNOR 170-45888,55681,9775,U.E. 380, FASCO D260	5
R2196	1/8	2.50	3/850	C.C.W.	3.9"×1/2"	4.00	OPEN	7.5/370 INC.	DE3G110N	2
R2386	1/8	5.00	2/1050	C.C.W.	3.8"×1/2"	3.90	OPEN	S.P.	U.E. 346, FASCO D180,COLEMAN	4
R2398	1/8	5.00	3/1050	C.C.W.	3.8"×1/2"	3.90	OPEN	S.P.	FASCO D178, D356,U.E. 98	2
R2617	1/8	5.20	1/1050	C.C.W.	5.5"×1/2"	3.30	OPEN	S.P.	U.E. 467, FASCO D1032,D247, D258	2
R2326	1/7	4.70	1/1050	C.C.W.	3.4"×1/2"	3.30	OPEN	S.P.	U.E. 326	7
R2348	1/6	5.50	4/1050	C.C.W.	4.5"×1/2"	3.80	OPEN	S.P.	FASCO D164	6
R2390	1/5	3.20	3/1075	REV.	5.5"×1/2"	3.90	OPEN	7.5/370	U.E.390, YORK 24-22489-000,BOHN 5002L, 5003F	7
R2368	1/5	3.50	4/1030	C.C.W.	3.9"×1/2"	4.07	OPEN	4/370	1268,024-17903-703,HC37MA135,P8 -3789,90,3527,29,4662,9662	3
R2385	1/5	5.50	3/1050	C.C.W.	5.5"×1/2"	4.00	OPEN	S.P.	U.E. 385, 90, FASCO D158	6
R2393	1/5	6.00	1/1050	C.C.W.	5.8"×1/2"	3.80	OPEN	S.P.	MILLER FURNACE OML6433	1
R2627	1/5	6.00	1/1050	C.C.W.	5.5"×1/2"	3.30	OPEN	S.P.	FASCO D240,	7
R2626	1/5	7.10	4/1050	C.C.W.	2.6"×1/2"	3.90	OPEN	S.P.	319P327, 368, 375, 477, 478,319P705, 892, 322P083, 582	6
R2387	1/5	7.80	4/1050	C.C.W.	4.8"×1/2"	4.10	OPEN	S.P.	CARRIER HC37MA134,HC37MA138,05-1049, 05-1051, 05-1054	2
R2395	1/4	3.10	3/1075	REV.	3.1"×1/2"	4.10	OPEN	5/370	FASCO D150	2
R2680	1/4	3.50	3/1050	C.C.W.	2.8"×1/2"	3.69	OPEN	15/370	FASCO D289	9
R2379	1/4	6.10	3/1075	C.C.W.	2.5"×1/2"	4.10	OPEN	10/370	024-17903-005, KCP29KK451BT	4
R2679	1/4	10.00	3/1050	C.C.W.	2.2"×1/2"	4.00	OPEN	S.P.	LENNOX, YORK, CARRIER	6

Double Shaft - 115 Volts - Open & Totally Enclosed

Sleeve Bearing - Shaded Pole & P.S.C.



Part #	HP	Amps	Spd/RPM	Rot.	Shaft	Body	Encl.	Type	Cross Reference	Fig
R2655	1/12	1.10	1/1550	C.C.W.	2.9"x1/2"x2.8"	3.00	OPEN	5/370	NUTECH-LIFEBREATH,A0812B2355	1
R735	1/12	1.10	2/1165	C.W.	2.4"x1/2"x5.0"	3.60	OPEN	10/370	KEEPRITE 200063	2
R736	1/12	1.30	3/1080	C.C.W.	1.9"x1/2"x2.7"	3.50	T.E.	4/370	130184, SM701, SM715, SM706,SM716,SM721	6
R2324	1/12	1.40	1/1550	C.C.W.	2.9"x3/8"x2.6"	3.75	OPEN	INC	23-204, 5KCP298G8560BS, 7185-0242	3
R742	1/10	1.35	3/1080	C.C.W.	3.5"x1/2"x4.0"	3.30	OPEN	4/370	CAMCO WJ94X316	9
R2631	1/10	1.50	3/1625	C.C.W.	9.3"x1/2"x9.3"	3.50	OPEN	5/370	U.E.382, CAMCO WJ94X314,	7
R738	1/10	1.50	3/1330	C.W.	2.4"x1/2"x5.0"	3.50	OPEN	7.5/370	SM702, 707, 712, WJ94M124,71926, 89812, 98007, 98066	2
R2362	1/10	1.70	4/1075	C.C.W.	10.3"x1/2"x10.9"	3.30	OPEN	INC	U.E. 362, FASCO D253, D291	7
R2634	1/10	3.20	5/1050	C.C.W.	10.6"x1/2"x10.6"	3.50	OPEN	S.P.	U.E. 89, FASCO D256, D289,D1010, D1014	7
R2693	1/10	3.20	5/1050	C.C.W.	8.0"x3/8"x8.0"	4.50	OPEN	S.P.	U.E.93, 452, 293, FASCO D293, GE 2093	7
R2633	1/10	3.50	3/1550	C.C.W.	7.5"x1/2"x7.5"	3.30	OPEN	S.P.	U.E.420, FASCO D236,	9
R2636	1/10	3.50	3/1550	C.C.W.	9.3"x1/2"x9.3"	3.30	OPEN	S.P.	WJ94M120, 122, 123,WJ94M127, 129, 130	7
R2423	1/8	1.80	3/1330	C.W.	2.0"x1/2"x5.0"	3.40	OPEN	10/370	KEEPRITE, ELECTROHOME,200423	3
R2622	1/6	3.20	4/1550	REV. PLUG	8.2"x1/2"x8.1"	3.34	OPEN	5/370 INC.	AMERICAN AIR FILTER,HEAT PUMP 7184-0354	5
R2648	1/6	4.00	4/1550	C.C.W.	7.3"x1/2"x7.3"	3.80	OPEN	S.P.	U.E.407, FASCO D338	9
R2677	1/5	2.80	3/1625	C.C.W.	8.4"x1/2"x8.5"	3.50	OPEN	5/370	7124-0103	4
R2645	1/4	3.10	2/1625	C.W.	5.7"x1/2"x5.7"	3.60	S.E.	7.5/370	WESTINGHOUSE 322P708,COLEMAN	8
R2646	1/4	5.60	3/1050	C.C.W.	10.0"x1/2"x10.0"	4.00	OPEN	7.5/370	GENERAL REPLACEMENT	9

5.0" Motors



Single Shaft - 115/208/230, 208/230, 230 Volts

Sleeve Bearing - Shaded Pole-PSC



Fig.1
R2639
R2928
R2929



Fig.2
R1050
R2375

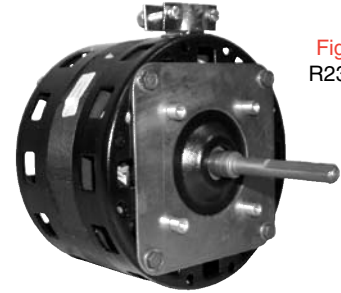


Fig.3
R2372



Fig.4
R2691
R2930
R2932
R2940
R2942
R2391
R2388
R2429

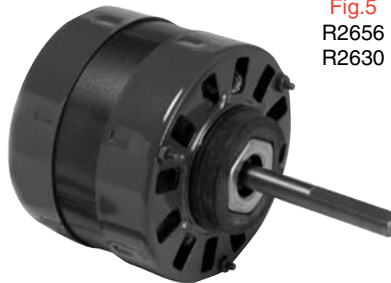


Fig.5
R2656
R2630

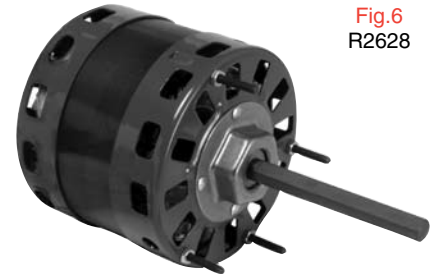


Fig.6
R2628

Part #	HP	Amps	Volts	Spd/RPM	Rot.	Shaft	Body	Encl.	Type	Cross Reference	Fig.
R2639	1/20	0.42	208/240	2/1075	C.W.	1.5"x1/2"	3.30	OPEN	3/370	CHROMALOX INCREMENTAL,01103-100, UE CE3E001N	1
R2375	1/20	1.00	230	1/1000	C.W.	2.5"x1/2"	3.00	OPEN	S.P.	AMERICAN AIR FILTER #141	2
R2372	1/20	1.10	230	1/1500	C.W.	2.8"x5/16"	3.10	OPEN	S.P.	TECUMSEH TFM372,8105037B01, 326P137	3
R2928	1/12	0.50	208/240	3/1000	C.C.W.	2.5"x1/2"	3.00	OPEN	3/370	CHROMALOX INCREMENTAL,01103-202, UE DE3D427N	1
R2930	1/10	4.00	115/208/230	1/1050	C.W.	2.3"x3/8"	4.80	OPEN	S.P.	G.E. 2121, 2122, 2223, 2321, 2322	4
R2932	1/10	4.00	115/208/230	1/1550	C.C.W.	2.3"x3/8"	4.80	OPEN	S.P.	G.E. 2131, 2132, 2231,2232, 2331, 2332	4
R2940	1/10	4.00	115/208/230	1/1050	C.W.	2.3"x3/8"	4.80	OPEN	S.P.	G.E. 2113, 2213, 2311, 2312	4
R2942	1/10	4.00	115/208/230	1/1550	C.W.	2.8"x3/8"	4.56	OPEN	S.P.	G.E. 2141, 2142, 2241,2242, 2341, 2342	4
R1050	1/8	0.90	208/240	1/1550	C.C.W.	3.0"x1/2"	3.30	T.E.	INC.	TRANE WW94X236, WW94X237,WW94X936,U.E.492, FASCO D1050	2
R2656	1/8	2.10	230	1/1050	C.C.W.	3.8"x1/2"	3.80	OPEN	S.P.	DA2F080 D316 D656 319P878,322P240 UE598	5
R2391	1/5	1.30	208/230	3/1075	REV	5.5"x1/2"	3.90	OPEN	7.5/370	FASCO D262, D1016,U.E. 391, 515	4
R2388	1/5	1.50	208/230	1/1075	REV	4.1"x1/2"	3.62	OPEN	5/370	WESTINGHOUSE 322P757	4
R2691	1/5	1.50	208/230	1/1075	C.W.	3.3"x1/2"	4.00	S.E.	5/370	MAGIC CHEF,CJK15,18,24,30,36, ARMSTRONG 35035B001, UE 691	4
R2429	1/5	3.10	208/230	3/1050	C.C.W.	5.5"x1/2"	3.90	OPEN	S.P.	U.E. 429, FASCO D318	4
R2628	1/4	1.40	208/230	3/1075	REV	4.5"x1/2"	4.10	OPEN	5/370	FASCO D151	6
R2929	1/4	1.30	208/240	1/1050	C.W.	2.0"x1/2"	3.30	OPEN	4/370	CHROMALOX INCREMENTAL,01103-201, UE DE3E102N	1
R2630	1/3	2.40	208/230	2/1400	C.W.	5.0"x1/2"	4.10	OPEN	6/370	WESTINGHOUSE 322P532,322P612, 322P798	5

Motors

Double Shaft - 208/230 Volts - Open & Totally Enclosed

Sleeve Bearing - Shaded Pole & P.S.C.

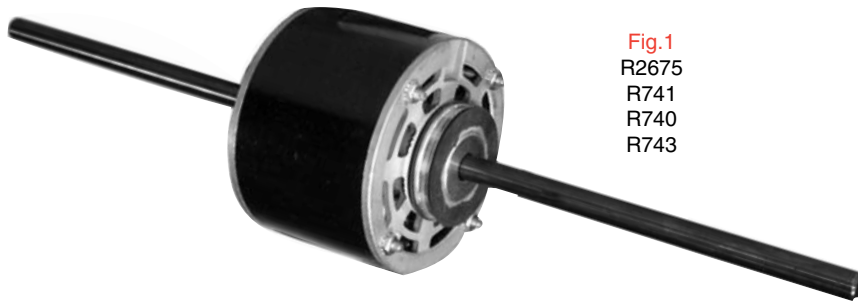


Fig.1
R2675
R741
R740
R743



Fig.2
R745

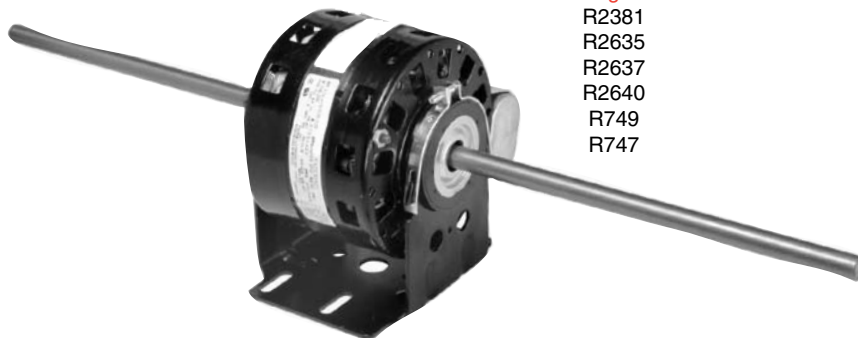


Fig.3
R2381
R2635
R2637
R2640
R749
R747

Part #	HP	Amps	Spd/ RPM	Rot.	Shaft	Body	Encl.	Type	Cross Reference	Fig.
R2675	1/30	0.30	4/1075	C.C.W.	8.5"x1/2"x8.5"	3.00	OPEN	2/370	AMERICAN AIR FILTER-SINGER, CLIMATE CONTROL 02024224	1
R2381	1/10	0.70	4/1075	C.C.W.	11"x1/2"x11"	3.38	OPEN	5/370	FASCO D1013, D292, D655, U.E. 381, FEDDERS D196186	3
R2635	1/10	1.60	4/1050	C.C.W.	9.3"x1/2"x9.3"	3.50	OPEN	S.P.	U.E. 320, FASCO D1015	3
R2637	1/10	1.80	3/1550	C.C.W.	10.4"x1/2"x10.4"	3.50	OPEN	S.P.	G.E. 5KSP29FK1543S, YORK 26-17384-000	3
R740	1/6	2.24	2/1050	C.C.W.	2.3"x1/2"x4.0"	3.12	OPEN	S.P.	S19600161003, S19600161016, U.E.523	1
R741	1/5	1.40	1/1075	C.W.	6.0"x1/2"x6.0"	3.90	OPEN	5/370	U.E.466, WESTINGHOUSE, 322P054,055,272,539,729	1
R2640	1/5	1.50	3/1500	C.C.W.	9.5"x1/2"x9.5"	3.30	OPEN	5/370	WESTINGHOUSE 322P533	3
R743	1/5	1.60	3/1400	C.C.W.	3.5"x1/2"x4.0"	3.90	OPEN		FASCO D1033	1
R745	1/4	1.90	2/1330	C.C.W.	1.8"x1/2"x2.8"	3.40	T.E.	5/370	CAMCO C275399, WJ94M116	2
R749	1/4	2.00	3/1075	C.C.W.	8.5"x1/2"x8.5"	4.81	OPEN	7.5/370	GEN. REPLACEMENT	3
R747	1/3	2.30	1/1625	C.C.W.	7.2"x1/2"x7.2"	4.00	OPEN	6/370	YORK 24-22492-000, WESTINGHOUSE 350A103H16	3