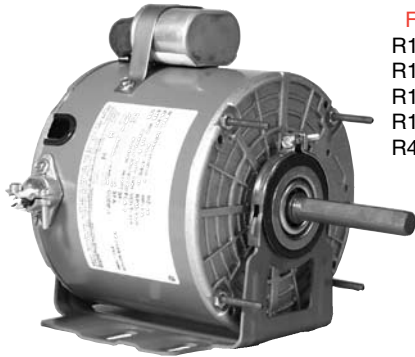


# 5.5" Motors

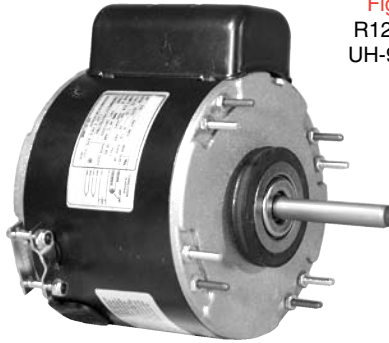


## Single Shaft-115 Volts

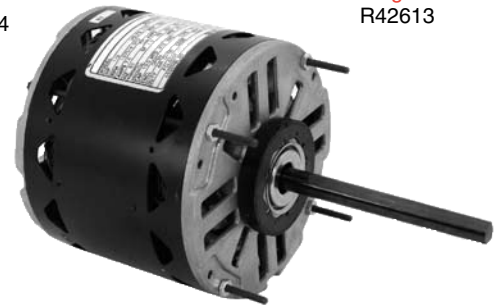
Sleeve & Ball Bearing - Shaded Pole - PSC - Open & Totally Enclosed



**Fig.1**  
R12835  
R12178  
R12834  
R12177  
R42819



**Fig.2**  
R12677  
UH-9034



**Fig.3**  
R42613



**Fig.4**  
R42813  
R42811



**Fig.5**  
DD-030

Motors continued from previous

Part #	HP	Amps	Spd/RPM	Rot.	Body	Shaft	Type	Encl.	Bearing	Comment	Fig.
<b>R42819</b>	<b>1/8</b>	2.20	1/700	C.W.	6.50	1.5"x1/2"	5/370	OPEN	SLEEVE	G.E.3134, 5KCP36KG246,5KCP38NG208, 5KCP39KGB909	1
<b>R42813</b>	<b>1/8</b>	2.40	3/1050	C.C.W.	4.00	4.8"x1/2"	INC.	OPEN	SLEEVE	CARRIER HC35ME104	4
<b>R42811</b>	<b>1/8</b>	2.50	1/1050	C.C.W.	4.00	4.8"x1/2"	INC.	OPEN	SLEEVE	DUNHAM BUSH E310025	4
<b>UH-9034</b>	<b>1/6</b>	2.40	1/1075	REV	4.55	3.4"x1/2"	INC	T.E.	BALL	UH1016, US1016, NB, 9034, D834, 3206, X032, X306, 177, 749	2
<b>DD-030</b>	<b>1/6</b>	2.60	5/950	C.C.W.	3.98	4.4"x1/2"	INC	OPEN	SLEEVE	UNILUX 5KCP39DEV2795	5
<b>R12835</b>	<b>1/6</b>	2.00	1/1625	REV.PLUG	4.75	2.8"x1/2"	INC.	T.E.	BALL	GEN. REPLACEMENT	1
<b>R12178</b>	<b>1/6</b>	2.00	1/1625	REV.PLUG	5.25	2.8"x1/2"	INC.	T.E.	SLEEVE	GEN. REPLACEMENT	1
<b>R12834</b>	<b>1/6</b>	2.20	1/1075	REV.PLUG	4.36	2.5"x1/2"	INC.	T.E.	BALL	MARATHON X306	1
<b>R12677</b>	<b>1/6</b>	2.80	1/1075	REV	4.36	2.5"x1/2"	5/370	T.E.	SLEEVE	UNIT HEATER	2
<b>R42613</b>	<b>1/6</b>	3.00	3/1050	REV.PLUG	3.60	5.2"x1/2"	7.5/370	OPEN	SLEEVE	FRANKLIN 73192, 80192,G.E. 3920, 3980	3
<b>R12177</b>	<b>1/6</b>	3.00	1/1075	REV.PLUG	4.80	2.8"x1/2"	INC.	T.E.	SLEEVE	FASCO D834,FRANKLIN 74002, MARATHON X302, U.E. 177	1

Continued Next Page

## Single Shaft - 115 Volts

Sleeve & Ball Bearing - PSC - Open & Totally Enclosed



Fig.1  
R42416



Fig.2  
R12486  
R12586



Fig.3  
DD-034  
R42034  
R42419

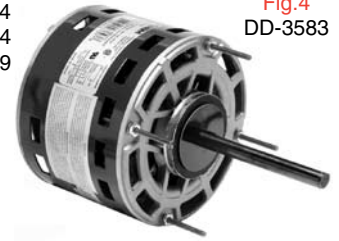


Fig.4  
DD-3583

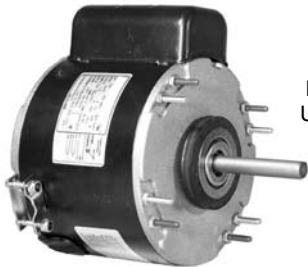


Fig.5  
R12686  
UH-9035

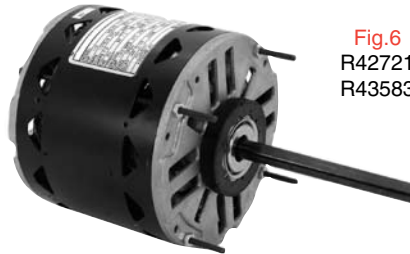


Fig.6  
R42721  
R43583



Fig.7  
R42411  
R42413

Motors continued from previous

Part #	HP	Amps	Spd/RPM	Rot.	Body	Shaft	Type	Encl.	Bearing	Comment	Fig.
DD-034	1/4	3.60	4/1075	REV.	3.40	6.0"x1/2"	5/370	OPEN	SLEEVE	FML1026, D1730, 3783, X034, 752, R42034, R42419	3
DD-3583	1/4	4.40	3/1075	REV.	4.04	4.5"x1/2"	5/370	OPEN	SLEEVE	DL1026, WG840583, 1863, D721, E201 3583 X000, 533, R43583	4
UH-9035	1/4	4.10	1/1075	REV.	4.52	3.4"x1/2"	INC	T.E.	BALL	UH1026, US1026, NB, 9035, D734, X303, X307. 566, 734, 750	5
R42034	1/4	3.30	4/1075	REV.PLUG	4.00	4.0"x1/2"	INC.	OPEN	SLEEVE	95H57,95H5701 ,67F14, 67F1401503667, 21742-C005, 23206-C001	3
R42413	1/4	3.60	3/1050	C.C.W.	4.30	4.8"x1/2"	INC.	OPEN	SLEEVE	FASCO D924, CARRIER P257-3983	7
R42419	1/4	3.60	3/1075	REV.PLUG	4.10	6.0"x1/2"	7.5/370	OPEN	SLEEVE	GE 3783, 3922, 5KCP39HGD444	3
R42721	1/4	4.10	3/1075	REV.PLUG	4.30	6.5"x1/2"	7.5/370	OPEN	SLEEVE	U.E. 139, 533,FASCO D721	6
R12486	1/4	4.10	1/1075	REV.PLUG	4.80	2.8"x1/2"	INC.	T.E.	SLEEVE	GE 3J344GX5, U.E. 486,566, 586, MARATHON X303	2
R42411	1/4	4.20	1/1050	C.C.W.	4.30	4.8"x1/2"	INC.	OPEN	SLEEVE	BLANCHARD 79001, ADDISON 8101-417	7
R43583	1/4	4.60	3/1075	REV.	4.06	4.5"x1/2"	5/370	OPEN	SLEEVE	GE 3583	6
R12686	1/4	4.90	1/1075	REV.	4.25	3.0"x1/2"	5/370	T.E.	SLEEVE	UNIT HEATER	5
R12586	1/4	4.90	1/1075	REV.PLUG	4.36	2.5"x1/2"	INC.	T.E.	BALL	MARATHON X307	2
R42416	1/4	5.00	3/1625	REV.PLUG	4.50	6.5"x1/2"	10/370	OPEN	SLEEVE	FASCO D782, G.E. 3471, 3992, 3996	1

Continued Next Page

# 5.5" Motors



## Single Shaft - 115 Volts

Motors continued from previous

Sleeve & Ball Bearing - PSC - Open & Totally Enclosed

Motors



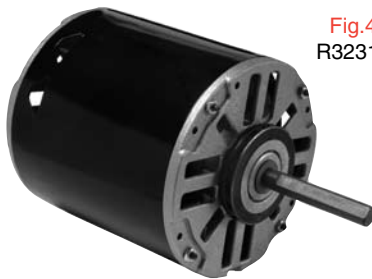
**Fig.1**  
R42310  
R42780



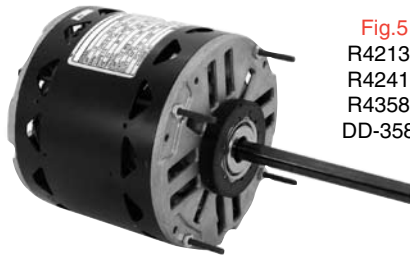
**Fig.2**  
R12682  
UH-9036



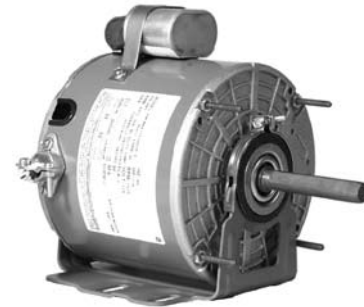
**Fig.3**  
R42035  
R42319  
DD-035



**Fig.4**  
R32317



**Fig.5**  
R42134  
R42415  
R43585  
DD-3585



**Fig.6**  
R183  
R182

Part #	HP	Amps	Spd/RPM	Rot.	Body	Shaft	Type	Encl.	Bearing	Comment	Fig.
<b>R42780</b>	<b>1/3</b>	4.10	3/1625	REV.PLUG	4.60	6.5"x1/2"	7.5/370	OPEN	SLEEVE	FASCO D780, G.E. 3481, 3994	1
<b>R12682</b>	<b>1/3</b>	4.30	2/1100	REV.PLUG	5.00	5.0"x1/2"	INC.	T.E.	SLEEVE	70202, 588-269	2
<b>R42035</b>	<b>1/3</b>	4.80	4/1075	REV.PLUG	4.30	4.0"x1/2"	10/370 INC.	OPEN	SLEEVE	45H31,79A52,79A5201,45H69, 45H6901,57C2501,86G45,503881	3
<b>R32317</b>	<b>1/3</b>	4.80	1/825	C.C.W.	5.60	2.5"x1/2"	5/370	OPEN	SLEEVE	ARKLA B14506393, B14506363	4
<b>R42310</b>	<b>1/3</b>	6.00	4/1075	C.C.W.	4.00	5.2"x1/2"	5/370	OPEN	SLEEVE	24-18238-000, 41A4201, P-8-7505, P-8-9450	1
<b>R42415</b>	<b>1/3</b>	6.00	4/1050	C.C.W.	4.40	4.6"x1/2"	INC.	OPEN	SLEEVE	WESTINGHOUSE 321P677, BDP, CARRIER, AO SMITH 321P591	5
<b>R42134</b>	<b>1/3</b>	6.00	3/1075	REV.PLUG	4.60	6.5"x1/2"	7.5/370	OPEN	SLEEVE	U.E. 134, 140, 148, 532, FASCO D727, D926	5
<b>R42319</b>	<b>1/3</b>	6.00	3/1075	REV.PLUG	4.60	6.0"x1/2"	10/370	OPEN	SLEEVE	FRANKLIN 80827, G.E. 3785	3
<b>R43585</b>	<b>1/3</b>	6.40	3/1075	REV.	4.31	4.5"x1/2"	7.5/370	OPEN	SLEEVE	GE 3585	5
<b>R183</b>	<b>1/3</b>	6.50	1/1075	REV.PLUG	6.00	2.8"x1/2"	INC.	T.E.	BALL	FRANKLIN 73183, U.E. 183 FASCO D732	6
<b>R182</b>	<b>1/3</b>	6.50	1/1075	REV.PLUG	6.00	2.8"x1/2"	INC.	T.E.	SLEEVE	MARATHON X304,	6
<b>DD-035</b>	<b>1/3</b>	4.80	4/1075	REV	4.30	6.0"x1/2"	10/370	OPEN	SLEEVE	FML1036, D1731, 3785, X035, 753, 947,R42035, R42319	3
<b>DD-3585</b>	<b>1/3</b>	6.00	3/1075	REV	4.28	4.5"x1/2"	5/370	OPEN	SLEEVE	DL1036, WG480585, 1864, D727, E203, 3585, X0023, 532, R43585	5
<b>UH-9036</b>	<b>1/3</b>	5.00	1/1075	REV	4.52	3.5"x1/2"	INC	T.E.	BALL	UH1036, US1036, NB, 9036, D732, 3212, X304, X308, 183, 751	2

Continued Next Page

## Single Shaft - 115 Volts

Sleeve & Ball Bearing - PSC - Open & Totally Enclosed



Fig.1  
R43600  
R43602

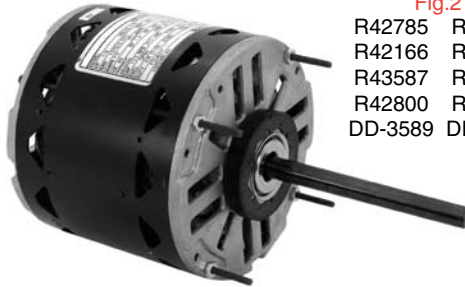


Fig.2  
R42785 R43589  
R42166 R42016  
R43587 R42728  
R42800 R42812  
DD-3589 DD-3587



Fig.3  
R42036  
R42219  
R42013  
DD-036

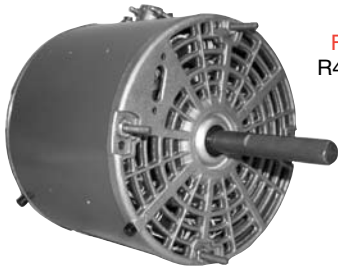


Fig.4  
R42241



Fig.5  
R44587  
R44589

Motors continued from previous

Part #	HP	Amps	Spd/RPM	Rot.	Body	Shaft	Type	Encl.	Bearing	Comment	Fig.
DD-036	1/2	8.20	4/1075	REV.	4.85	6.0"x1/2"	10/370	OPEN	SLEEVE	FML1056, D1732, 3787, X036, 754, R42036, R42219	3
DD-3587	1/2	7.80	3/1075	REV.	5.31	4.5"x1/2"	10/370	OPEN	SLEEVE	DL1056, WG840587, 1865, D701, E205, 3587, X004, 531, R43587	2
R44587	1/2	5.70	4/1075	C.C.W.	5.25	3.4"x1/2"	10/370	OPEN	SLEEVE	OLSEN 27836, 26088	5
R43600	1/2	7.00	4/1075	REV.PLUG	5.00	5.0"x1/2"	10/370	OPEN	SLEEVE	EMERSON K55HXMDA-4122, RHEED RUDD 51-23012-41	1
R42785	1/2	7.40	3/1625	REV.PLUG	5.20	6.5"x1/2"	15/370	OPEN	SLEEVE	FASCO D785, G.E. 3491	2
R42166	1/2	7.40	3/1075	REV.PLUG	5.20	6.5"x1/2"	10/370	OPEN	SLEEVE	FASCO D701,D902, U.E.103,166,531, MARATHON X004	2
R42219	1/2	7.40	3/1075	REV.PLUG	5.20	6.0"x1/2"	10/370	OPEN	SLEEVE	FRANKLIN 80142, G.E. 3787	3
R42036	1/2	8.00	4/1075	REV.PLUG	4.80	4.0"x1/2"	INC	OPEN	SLEEVE	9" OR 10" BOLT CIRCLE C/W 30" LEADS	3
R43587	1/2	9.00	3/1075	REV.	5.06	4.5"x1/2"	10/370	OPEN	SLEEVE	GE 3587	2
R42800	1/2	11.00	4/1050	REV.PLUG	5.80	5.5"x5/8"	15/370	OPEN	BALL	HEIL-QUAKER, KA55FYEPZZ998	2
DD-3589	3/4	10.50	3/1075	REV.	5.61	4.5"x1/2"	15/370	OPEN	SLEEVE	DL1076, WG840589, 8904, D728, E207, 3589, X009, 678, R43589	2
R43602	3/4	9.10	4/1075	REV.	5.00	4.0"x1/2"	10/370	OPEN	BALL	MULTI HP 3/4 - 1/5	1
R42013	3/4	9.80	3/1075	REV.PLUG	5.30	6.0"x1/2"	15/370	OPEN	SLEEVE	G.E.3789	3
R43589	3/4	10.30	3/1075	REV.	5.63	4.5"x1/2"	15/370	OPEN	SLEEVE	GE 3589	2
R44589	3/4	11.00	4/1050	C.C.W.	5.80	3.4"x1/2"	20/370	OPEN	SLEEVE	OLSEN 27161	5
R42016	3/4	11.50	3/1625	REV.PLUG	5.80	6.5"x1/2"	15/370	OPEN	SLEEVE	G.E.3974, 3998, 5KCP39PGE415	2
R42241	3/4	11.50	4/1075	REV.PLUG	7.00	2.9"x1/2"	15/370	OPEN	BALL	HC45SA114, BDP P251-2702, EMERSON K7023, GE S3157	4
R42728	3/4	11.80	3/1075	REV.PLUG	5.30	6.5"x1/2"	15/370	OPEN	SLEEVE	U.E.465, FASCO D728	2
R42812	1	14.00	3/1075	REV.PLUG	5.90	6.5"x1/2"	20/370	OPEN	SLEEVE	GENERAL REPLACEMENT	2

Rotation determined opposite shaft end  
Double shaft determined at lead end

Shaft length measured from hub  
face to shaft end



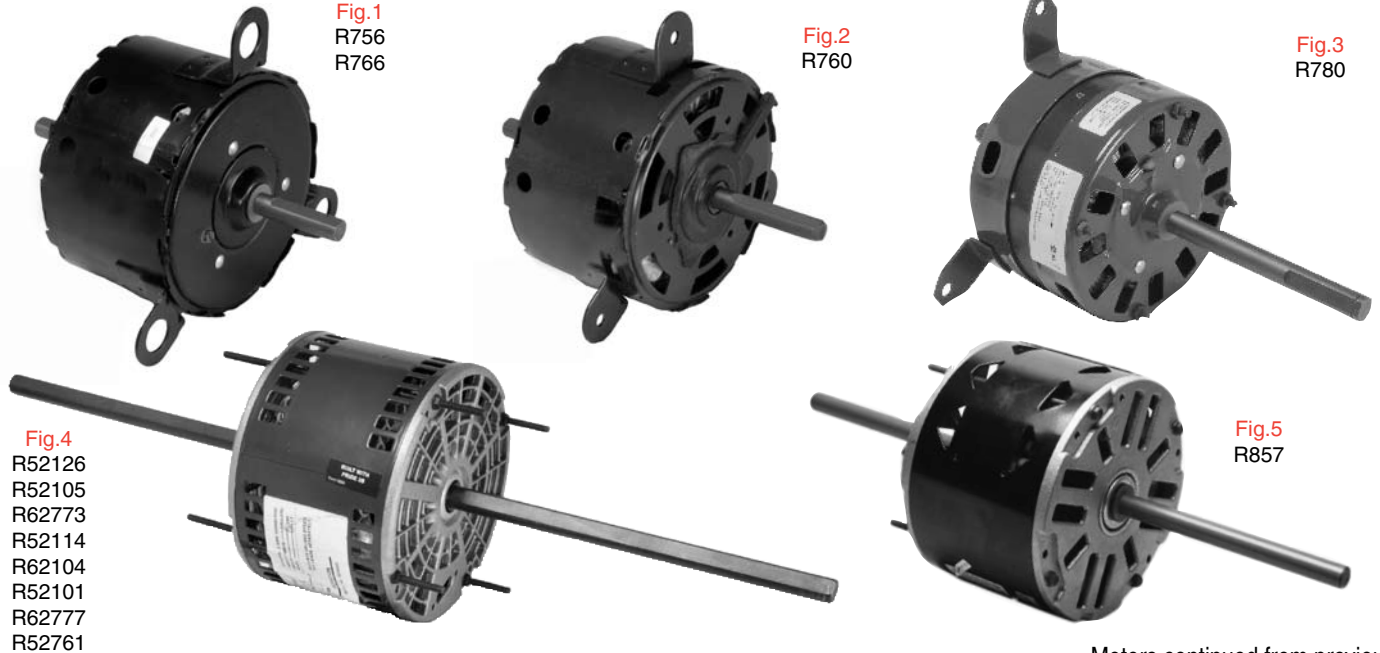
# 5.5" Motors



## Double Shaft - 115 Volts

Sleeve Bearing - PSC - Open & Totally Enclosed

Motors

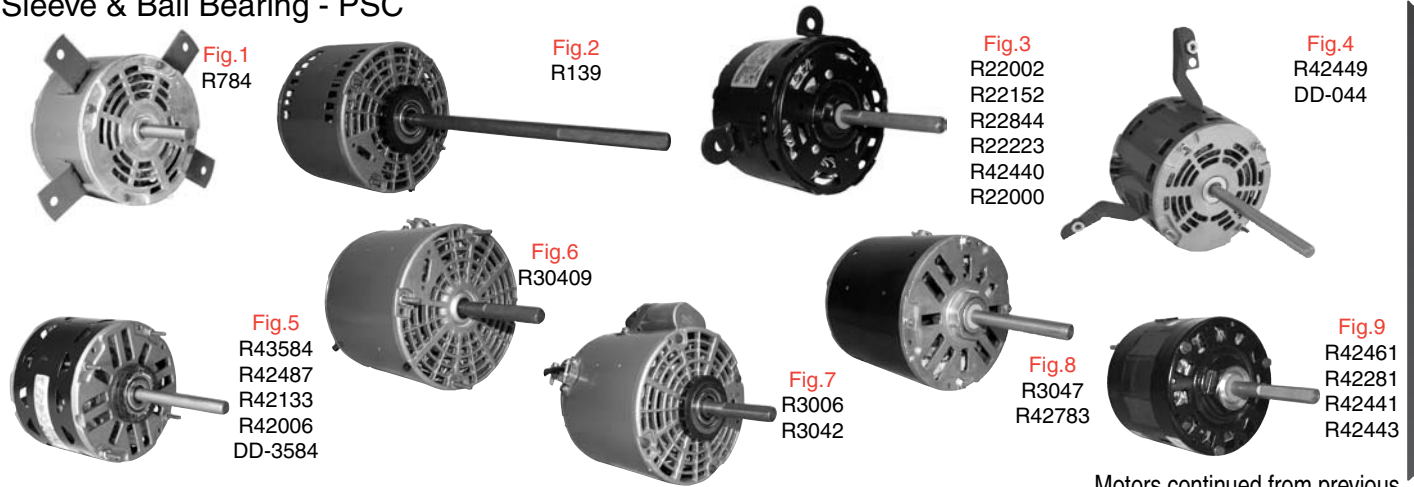


Motors continued from previous

Part #	HP	Amps	Spd/RPM	Rot	Body	Shaft	Cap	Encl.	Bearing	Comment	Fig.
<b>R756</b>	<b>1/12</b>	1.30	3/1080	C.C.W.	3.50	2.0"x1/2"x2.2"	5/370	T.E.	SLEEVE	KEEPRITE 122960, 126063,126212, 90527-1	1
<b>R760</b>	<b>1/8</b>	1.30	3/1100	C.W.	3.60	2.0"x1/2"x2.8"	12.5/370	OPEN	SLEEVE	AIRTEMP 3525153, YORK 24-14098-000	2
<b>R780</b>	<b>1/8</b>	1.70	3/1330	C.W.	3.50	2.4"x1/2"x5.1"	10/370	OPEN	SLEEVE	200423, 71213, 71924, 71925,88452, 88898, 89395, SM711	3
<b>R857</b>	<b>1/8</b>	2.00	3/1100	C.C.W.	3.75	3.0"x1/2"x4.5"	5/370	OPEN	SLEEVE	FASCO D857	5
<b>R52105</b>	<b>1/8</b>	2.40	3/1075	C.C.W.	4.00	7.8"x1/2"x8.5"	5/370	OPEN	SLEEVE	U.E.105, FASCO D751, D765	4
<b>R766</b>	<b>1/6</b>	1.70	3/1225	C.C.W.	4.00	1.9"x1/2"x2.4"	15/370	T.E.	SLEEVE	KEEPRITE 127883, 127965,130142, 130293, 130392,SM718	1
<b>R52126</b>	<b>1/6</b>	3.00	3/1075	C.C.W.	4.00	7.8"x1/2"x8.2"	5/370	OPEN	SLEEVE	U.E.122, 126, 478, WJ94X511	4
<b>R62773</b>	<b>1/4</b>	3.40	3/1625	C.C.W.	4.36	7.9"x1/2"x7.6"	5/370	OPEN	SLEEVE	FASCO D773, D776,CAMCO WJ94X95	4
<b>R52114</b>	<b>1/4</b>	4.80	3/1075	C.C.W.	4.25	7.8"x1/2"x8"	5/370	OPEN	SLEEVE	U.E. 114, 479, FASCO D850,D852	4
<b>R62104</b>	<b>1/3</b>	4.00	3/1625	C.C.W.	4.61	7.3"x1/2"x8.0"	5/370	OPEN	SLEEVE	FRANKLIN 80980, U.E. 104,FASCO D770	4
<b>R52101</b>	<b>1/3</b>	5.00	3/1075	C.C.W.	4.80	7.2"x1/2"x7.9"	5/370	OPEN	SLEEVE	U.E.101, G.E.3681, 3685	4
<b>R62777</b>	<b>1/2</b>	6.00	3/1625	C.C.W.	5.11	7.2"x1/2"x7.6"	5/370	OPEN	SLEEVE	FASCO D777	4
<b>R52761</b>	<b>1/2</b>	9.40	3/1075	C.C.W.	5.50	6.8"x1/2"x7.4"	7.5/370	OPEN	SLEEVE	FRANKLIN 80562, FASCO D761,D883	4

## Single Shaft - 208/230 Volts - Open

Sleeve & Ball Bearing - PSC



Motors continued from previous

Part #	HP	Amps	Spd/RPM	Rot.	Body	Shaft	Cap.	Bearing	Comment	Fig.
<b>R784</b>	<b>1/20</b>	0.40	3/1060		3.50	2.3"x1/2"	4/370	SLEEVE	KEEPRITE 130784	1
<b>R139</b>	<b>1/8</b>	1.00	1/1075	C.W.	4.00	9.0"x1/2"	4/5/370	SLEEVE	FRANKLIN 74007	2
<b>R3006</b>	<b>1/6</b>	1.20	1/1625	C.W.	4.20	1.5"x1/2"	INC.	BALL	GE3006	7
<b>R22002</b>	<b>1/6</b>	1.30	1/1065	C.W.	3.50	3.0"x1/2"	4/370	SLEEVE	AIRTEMP 3775858,CARRIER HC38VE230	3
<b>R22223</b>	<b>1/5</b>	1.30	1/1075	C.C.W.	3.80	2.8"x1/2"	4/370	SLEEVE	CARRIER HC37VE230, FASCO D842, UE 152, <b>230 volt only</b>	3
<b>R22152</b>	<b>1/5</b>	1.30	2/1050	REV.	3.40	4.0"x1/2"	5/440	SLEEVE	CARRIER HC37ML702, U.E. 152,178, 537, FASCO D842	3
<b>R30409</b>	<b>1/5</b>	1.80	1/1550	C.C.W.	4.60	3.0"x1/2"	4/370	SLEEVE	KEEPRITE 120409	6
<b>DD-044</b>	<b>1/4</b>	1.70	4/1075	REV.	3.40	6.0"x1/2"	4/370	SLEEVE	D1733, 3784, M R42449	4
<b>DD-3584</b>	<b>1/4</b>	1.70	3/1075	REV.	4.04	4.5"x1/2"	5/370	SLEEVE	D1026, WG840584, 1971, D725, E202, 3584, X001, 530, R43584	5
<b>R22844</b>	<b>1/4</b>	1.40	1/1625	C.C.W.	3.80	4.0"x1/2"	4/370	SLEEVE	FASCO D844	3
<b>R42449</b>	<b>1/4</b>	1.50	3/1075	REV.PLUG	4.10	6.0"x1/2"	5/370	SLEEVE	INTERTHERM 6207000, 6207010,6207020	4
<b>R3047</b>	<b>1/4</b>	1.50	1/1625	C.W.	4.30	2.5"x1/2"	5/370	SLEEVE	COPELAND 050-0107-01, 0238-00 G.E. 3047, 5KCP39GG3537S	8
<b>R43584</b>	<b>1/4</b>	1.80	3/1075	REV.	4.06	4.5"x1/2"	5/370	SLEEVE	GE 3584	5
<b>R42461</b>	<b>1/4</b>	1.80	3/1625	REV.PLUG	4.50	6.5"x1/2"	5/370	SLEEVE	TRANE WW94X264,265,284,417,U.E. 456	9
<b>R42783</b>	<b>1/4</b>	1.80	1/1625	REV.PLUG	4.50	6.0"x1/2"	5/370	SLEEVE	FASCO D783, S3472, GE 5KCP39DG3334T	8
<b>R3042</b>	<b>1/4</b>	1.90	1/1625	C.C.W.	4.80	2.5"x1/2"	INC.	BALL	S3042, FASCO D870	7
<b>R42133</b>	<b>1/4</b>	1.90	3/1075	REV.PLUG	4.30	6.5"x1/2"	5/370	SLEEVE	U.E. 133, 530, FASCO D725	5
<b>R42006</b>	<b>1/4</b>	2.00	1/1075	REV.PLUG	4.30	4.0"x1/2"	5/370	SLEEVE	FASCO D1749, EMERSON D935,HC39MZ228, UE443,5KCP39EG3314	5
<b>R22000</b>	<b>1/4</b>	2.10	1/1075	C.C.W.	3.80	3.2"x1/2"	5/370	SLEEVE	HC39ME701, SL710, VB230,HC39VE233, VE230,VL208,VL701	3
<b>R42440</b>	<b>1/4</b>	2.20	2/1075	REV.	4.00	4.0"x1/2"	5/440	SLEEVE	U.E. 514, FASCO D843, CARRIER HC39ML702	3
<b>R42281</b>	<b>1/4</b>	2.20	1/1075	C.C.W.	4.30	2.5"x1/2"	4/370	SLEEVE	LENNOX P-8-2702, S3004 FASCO D814, GE 5KCP39GGA124S, <b>230 Volt only</b>	9
<b>R42441</b>	<b>1/4</b>	2.50	1/1050	C.C.W.	4.30	3.9"x1/2"	INC.	SLEEVE	U.E.443, ADDISON 8101-191, BLANCHARD 79002, 79003	9
<b>R42443</b>	<b>1/4</b>	2.70	3/1050	C.C.W.	4.30	3.9"x1/2"	INC.	SLEEVE	CARRIER P251-6407, P257-3984	9

Motors continued next page

Rotation determined opposite shaft end  
Double shaft determined at lead end

Shaft length measured from hub  
face to shaft end

# 5.5" Motors



## Single Shaft - 208/230 Volts - Open

Sleeve & Ball Bearing - PSC

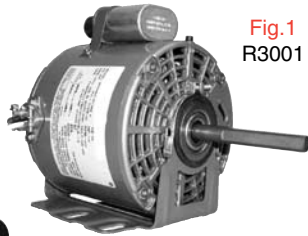


Fig.1  
R3001

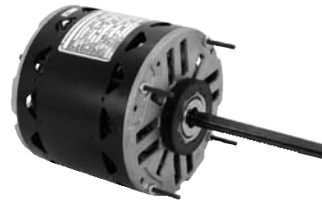


Fig.2  
R42781  
R42132  
R43586  
R32117  
DD-3586



Fig.3  
R22011  
R22012

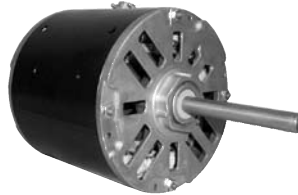


Fig.4  
R3005  
R32011

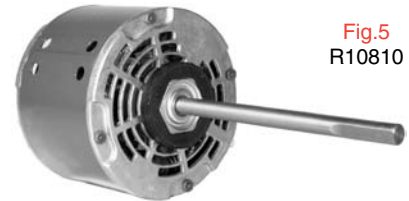


Fig.5  
R10810

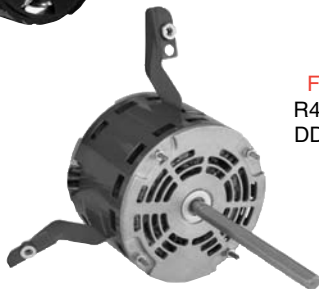


Fig.6  
R42349  
DD-045



Fig.7  
R42237

Motors continued from previous

Part #	HP	Amps	Spd/RPM	Rot.	Body	Shaft	Cap.	Bearing	Comment	Fig.
DD-045	1/3	2.30	4/1075	REV.	4.30	6.0"x1/2"	10/370	SLEEVE	FM1036, D1734, 3786, R42349	6
DD-3586	1/3	2.60	3/1075	REV.	4.28	4.5"x1/2"	5/370	SLEEVE	D1036, WG840586, 1972, D923, E204, 3586,X003, 529, R43586	2
R3001	1/3	1.80	1/1625	C.W.	4.50	3.5"x1/2"	INC.	SLEEVE	HILL PP3955B, G E 3001, 5KCP39KG1369	1
R42781	1/3	2.30	3/1625	REV.PLUG	4.60	6.5"x1/2"	5/370	SLEEVE	U.E.454, FASCO D781, D787	2
R32011	1/3	2.30	3/1625	REV.PLUG	5.30	6.0"x1/2"	5/370	SLEEVE	FASCO D781, 5KCP39HGE214T	4
R3005	1/3	2.40	1/825	C.W.	5.00	3.5"x1/2"	12.5/370	SLEEVE	COPELAND 050-0107-00, 0234-00G.E.3005, 5KCP39PG3224, 915S	4
R22011	1/3	2.50	2/1075	REV.	4.80	4.0"x1/2"	5/370	SLEEVE	YORK 24-12737-000	3
R22012	1/3	2.50	2/1075	REV.	4.00	4.0"x1/2"	5/370	SLEEVE	U.E.536, FASCO D803	3
R10810	1/3	2.70	1/1625	C.W.	4.50	7.5"x1/2"	3/370	SLEEVE	208 Volt only	5
R42132	1/3	3.00	3/1075	REV.PLUG	5.00	6.0"x1/2"	5/370	SLEEVE	FASCO D723,D923, U.E.132, 529, MARATHON X003	2
R43586	1/3	3.10	3/1075	REV.	4.31	4.5"x1/2"	5/370	SLEEVE	GE 3586	2
R42349	1/3	3.70	3/1075	REV.PLUG	4.60	6.0"x1/2"	7.5/370	SLEEVE	GE 3786, CARRIER HC39XE224HC41ME244, HC43ME244	6
R32117	1/3	3.80	1/825	REV.PLUG	5.90	5.3"x1/2"	4/370	SLEEVE	U.E.117, FASCO D2017, D2817, LENNOX P-8-2948, P-8-9080	2
R42237	1/3	4.80	4/1075	REV.PLUG	5.30	6.0"x1/2"	10/440	SLEEVE	CARRIER HC41SE651, HC39SE651BDP P251-5306, P251-5408	7

Motors continued next page

## Single Shaft - 208/230 Volts - Open

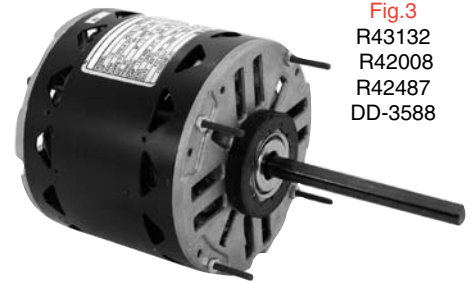
Sleeve & Ball Bearing - PSC



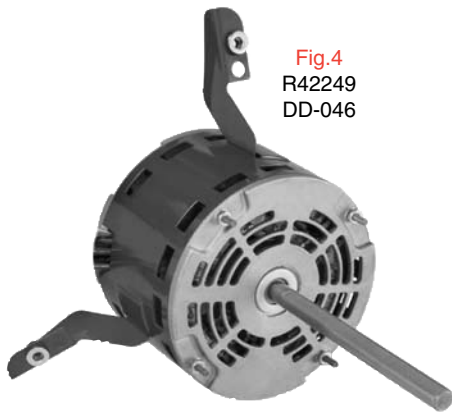
**Fig.1**  
R43601  
R42784



**Fig.2**  
R22017  
R32237  
R32184



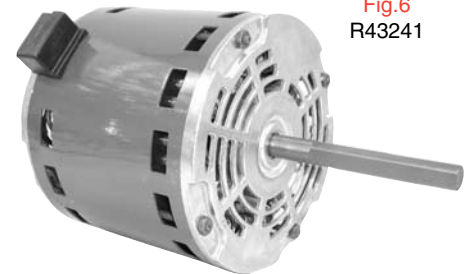
**Fig.3**  
R43132  
R42008  
R42487  
DD-3588



**Fig.4**  
R42249  
DD-046



**Fig.5**  
R32241



**Fig.6**  
R43241

Motors continued from previous

Part #	HP	Amps	Spd/RPM	Rot.	Body	Shaft	Cap.	Bearing	Comment	Fig.
<b>DD-046</b>	<b>1/2</b>	3.80	4/1075	REV.	4.85	6.0"x1/2"	10/370	SLEEVE	FM1056, D1735, 3788, R42449	1
<b>DD-3588</b>	<b>1/2</b>	3.60	3/1075	REV.	5.31	4.5"x1/2"	7.5/370	SLEEVE	D1056, WG840588, 1973, D703, E206, 3588, X005, 528, R43588	3
<b>R42487</b>	<b>1/2</b>	3.40	3/1075	REV.PLUG	5.10	6.5"x1/2"	7.5/370	SLEEVE	FASCO D703, D841, U.E.149, 487, 528, MARATHON X005	3
<b>R42784</b>	<b>1/2</b>	2.80	3/1625	REV.PLUG	5.20	6.5"x1/2"	7.5/370	SLEEVE	U.E.461, FASCO D784	1
<b>R43601</b>	<b>1/2</b>	2.80	4/1075	REV.PLUG	4.60	4.9"x1/2"	5/7.5/ 10/370	SLEEVE	LENNOX 76N18, GE MARS 03464R-R 51-23022-41, EMERSON 5461	1
<b>R32241</b>	<b>1/2</b>	4.00	1/1075	REV.	7.70	4.5"x1/2"	INC.	BALL	DUNHAM BUSH MTR-226, 208/230/460 volts	5
<b>R22017</b>	<b>1/2</b>	4.00	1/1075	C.C.W.	7.40	4.5"x1/2"	7.5/370	SLEEVE	FASCO D804, CARRIER HC44SL230	2
<b>R32237</b>	<b>1/2</b>	4.10	1/825	C.C.W.	5.80	2.7"x1/2"	12.5/370	BALL	ARKLA B14506354, B14506396	2
<b>R43588</b>	<b>1/2</b>	4.30	3/1075	REV.	4.81	4.5"x1/2"	7.5/370	SLEEVE	GE 3588	3
<b>R42008</b>	<b>1/2</b>	4.50	1/1075	REV.PLUG	5.50	4.0"x1/2"	7.5/370	SLEEVE	HC43MZ228, EMERSON K940, U.E. 445, G.E. KCP39NGD123T	3
<b>R42249</b>	<b>1/2</b>	4.90	3/1075	REV.PLUG	5.10	6.0"x1/2"	10/370	SLEEVE	GE 3788	1
<b>R32184</b>	<b>1/2</b>	5.10	3/1075	C.C.W.	5.30	3.5"x1/2"	10/370	SLEEVE	YORK 024-21671-000	3
<b>R43241</b>	<b>1/2</b>	4.40	3/1000	C.C.W.	5.10	3.9"x1/2"	7.5/370	SLEEVE	YORK 024-24106-000	6

Motors continued next page



# 5.5" Motors



## Single Shaft - 208/230 Volts - Open

Sleeve & Ball Bearing - PSC



Fig.1  
R42043

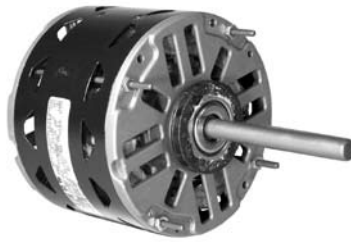


Fig.2  
DD-3590  
R42023  
R42049  
R42211  
R42242  
R42257  
R42786  
R42842  
R43590  
R43603



Fig.3  
R42404  
R42464



Fig.4  
R32058

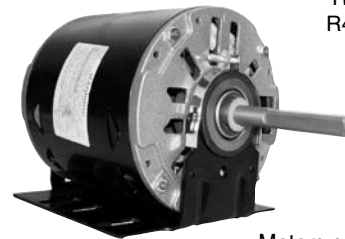


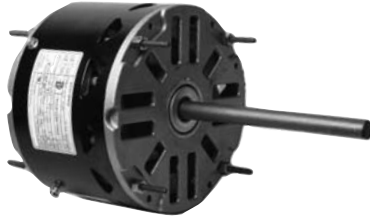
Fig.5  
R3067  
R42141

Motors continued from previous

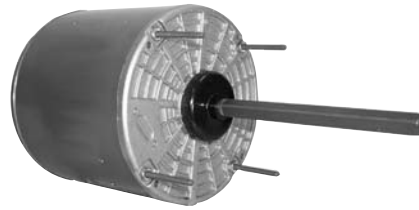
Part #	HP	Amps	Spd/RPM	Rot.	Body	Shaft	Cap.	Bearing	Comment	Fig.
R43603	3/4	3.90	4/1075	REV.	5.00	4.0"x1/2"	10/370	BALL	MULTI HP 3/4 - 1/5	2
DD-3590	3/4	4.60	3/1075	REV.	5.61	4.5"x1/2"	10/370	SLEEVE	D1076, WG840590, 8905, D729, E208, 3590, Z010, 679, R43590	2
R43590	3/4	5.00	3/1075	REV.	5.50	4.5"x1/2"	10/370	SLEEVE	GE 3590	2
R42043	3/4	5.00	3/1075	REV.PLUG	5.30	6.0"x1/2"	10/370	SLEEVE	CARRIER HC43ME241, 242, 243, GE 3790	1
R42404	3/4	5.20	3/1075	C.C.W.	6.00	3.0"x1/2"	7.5/370	BALL	YORK 024-18404	3
R42257	3/4	5.40	4/1075	REV.	5.50	6.0"x1/2"	10/440	SLEEVE	CARRIER HC45SE651, BDP P251-5701, EMERSON K3845	2
R42786	3/4	5.50	3/1625	REV.PLUG	5.60	6.5"x1/2"	7.5/370	SLEEVE	U.E.483, FASCO D786, D789	2
R42049	3/4	5.90	3/1075	REV.PLUG	5.30	6.5"x1/2"	10/370	SLEEVE	U.E.150, 488, FASCO D729, D730 GE 3296, 3990	2
R42842	1	6.50	3/1075	REV.PLUG	5.50	6.5"x1/2"	20/370	SLEEVE	TRANE WW94X249, FASCO D711, ADDISON 8101-439	2
R42023	1	5.30	3/1075	REV.PLUG	7.00	5.0"x1/2"	15/370	BALL	U.E. 586, YORK 024-21672C	2
R42464	1	5.40	3/1075	REV.PLUG	6.50	3.5"x5/8"	12.5/370	BALL	KEEPRITE 504464, MARATHON 48A119746	3
R42242	1	6.20	3/1000	REV.PLUG	7.30	4.0"x5/8"	25/370	BALL	CARRIER HC52AL230, 231, 232, HC52SE208, BDP P251-5101, 5102	2
R42211	1	6.20	2/1625	REV.	6.30	2.5"x1/2"	10/370	BALL	ARMSTRONG, FASCO D825, UE422GE 5KCP35SG644S	2
R32058	1	7.00	3/1100	C.C.W.	7.00	4.0"x1/2"	15/370	BALL	YORK 024-21672C	4
R3067	1	7.10	1/1075	REV.	9.20	3.8"x1/2"	15/370	BALL	HILL PP19162G, GE 3067, 5KCP39PGC910S, 5KCP39PGC030S	5
R42141	1	7.60	1/1075	REV.	8.50	4.0"x1/2"	INC.	BALL	KRAMER DD661, DD791	5

## Single Shaft - 208/230 Volts - Semi-Enclosed

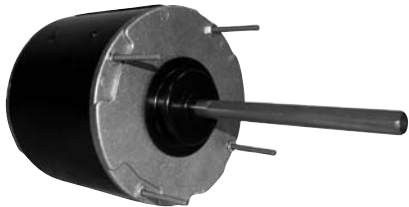
Sleeve & Ball Bearing - PSC



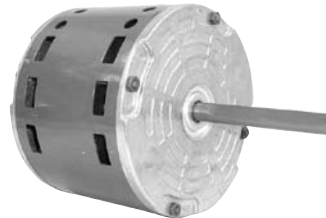
**Fig.1**  
R22719  
R22444



**Fig.2**  
R22242 R32477  
R31672 R32703  
R32097 R32735  
R32739 R32730  
R32475  
R32476



**Fig.3** R22746  
R22474 R22748  
R22475 R32702  
R22532 R32705  
R22745 R32706  
R22648 R22755



**Fig.4**  
R32160

Part #	HP	Amps	RPM	Rot.	Body	Shaft	Cap	Bearing	Comment	Fig.
<b>R22532</b>	<b>1/6</b>	1.10	2/1075	REV.PLUG	3.70	6.5"x1/2"	5/370	SLEEVE	GENERAL REPLACEMENT	3
<b>R22648</b>	<b>1/6</b>	1.30	2/825	REV.PLUG	4.50	6.5"x1/2"	5/370	SLEEVE	KEEPRITE 171318, TRANE WW94X296, YORK 24-21720-000	3
<b>R31672</b>	<b>1/6</b>	1.50	2/1050	C.W.	4.00	3.5"x1/2"	7.5/370	BALL	KEEPRITE 171672, 120240 <i>230 volts only</i>	2
<b>R22719</b>	<b>1/5</b>	1.40	2/1075	REV.PLUG	3.70	5.5"x1/2"	5/370	SLEEVE	U.E.442, FASCO D719	1
<b>R32097</b>	<b>1/4</b>	1.67	2/825	REV.	4.00	6.0"x1/2"	5/370	BALL	GENERAL REPLACEMENT	2
<b>R32702</b>	<b>1/4</b>	1.80	2/1075	REV.	4.60	6.5"x1/2"	5/370	BALL	GENERAL REPLACEMENT	3
<b>R32739</b>	<b>1/4</b>	1.98	2/1075	REV.	4.30	6.5"x1/2"	5/370	BALL	FASCO D739	2
<b>R22474</b>	<b>1/4</b>	1.90	2/825	REV.PLUG	5.10	6.5"x1/2"	7.5/370	SLEEVE	U.E.474	3
<b>R32160</b>	<b>1/4</b>	2.00	2/1075	C.W.	4.30	3.7"x1/2"	5/370	SLEEVE	YORK 024-16076-700	4
<b>R22475</b>	<b>1/3</b>	2.50	2/825	REV.PLUG	5.60	6.5"x1/2"	12.5/370	SLEEVE	U.E.475, FASCO D898	3
<b>R32475</b>	<b>1/3</b>	2.60	2/1075	REV.	4.80	6.5"x1/2"	7.5/370	BALL	F1036, F45SN6V26, 323P199,323P946	2
<b>R32476</b>	<b>1/3</b>	2.60	2/825	REV.	5.30	6.5"x1/2"	7.5/370	BALL	U.E. 476, FASCO D791, MARATHON X086	2
<b>R32703</b>	<b>1/3</b>	2.60	2/1075	REV.	5.10	6.5"x1/2"	7.5/370	BALL	GENERAL REPLACEMENT	2
<b>R22746</b>	<b>1/3</b>	2.60	2/1075	REV.PLUG	4.80	6.5"x1/2"	7.5/370	SLEEVE	U.E.156, FASCO D746	3
<b>R22748</b>	<b>1/3</b>	2.60	2/1075	REV.PLUG	4.30	6.5"x1/2"	5/370	SLEEVE	U.E.397, 501, FASCO D747,D748	3
<b>R22444</b>	<b>1/3</b>	2.80	2/1075	REV.PLUG	4.40	5.5"x1/2"	7.5/370	SLEEVE	RHEEM-RUUD 512068801, 901, 512069001, U.E.444	1
<b>R32477</b>	<b>1/2</b>	3.40	2/825	REV.	5.50	6.5"x1/2"	10/370	BALL	U.E. 477, FASCO D790	2
<b>R32705</b>	<b>1/2</b>	3.60	2/1075	REV.	1.00	6.5"x1/2"	10/370	BALL	GENERAL REPLACEMENT	3
<b>R32735</b>	<b>1/2</b>	4.20	2/1075	REV.	5.10	6.5"x1/2"	10/370	BALL	U.E. 157, FASCO D735	2
<b>R22242</b>	<b>1/2</b>	4.20	2/1075	REV.PLUG	5.10	6.5"x1/2"	10/370	SLEEVE	U.E.499, CARRIER HC43ME230HC43SZ230	2
<b>R22745</b>	<b>1/2</b>	4.40	2/1075	REV.PLUG	4.80	6.5"x1/2"	5/370	SLEEVE	U.E. 445, 502, FASCO D745	3
<b>R32706</b>	<b>3/4</b>	4.20	2/1075	REV.	1.00	6.0"x1/2"	15/370	BALL	GENERAL REPLACEMENT	3
<b>R22755</b>	<b>3/4</b>	5.00	2/1075	REV.PLUG	5.60	6.5"x1/2"	10/370	SLEEVE	F48SQ6L66	3
<b>R32730</b>	<b>3/4</b>	5.10	2/1075	REV.	5.50	6.5"x1/2"	15/370	BALL	MARATHON X085, X090, X095, FASCO D930, U.E. 527	2

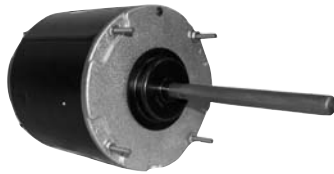
# 5.5" Motors



## Single Shaft - 208/230 Volts - Totally Enclosed

Sleeve & Ball Bearing - PSC

Fig.1

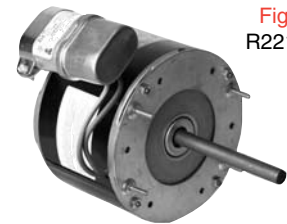


- CF-814 R22465
- CF-3726 R22470
- CF-3732 R22472
- R22019 R22645
- R22170 R22847
- R22184 R31700
- R22401 R31702
- R22402 R32442
- R22450 R32445
- R22455 R32642

Fig.2  
R22576  
R785



Fig.3  
R22180



Part #	HP	Amps	Spd/RPM	Rot.	Body	Shaft	Cap	Bearing	Comment	Fig.
R22465	1/10	0.63	2/825	REV.PLUG	4.10	6.0"x1/2"	5/370	BALL	0321	1
R22576	1/9	1.30	2/1060	C.W.	3.80	1.5"x1/2"	3/370	SLEEVE	KEEPRITE HOTEL ALL SEASON INCREMENTALS 128576	2
R22470	1/8	0.90	2/825	REV.PLUG	4.20	6.0"x1/2"	5/370	BALL	D799-3202	1
R22847	1/8	0.90	2/825	REV.PLUG	4.20	4.8"x1/2"	5/370	SLEEVE	RHEEM RUUD 2076301, 2127601,2127602	1
CF-3726	1/6	1.30	1/1075	REV.	3.94	6.0"x1/2"	5/370	BALL	FSE1016S,SV1, FE1016S, WG840728, 1859, D917, 3727, X411, X427, 184, R31700	1
R785	1/6	0.90	2/1060	C.W.	3.30	2.3"x1/2"	3/370	SLEEVE	KEEPRITE 128577	2
R32642	1/6	1.30	2/1075	REV.PLUG	4.80	6.0"x1/2"	3/370	BALL	U.E.554, FASCO D773, D905, KEEPRITE 120240, 128577	1
R22019	1/6	1.30	2/1075	REV.PLUG	3.80	6.0"x1/2"	5/370	SLEEVE	GENERAL REPLACEMENT	1
R22184	1/6	1.30	2/1075	REV.PLUG	3.80	6.0"x1/2"	5/370	SLEEVE	U.E.136, 184	1
R31700	1/6	1.30	2/1075	REV.PLUG	1.00	6.0"x1/2"	3/370	BALL	GENERAL REPLACEMENT	1
R22472	1/6	1.60	2/825	REV.PLUG	4.10	5.6"x1/2"	5/370	BALL	3203 D793	1
R22645	1/6	1.60	2/825	REV.PLUG	4.40	6.0"x1/2"	5/370	SLEEVE	RHEEM RUUD	1
R22401	1/6	2.00	1/1075	REV.	4.10	6.7"x1/2"	7.5/370	SLEEVE	MULTI HP 1/3 - 1/6	1
R22402	1/6	2.00	1/1075	REV.	4.10	6.7"x1/2"	7.5/370	BALL	MULTI HP 1/3 - 1/6	1
R22170	1/5	1.30	2/1075	C.C.W.	3.70	3.7"x1/2"	3/370	SLEEVE	RHEEM RUUD 512068001,002, 101201,501,512182601,701,801	1
R22180	1/5	1.30	2/1080	C.W.	3.70	4.3"x1/2"	INC.	SLEEVE	FEDDERS S196-179-1, FASCO D882	3
CF-3732	1/4	1.80	1/1075	REV.	4.16	6.5"x1/2"	5/370	BALL	FSE1026S,SV1, FE1026S,SB, WG840728, 1860, 1876, D909, D7909,E221, 3728, 3732,X412, X428,176, R31702	1
CF-814	1/4	1.70	1/825	REV.	5.25	6.5"x1/2"	5/370	BALL	FSE1028S, FE1028S, F1028, 1874, D934, D797, D792, 3040, X450, X097, 175, R31703	1
R31702	1/4	1.80	2/1075	REV.PLUG	4.30	6.0"x1/2"	5/370	BALL	GENERAL REPLACEMENT	1
R32442	1/4	1.80	2/1075	REV.PLUG	4.60	6.0"x1/2"	5/370	BALL	KEEPRITE 121113, 155484, 179656, U.E. 555	1
R22455	1/4	1.80	2/1075	REV.PLUG	4.40	6.0"x1/2"	5/370	SLEEVE	U.E. 176, 188, 455, FASCO D742, D749	1
R32445	1/4	1.90	1/825	REV.PLUG	4.60	6.0"x1/2"	5/370	BALL	GENERAL REPLACEMENT	1
R22445	1/4	1.90	1/825	REV.PLUG	4.90	6.0"x1/2"	7.5/370	SLEEVE	EMERSON K1874, TRANE MOT6039, UE 739, FASCO D797	1
R22749	1/4	1.90	1/1075	REV.PLUG	4.00	6.5"x1/2"	5/370	SLEEVE	323P854, 323P965, F48SF615	1
R22450	1/4	2.50	2/1625	REV.PLUG	4.60	6.0"x1/2"	5/370	SLEEVE	GENERAL REPLACEMENT	1

Motors continued next page

Motors

## Single Shaft - 208/230 Volts - Totally Enclosed

Motors continued from previous

### Sleeve & Ball Bearing - PSC

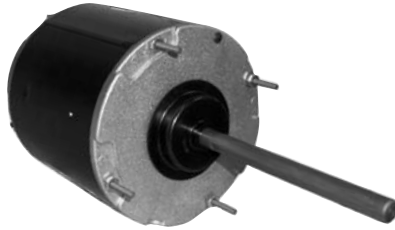


Fig.1

- R22175 R32556
- R22015 R32557
- R31703 R22168
- R31705 R22245
- R22345 CF-3733
- R22016 CF-813
- R22187 CF-3734
- R22460 CF-3735
- R31706

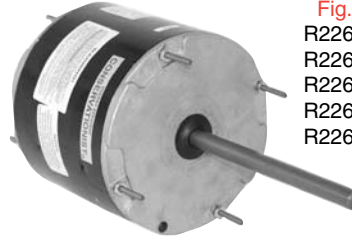


Fig.2

- R22601
- R22602
- R22603
- R22604
- R22605



Fig.3  
R22140

Part #	HP	Amps	Spd/RPM	Rot.	Body	Shaft	Cap	Bearing	Comment	Fig.
R22601	1/3	1.90	2/825	REV.	4.80	5.0"x1/2"	10/370	BALL	MULTI HP 1/3 - 16	2
R22605	1/3	2.80	2/1075	REV.	4.80	6.0"x1/2"	7.5/370	BALL	MULTI HP 1/3 - 1/6	2
CF-3733	1/3	2.80	1/1075	REV.	5.15	6.5"x1/2"	7.5/370	BALL	FSE1036S, SV1, FE1036S, SB, WG840729, 1861, 1877, D908, D7908, 3733, 3729, E222, X413, 175, R31703	1
CF-813	1/3	1.90	1/825	REV.	5.00	6.5"x1/2"	7.5/370	BALL	FSE1038S, FE1038S, F1038, 1875, D936, D796, 791, D3026, X451, X086, 475,740, 467, R22345	1
R22345	1/3	2.40	1/825	REV.PLUG	5.50	6.0"x1/2"	7.5/370	SLEEVE	GENERAL REPLACEMENT	1
R32556	1/3	2.60	2/1075	REV.PLUG	5.10	6.0"x1/2"	7.5/370	BALL	U.E.556, FASCO D731, D737, KEEPRITE 121924, 161585	1
R22175	1/3	2.80	2/1075	REV.PLUG	5.00	6.0"x1/2"	7.5/370	SLEEVE	U.E. 175, 186	1
R22015	1/3	2.80	2/1075	REV.PLUG	4.80	6.0"x1/2"	7.5/370	SLEEVE	TRANE WW94X216, 256, 304, 305,325,WW94X335, 352, 354, 904	1
R31703	1/3	2.80	2/1075	REV.PLUG	5.10	6.0"x1/2"	7.5/370	BALL	GENERAL REPLACEMENT	1
R22603	1/2	2.40	2/825	REV.	4.80	6.0"x1/2"	12.5/370	BALL	MULTI HP 1/2 - 1/5	2
R22245	1/2	3.70	1/825	REV.PLUG	5.60	6.0"x1/2"	10/370	SLEEVE	FSE1058S, F48SR8L3	1
R22602	1/2	3.90	2/1075	REV.	4.80	5.0"x1/2"	12.5/370	BALL	GENERAL REPLACEMENT	2
CF-3734	1/2	3.50	1/1075	REV.	5.58	6.5"x1/2"	10/370	BALL	FSE1056S, SV1, FE1056S,SB, WG840730, 1862, 1878, D907, D7907, E223, 3730, 3734, X414, 187, 5578, R31705	1
R22140	1/2	2.70	2/1090	C.W.	5.00	3.4"x1/2"	7.5/370	SLEEVE	YORK 024-24110-701	3
R31705	1/2	3.50	2/1075	REV.PLUG	1.00	6.0"x1/2"	10/370	BALL	GENERAL REPLACEMENT	1
R22016	1/2	4.00	2/1075	REV.PLUG	5.20	6.0"x1/2"	10/370	SLEEVE	FASCO D717, YORK 24-17420-00024-70797-000, TRANE WW94X303,343	1
R22187	1/2	4.00	2/1075	REV.PLUG	5.20	6.0"x1/2"	10/370	SLEEVE	U.E. 187, FASCO D740	1
R32557	1/2	4.20	2/1075	REV.PLUG	5.50	6.0"x1/2"	10/370	BALL	KEEPRITE 155483, U.E. 557	1
R22460	1/2	4.20	2/1625	REV.PLUG	5.60	6.0"x1/2"	5/370	SLEEVE	GENERAL REPLACEMENT	1
R22604	3/4	5.30	2/1075	REV.	4.80	6.0"x1/2"	15/370	BALL	MULTI HP 3/4 - 1/4	2
CF-3735	3/4	5.10	1/1075	REV.	5.88	6.5"x1/2"	15/370	BALL	FSE1076S,SV1, FE1076, 1868, 1879, D931, 3731, 3735, X095, 779, 668, R31706	1
R31706	3/4	4.70	2/1075	REV.PLUG	5.60	6.5"x1/2"	12.5/370	BALL	GENERAL REPLACEMENT	1
R22168	3/4	5.20	2/1075	REV.PLUG	5.60	6.5"x1/2"	15/370	SLEEVE	GENERAL REPLACEMENT	1

Rotation determined opposite shaft end  
Double shaft determined at lead end

Shaft length measured from hub  
face to shaft end



# 5.5" Motors



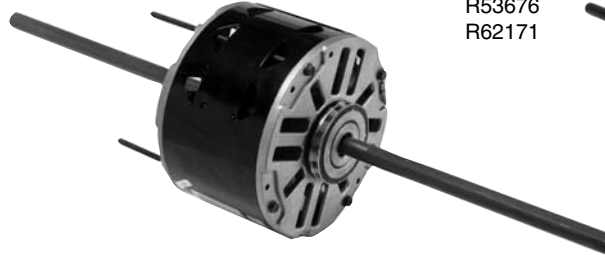
## Double Shaft - 208/230 Volts

Sleeve & Ball Bearing - PSC & Shaded Pole - Open & Totally Enclosed.

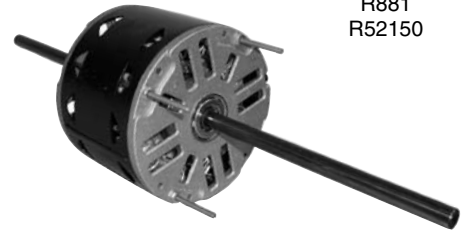
Motors



**Fig.1**  
R52639  
R770  
R52430



**Fig.2**  
R52118  
R52100  
R52113  
R53676  
R62171



**Fig.3**  
R858  
R881  
R52150



**Fig.4**  
R52430



**Fig.5**  
R52170

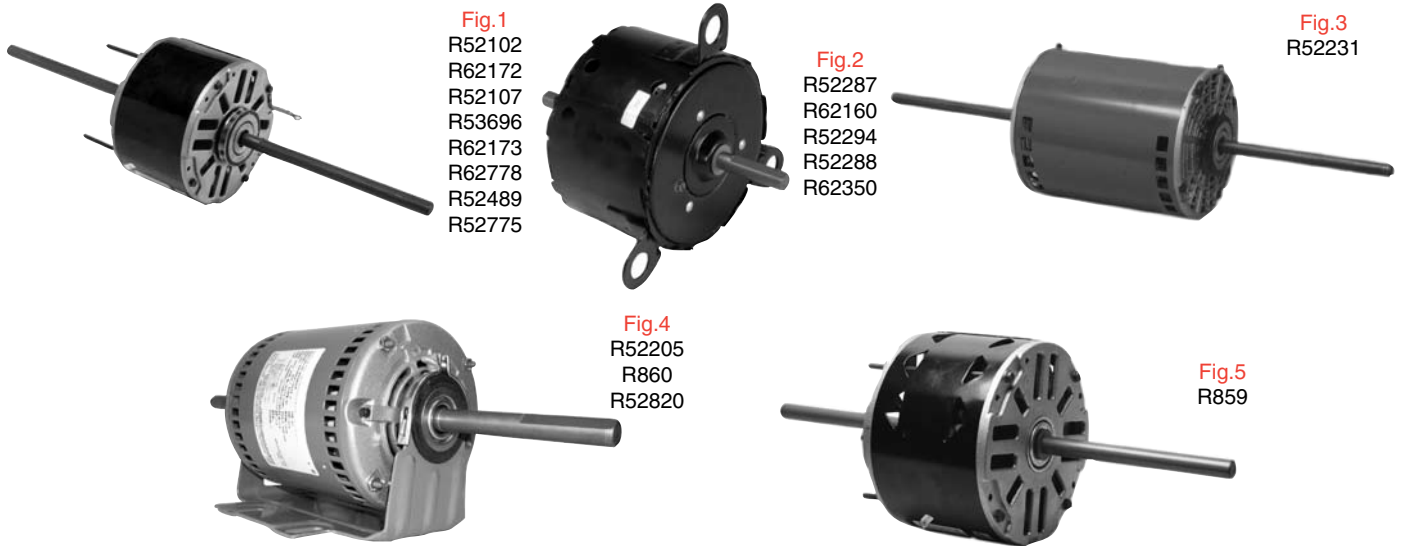
Part #	HP	Amps	Spd/ RPM	Rot	Body	Shaft	Cap	Encl.	Bearing	Comment	Fig.
<b>R52100</b>	<b>1/8</b>	1.00	3/1075	C.C.W.	4.00	7.8"x1/2"x8.5"	5/370	OPEN	SLEEVE	U.E.100, FASCO D750, MARATHON X057, X065	2
<b>R52639</b>	<b>1/6</b>	0.80	5/1075	C.C.W.	4.00	2.5"x1/2"x3.7"	4/370	T.E.	SLEEVE	CARRIER HC37CA230, HC37CA700, HC37CB208	1
<b>R858</b>	<b>1/6</b>	0.90	3/1100	C.C.W.	3.70	3.0"x1/2"x4.3"	5/370	OPEN	SLEEVE	FASCO D858, U.E. 115	3
<b>R52118</b>	<b>1/6</b>	0.95	3/1075	C.C.W.	3.80	8.0"x1/2"x8.2"	5/370	OPEN	SLEEVE	WJ94X504,50,54,47,162, 159,152, U.E.118, 438	2
<b>R770</b>	<b>1/5</b>	1.70	3/1040	C.W.	3.50	2.0"x1/2"x6.2"	3/370	T.E.	SLEEVE	KEEPRITE 128575	1
<b>R52113</b>	<b>1/4</b>	1.50	3/1075	C.C.W.	4.11	7.5"x1/2"x8.0"	5/370	OPEN	SLEEVE	U.E. 113, 439, FASCO D766	2
<b>R52430</b>	<b>1/4</b>	1.50	3/1060	C.W.	4.50	4.1"x1/2"x4.7"	7.5/370	OPEN	SLEEVE	McQUAY 24303	4
<b>R53676</b>	<b>1/4</b>	1.50	3/1075	C.C.W.	4.11	7.5"x1/2"x8.0"	5/370	OPEN	SLEEVE	NO MOUNTING KIT	2
<b>R62171</b>	<b>1/4</b>	1.80	3/1625	C.C.W.	4.30	7.5"x1/2"x8.0"	5/370	OPEN	SLEEVE	FASCO D774, D775, D896, U.E.171, MARATHON X040, X059	2
<b>R52150</b>	<b>1/4</b>	2.00	3/1025	C.W.	4.30	4.5"x1/2"x4.2"	7.5/370	OPEN	SLEEVE	SINGER 02024246	3
<b>R52170</b>	<b>1/4</b>	2.10	1/1725	REV	7.00	5.5"x1/2"x5.5"	SP	O.D.	SLEEVE	CHROMALOX 07589, GE 7J399GX, MARATHON 48S17D1240	5
<b>R881</b>	<b>1/4</b>	2.20	3/1075	C.C.W.	3.87	2.5"x1/2"x4.1"	5/370	OPEN	SLEEVE	FEDDERS S196582, FASCO D881, U.E.180, 181	3

Motors continued next page

## Double Shaft - 208/230 Volts

Motors continued from previous

Sleeve & Ball Bearing - PSC - Open & Totally Enclosed



Motors

Part #	HP	Amps	Spd/ RPM	Rot	Body	Shaft	Cap	Encl.	Bearing	Comment	Fig.
<b>R859</b>	<b>1/3</b>	1.50	3/1100	C.C.W.	3.90	5.5"x1/2"x5.3"	5/370	OPEN	SLEEVE	FASCO D859, U.E. 116	5
<b>R62350</b>	<b>1/3</b>	1.80	5/1075	C.C.W.	4.85	2.4"x1/2"x2.8"	5/370	T.E.	SLEEVE	U.E. 168, FASCO D868	2
<b>R52102</b>	<b>1/3</b>	1.90	3/1075	C.C.W.	4.70	7.2"x1/2"x8.1"	5/370	OPEN	SLEEVE	396P011, 846A800G24, U.E.102, FASCO D1853	1
<b>R62172</b>	<b>1/3</b>	2.50	3/1625	C.C.W.	4.75	7.5"x1/2"x7.8"	5/370	OPEN	SLEEVE	1130033, U.E.110, 172, 399, FASCO D771, D891	1
<b>R52287</b>	<b>1/3</b>	2.90	3/1310	C.W.	4.50	2.4"x1/2"x2.9"	5/370	OPEN	SLEEVE	CHRYSLER, AIRTEMP H32H0007N, FASCO D808	2
<b>R62160</b>	<b>1/3</b>	3.00	3/1365	C.C.W.	4.40	2.9"x1/2"x4.3"	3/370	OPEN	SLEEVE	FASCO D854	2
<b>R52107</b>	<b>1/2</b>	2.70	3/1075	C.C.W.	5.10	7.7"x1/2"x6.2"	7.5/370	OPEN	SLEEVE	U.E. 107,121,468,473,544,FASCO D760,D860,D862,D873	1
<b>R53696</b>	<b>1/2</b>	2.70	3/1075	C.C.W.	5.61	7.7"x1/2"x7.2"	7.5/370	OPEN	SLEEVE	GEN. REPLACEMENT	1
<b>R52294</b>	<b>1/2</b>	3.20	3/1075	C.C.W.	5.00	7.0"x1/2"x2.8"	7.5/370	OPEN	SLEEVE	CARRIER HC43CE230, GE 5KCP39MGB284BS	2
<b>R52288</b>	<b>1/2</b>	3.80	3/1125	C.W.	4.80	4.0"x1/2"x3.0"	5/370	OPEN	SLEEVE	FEDDERS S196-170-6, FASCO D885, NORGE 21-3197	2
<b>R52231</b>	<b>1/2</b>	4.00	2/1075	REV. PLUG	7.00	6.5"x1/2"x6.4"	7.5/370	OPEN	SLEEVE	AMANA, RHEEM, LUXAIRE, MARATHON X231	3
<b>R62173</b>	<b>1/2</b>	4.10	3/1625	C.C.W.	5.25	7x1"/2x7".9"	5/370	OPEN	SLEEVE	FRANKLIN 80491, U.E. 108,173, FASCO D772, D866	1
<b>R52775</b>	<b>1/2</b>	4.30	1/1050	C.W.	5.25	9.3"x1/2"x9.3"	5/370	OPEN	SLEEVE	YORK 24-17775-000	1
<b>R52205</b>	<b>3/4</b>	3.60	1/1075	C.C.W.	8.60	7.0"x5/8"x4.5"	15/370	OPEN	BALL	EMERSON K2328, W.W.G. 3M825,TRANE MOT6291, FEDDERS	4
<b>R62778</b>	<b>3/4</b>	3.80	3/1625	C.C.W.	5.61	7.3"x1/2"x7.1"	7.5/370	OPEN	SLEEVE	FASCO D778	1
<b>R860</b>	<b>3/4</b>	3.90	1/1075	C.C.W.	8.60	7.0"x5/8"x7.0"	15/370	OPEN	BALL	STEVECO S3100, WHIRLPOOL, SEARS	4
<b>R52820</b>	<b>3/4</b>	4.20	3/1075	C.W.	7.80	5.3"x5/8"x4.8"	10/370	O.D.	BALL	LENNOX	4
<b>R52489</b>	<b>3/4</b>	5.40	3/1075	C.C.W.	5.50	6.8"x1/2"x7.5"	7.5/370	OPEN	SLEEVE	U.E. 489, FASCO D763	1

Rotation determined opposite shaft end  
Double shaft determined at lead end

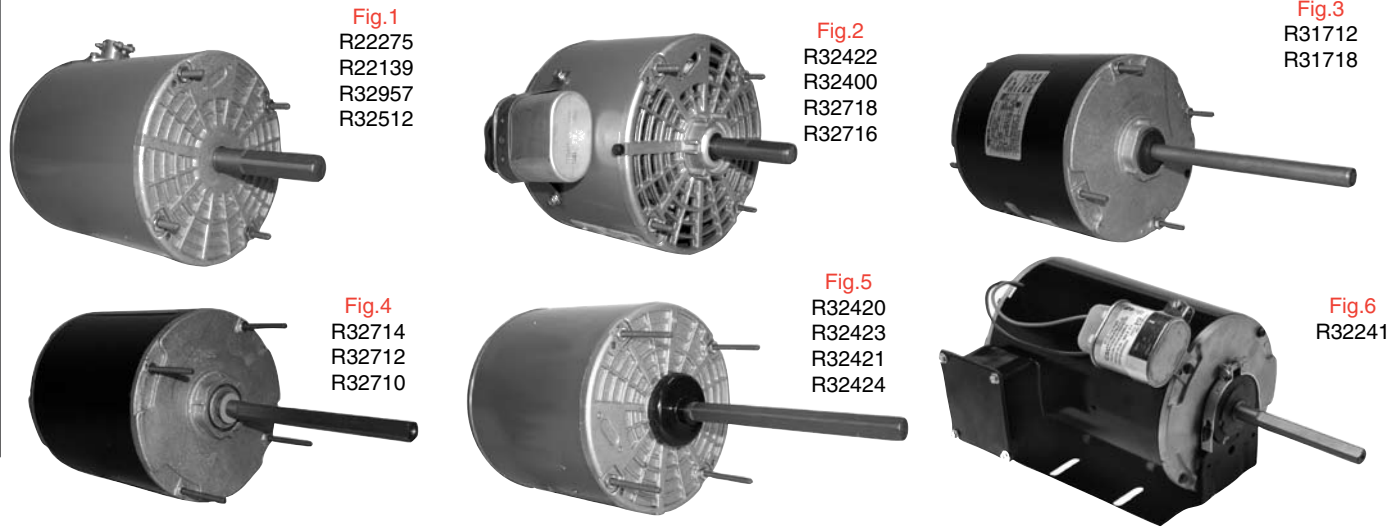
Shaft length measured from hub  
face to shaft end

# 5.5" Motors



## Single Shaft - 460 Volts

Sleeve & Ball Bearing - PSC - Open & Totally Enclose



**Fig.1**  
R22275  
R22139  
R32957  
R32512

**Fig.2**  
R32422  
R32400  
R32718  
R32716

**Fig.3**  
R31712  
R31718

**Fig.4**  
R32714  
R32712  
R32710

**Fig.5**  
R32420  
R32423  
R32421  
R32424

**Fig.6**  
R32241

Part #	HP	Amps	Volt	Spd/RPM	Rot.	Bearing	Body	Shaft	Cap	Encl.	Comment	Fig.
R31710	1/4	0.75	460	1/1075	REV.PLUG	BALL	4.80	6.0"x1/2"	7.5/370	T.E.	CARRIER HC39VE462,HC40GE460, HC41AE460	3
R22275	1/4	0.80	460	1/850	C.W.	SLEEVE	4.80	2.9"x1/2"	5/370	T.E.	YORK 024-27501-000	1
R32420	1/4	1.00	460	1/1625	REV.PLUG	BALL	4.00	6.0"x1/2"	5/370	S.E.	FASCO D918, MARATHON X420	5
R32423	1/4	1.00	460	1/1075	REV.	BALL	4.30	6.0"x1/2"	5.0/370	T.E.	GEN. REPLACEMENT	5
R32710	1/4	1.20	460	2/1625	REV.	BALL	4.40	6.4"x1/2"	5/370	S.E.	TRANE WW94X252,259,263, 418,TFM1864, R4111P517	4
R31712	1/3	0.90	460	1/1075	REV.PLUG	BALL	5.30	6.0"x1/2"	7.5/370	T.E.	CARRIER HC40MB549, EMERSON 6523	3
R32714	1/3	10.00	460	1/825	REV.	BALL	5.60	6.4"x1/2"	10/370	S.E.	GENERAL REPLACEMENT	4
R32712	1/3	1.20	460	2/1075	REV.	BALL	4.70	6.4"x1/2"	7.5/370	S.E.	HC39SE460,GE640, 5001P,5016T24-18412-003, TRANE WW94X410	4
R32421	1/3	1.30	460	1/1625	REV.PLUG	BALL	4.50	6.0"x1/2"	5/370	S.E.	FASCO D916	5
R32424	1/3	1.40	460	1/1075	REV.PLUG	BALL	4.80	6.0"x1/2"	7.5/370	S.E.	FASCO D912MARATHON X424	5
R31718	1/2	1.15	460	1/1050	REV.PLUG	BALL	5.30	3.3"x1/2"	10/370	T.E.	VERTICAL UP	3
R22139	1/2	1.30	460	1/1090	C.W.	SLEEVE	5.00	3.4"x1/2"	7.5/370	T.E.	YORK 024-24110-702	1
R32512	1/2	1.50	460	1/1100	C.C.W.	BALL	8.30	4.8"x1/2"	5/440	OPEN	UE 151015, H3TO27, 02419512, 151015, H3TO27141015	1
R32422	1/2	1.70	460	1/1625	REV.PLUG	BALL	5.00	6.0"x1/2"	7.5/370	S.E.	FASCO D916	2
R32400	1/2	1.80	460	1/1075	REV.	BALL	1.00	6.0"x1/2"	10/370	T.E.	VERTICAL UP	2
R32718	1/2	1.80	460	2/1625	REV.	BALL	5.20	6.4"x1/2"	7.5/370	S.E.	FASCO D916	2
R32716	1/2	1.90	460	2/1075	REV.	BALL	5.50	6.4"x1/2"	10/370	S.E.	U.E.435,CARRIER,YORK, TRANE WW94X315, R4131P516	2
R32957	1/2	2.00	460	1/1075	C.C.W.	BALL	7.50	4.3"x1/2"	5/370	OPEN	YORK 024-183957-00	1
R32241	1/2	4.00	208/230/460	1/1075	REV.	BALL	7.70	4.5"x1/2"	INC.	OPEN	DUNHAM BUSH MTR-226	6

Motors continued next page

[www.rotom.ca](http://www.rotom.ca)

Shaft length measured from hub  
face to shaft end

Rotation determined opposite shaft end  
Double shaft determined at lead end

## Single Shaft - 460 Volts

Motors continued from previous

Sleeve & Ball Bearing - PSC - Open & Totally Enclosed

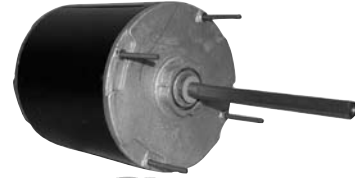


Fig.1

R32720  
R32426  
R31717  
R31716  
R30575  
R34201  
R42606  
R42607



Fig.2

R32671  
R32053  
R42604  
R42605

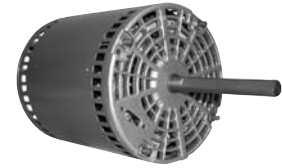


Fig.3

R32051  
R32050



Fig.4  
R43460

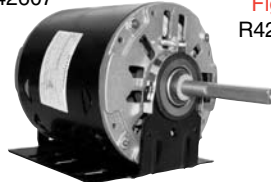


Fig.5  
R42141



Fig.6  
R43520  
R42850



Fig.7

R31065  
R42575

Part #	HP	Amps	Volt	Spd/RPM	Rot.	Bearing	Body	Shaft	Cap	Encl.	Comment	Fig.
R31717	3/4	1.90	460	2/1075	REV.PLUG	BALL	6.10	6.0"x1/2"	10/370	T.E.	ALL ANGLE CARRIER	1
R32671	3/4	2.10	460	3/1050	C.C.W.	BALL	5.30	4.0"x1/2"	12.5/370	OPEN	YORK 024-21671-000	2
R32051	3/4	2.15	460	3/1075	REV.PLUG	BALL	6.63	4.0"x1/2"	15/370	OPEN	YORK, THERMOPLUS, LENNOX, CARRIER	3
R32720	3/4	2.20	460	2/1075	REV.	BALL	5.50	6.4"x1/2"	15/370	S.E.	CARRIER HC45MF460, U.E.158,FASCO D704,	1
R32426	3/4	2.20	460	1/1075	REV.	BALL	5.50	4.5"x5/8"	7.5/370	OPEN	VERTICAL UP	1
R31716	3/4	2.50	460	1/1075	REV.PLUG	BALL	6.10	6.0"x1/2"	10/370	T.E.	FASCO D1914, MARATHON X099	1
R43520	3/4	2.00	460	3/1075	C.C.W	BALL	6.00	2.5"x1/2"	20/370	OPEN	LENNOX 43G5201	6
R43460	1	2.50	460	3/1100	C.C.W.	BALL	6.50	4.0"x1/2"	25/370	OPEN	YORK 0242500001	4
R32053	1	3.00	460	3/1100	C.C.W.	BALL	7.00	4.0"x1/2"	25/370	OPEN	YORK 024-25000D004-001	2
R42850	1	3.20	460	3/1100	REV.PLUG	BALL	6.10	4.5"x1/2"	15/370	OPEN	GENERAL REPLACEMENT	6
R42141	1	7.60	208/230/460	1/1075	REV.	BALL	8.50	4.0"x1/2"	INC.	OPEN	KRAMER DD661, DD791	5

## Single Shaft 575 Volts

Part #	HP	Amps	Volt	Spd/RPM	Rot.	Bearing	Body	Shaft	Cap	Encl.	Comment	Fig.
R30575	1/6	0.50	575	1/1625	REV.	SLEEVE	4.50	2.2"x1/2"	INC.	OPEN	MARATHON A48170246A,HUSSMAN 077228, CMS 30575	1
R34201	1/5	0.50	575	1/1075	C.W.	SLEEVE	4.50	2.5"x1/2"	INC.	OPEN	UE HA3J010, HA3J036, HUSSMAN 204201, CMS 30125	1
R31065	1/4	0.50	575	1/1140	REV.	BALL	6.30	2.8"x5/8"	-	T.E.	KEEPRITE 171065, U.E. HM3G004K	7
R42604	1/3	1.50	575	1/1100	REV.PLUG	BALL	5.80	6.0"x1/2"	7.5/440	T.E.	TRANE MOT2604, LENNOX 25G20	2
R42605	1/2	1.00	575	1/1625	REV.PLUG	BALL	5.60	6.0"x1/2"	7.5/440	T.E.	TRANE M02605, CENTURY 173329MAGNETEK HF2J043	2
R42575	1/2	1.80	575	1/1140	REV.	BALL	7.90	2.5"x1/2"	7.5/440	S.E.	CARRIER HD44ML461,AO SMITH P48J6A2	7
R42606	1/2	1.20	575	1/1100	REV.PLUG	BALL	5.50	6.0"x1/2"	7.5/370	T.E.	TRANE, COMFORTAIRE	1
R32050	3/4	1.65	575	3/1024	REV.PLUG	BALL	6.50	4.0"x1/2"	15/370	OPEN	YORK, THERMOPLUS, LENNOX, CARRIER	3
R42607	3/4	1.90	575	1/1075	REV.PLUG	BALL	6.00	6.0"x1/2"	15/370	T.E.	CENTURY HM3T071, TRANE,MOT2607, MARATHON 48A11T566	1

Rotation determined opposite shaft end  
Double shaft determined at lead end

Shaft length measured from hub  
face to shaft end