

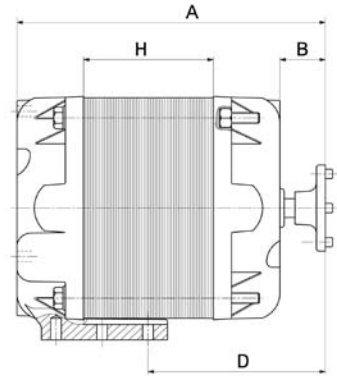
Totally Enclosed - Shaded Pole - 115, 230 Volts

Features

- Shaded pole
- 4 Pole
- Totally Enclosed
- 50/60 Hz
- Long Life Lubricated Sintec Sleeve-Bearings
- Duty: Continuous Air-over. Operation: All Angle
- Rotation: CW Opposite Shaft End
- Cord: 21"/23" Lead Length With #10 Ring Studs
- Mounting: 1 Foot, Front Shroud, Tapped Rear 3-Hole
- Included: Nuts, Screws & Fan Blade Adapter



SLEEVE BEARING



ELCO Motors

Part #	Watts	HP	RPM	Volts	Amps	Prot.	Dimensions: mm (")			
							H	A	B	D
EC-4W115	4	1/185	1550	115	0.36	Imp.	13 (.51")	71.5 (2.82")	12.5 (.49")	42 (1.65")
EC-4W230		1/185	1550	230	0.18	Imp.	13 (.51")	71.5 (2.82")	12.5 (.49")	42 (1.65")
EC-5W115	5	1/150	1550	115	0.40	TH.	13 (.51")	71.5 (2.82")	12.5 (.49")	42 (1.65")
EC-5W230		1/150	1550	230	0.20	TH.	13 (.51")	71.5 (2.82")	12.5 (.49")	42 (1.65")
EC-6W115	6	1/125	1550	115	0.41	Imp.	20 (.79")	77.5 (3.05")	12.5 (.49")	48 (1.89")
EC-6W230		1/125	1550	230	0.20	Imp.	20 (.79")	77.5 (3.05")	12.5 (.49")	48 (1.89")
EC-9W115	9	1/83	1550	115	0.58	TH.	20 (.79")	77.5 (3.05")	12.5 (.49")	48 (1.89")
EC-9W230		1/83	1550	230	0.35	TH.	20 (.79")	77.5 (3.05")	12.5 (.49")	48 (1.89")
EC-16W115	16	1/47	1550	115	1.0	TH.	30 (1.18")	91.5 (3.6")	16 (.63")	62 (2.44")
EC-16W230		1/47	1550	230	0.5	TH.	30 (1.18")	91.5 (3.6")	16 (.63")	62 (2.44")
EC-25W115	25	1/30	1550	115	1.5	TH.	45 (1.77")	106.5 (4.19")	15.5 (.61")	61 (2.4")
EC-25W230		1/30	1550	230	0.75	TH.	45 (1.77")	106.5 (4.19")	15.5 (.61")	61 (2.4")
EC-34W115	34	1/20	1550	115	1.6	TH.	45 (1.77")	106.5 (4.19")	15.5 (.61")	61 (2.4")
EC-34W230		1/20	1550	230	0.8	TH.	45 (1.77")	106.5 (4.19")	15.5 (.61")	61 (2.4")

ELCO Fan Blades

Part #	Motor	Diameter: mm (")	Pitch	Blades	Application	Construction
EC-4VEA012	4 & 5 W	154 (6.06")	28°	5	Suction	Plastic
EC-4012309		154 (6.06")	19°	5	Suction	Aluminum
EC-4012543		172 (6.77")	28°	5	Blower	Aluminum
EC-4VEA009	6 & 9 W	200 (7.87")	28°	5	Suction	Plastic
EC-4VEA010		200 (7.87")	34°	5	Suction	Plastic
EC-4VEA013		9 W	230 (9.05")	25°	5	Suction
EC-4VEA006	16 W	230 (9.05")	31°	5	Suction	Plastic
EC-4VEA007		254 (10.0")	28°	5	Suction	Plastic

ELCO Fan Guards

Notes: Imp. = Impedance. - TH. = Thermal Protection

Part #	Description
EC-1055223	Plastic, 7.87" Dia.
EC-1055224	Plastic, 10" Dia.
EC-1055318	Metal, 9.05" Dia
EC-1055303	Metal, 10" Dia.

ELCO Brackets

Part #	Description
EC-EUBKT01	Bracket for US style Elco Motors

Rotation determined opposite shaft end
Double shaft determined at lead end

Shaft length measured from hub
face to shaft end